



HAL
open science

neXtSIM: a new Lagrangian sea ice model

Pierre Rampal, Sylvain Bouillon, Einar Ólason, Mathieu Morlighem

► **To cite this version:**

Pierre Rampal, Sylvain Bouillon, Einar Ólason, Mathieu Morlighem. neXtSIM: a new Lagrangian sea ice model. *The Cryosphere*, 2016, 10 (3), pp.1055 - 1073. 10.5194/tc-10-1055-2016 . hal-03405818

HAL Id: hal-03405818

<https://hal.univ-grenoble-alpes.fr/hal-03405818>

Submitted on 27 Oct 2021

HAL is a multi-disciplinary open access archive for the deposit and dissemination of scientific research documents, whether they are published or not. The documents may come from teaching and research institutions in France or abroad, or from public or private research centers.

L'archive ouverte pluridisciplinaire **HAL**, est destinée au dépôt et à la diffusion de documents scientifiques de niveau recherche, publiés ou non, émanant des établissements d'enseignement et de recherche français ou étrangers, des laboratoires publics ou privés.



neXtSIM: a new Lagrangian sea ice model

Pierre Rampal¹, Sylvain Bouillon¹, Einar Ólason¹, and Mathieu Morlighem²

¹Nansen Environmental and Remote Sensing Center and Bjerknes Centre for Climate Research, Bergen, Norway

²Department of Earth System Science, University of California, Irvine, California, USA

Correspondence to: Pierre Rampal (pierre.rampal@nersc.no)

Received: 18 September 2015 – Published in The Cryosphere Discuss.: 30 October 2015

Revised: 22 April 2016 – Accepted: 3 May 2016 – Published: 20 May 2016

Abstract. The Arctic sea ice cover has changed drastically over the last decades. Associated with these changes is a shift in dynamical regime seen by an increase of extreme fracturing events and an acceleration of sea ice drift. The highly non-linear dynamical response of sea ice to external forcing makes modelling these changes and the future evolution of Arctic sea ice a challenge for current models. It is, however, increasingly important that this challenge be better met, both because of the important role of sea ice in the climate system and because of the steady increase of industrial operations in the Arctic. In this paper we present a new dynamical/thermodynamical sea ice model called neXtSIM that is designed to address this challenge. neXtSIM is a continuous and fully Lagrangian model, whose momentum equation is discretised with the finite-element method. In this model, sea ice physics are driven by the combination of two core components: a model for sea ice dynamics built on a mechanical framework using an elasto-brittle rheology, and a model for sea ice thermodynamics providing damage healing for the mechanical framework. The evaluation of the model performance for the Arctic is presented for the period September 2007 to October 2008 and shows that observed multi-scale statistical properties of sea ice drift and deformation are well captured as well as the seasonal cycles of ice volume, area, and extent. These results show that neXtSIM is an appropriate tool for simulating sea ice over a wide range of spatial and temporal scales.

1 Introduction

Sea ice dynamics are very complex and share many characteristics with earth crust dynamics, such as dynamical triggering and clustering of deformation events or earth/ice quakes. Both sea ice and the earth's crust are geophysical solids that can be viewed from the mechanical point of view as two-dimensional plates due to their very small geometrical aspect ratio ($\mathcal{O}(10^{-6})$). These plates then experience planar internal stresses under the action of winds and ocean currents in the case of sea ice and magmatic currents of the mantle in case of the earth's crust. Similarly to earth crust dynamics, sea ice dynamics are controlled by processes interacting and evolving over a wide range of spatial and temporal scales. Mechanical processes like fracturing and faulting are important as they both drive large-scale sea ice drift and deformation patterns (e.g. Weiss et al., 2009). These processes are the expression of the mechanical damage of the ice pack which, as a result, may look more like an assembly of plates ($> \mathcal{O}(1\text{ km})$) and floes ($< \mathcal{O}(100\text{ m})$) than an intact solid plate. In addition to the damaging processes the formation of new ice is also important. Indeed, new ice formed in fractures and leads can fuse together broken ice and thus contribute to an effective mechanical strength recovery, or “healing”. The observed complex dynamical behaviour of the sea ice cover therefore emerges from the interplay of these dynamical and thermodynamical processes (see for example Korsnes et al., 2004). As an example of this complexity, recent studies showed that the statistical properties of sea ice deformation are characterised by a coupled space–time scaling invariance (Marsan et al., 2004; Rampal et al., 2008), similar to what is observed for earthquakes (e.g. Kagan, 1991; Kagan and Jackson, 1991; Marsan and Weiss, 2010), and which is a fingerprint of the presence of long-range elastic interactions within

the ice cover. In this paper we present a new general sea ice model, called neXtSIM, which has been recently developed and designed to correctly capture this complexity.

Coon et al. (1974) introduced the first realistic dynamical sea ice model, based on observations from the Arctic Ice Dynamics Joint Experiment (AIDJEX). In their model, sea ice was described primarily as a plastic material that deforms irreversibly once a critical internal stress state is reached. When the stress is subcritical, however, the ice is modelled as an elastic material that deforms under stress, but returns back to its original shape when the stress is removed. Hibler (1979) replaced the elastic response of the AIDJEX model by a viscous one, producing the viscous-plastic model (VP). This made his model easier to solve numerically and easier to couple to ocean general circulation models. Hunke and Dukowicz (1997) suggested adding an elastic term to the VP model of Hibler (1979), producing the elastic-viscous-plastic model (EVP). This modification was based purely on numerical considerations, making the model easier to parallelise, but offers no additional physical insights. Virtually all modern sea ice models use either the VP or EVP formulation, combined with a thermodynamics model (e.g. Semtner, 1976; Bitz and Lipscomb, 1999; Vancoppenolle et al., 2009; Turner and Hunke, 2015) and variously detailed sub-grid-scale parameterisations (for commonly used large-scale sea ice models as for instance CICE (Hunke et al., 2015), LIM3 (Vancoppenolle et al., 2009), MITgcm (Adcroft et al., 2016) or MPI-ESM (Notz et al., 2013)).

There has recently been renewed interest in further development of various aspects of dynamical sea ice models. This includes research on developing different solvers for the standard VP/EVP rheology (e.g. Lemieux et al., 2010; Kimmritz et al., 2015), different rheologies (e.g. Tremblay and Mysak, 1997; Hopkins, 2004; Schreyer et al., 2006; Wilchinsky and Feltham, 2006; Sulsky et al., 2007; Girard et al., 2011; Tsamados et al., 2013; Herman, 2016; Rabatel et al., 2015; Dansereau et al., 2016), and wind and/or ocean drag parameterisations (e.g. Lu et al., 2011; Lüpkes et al., 2012; Tsamados et al., 2014). These developments still need to be further evaluated regarding their contribution to better reproduce the complexity of sea ice dynamics mentioned earlier, in realistic set-ups.

One of the reasons to redesign or replace the VP and EVP rheologies is that classical models give a poor representation of ice drift and deformation statistics and scaling, compared with satellite observations (Girard et al., 2009). Girard et al. (2011) introduced the elasto-brittle rheology and showed that this has the potential to accurately reproduce the aforementioned statistics and scaling.

Bouillon and Rampal (2015b) then introduced the dynamical core of the new sea ice model presented in this paper, using the elasto-brittle rheology. In their paper they described a preliminary stand-alone version of the model used to simulate the sea-ice-damaging process and the associated ice cover deformation over short timescales (up to 10 days),

while neglecting the thermodynamical processes and feedbacks (e.g. on the sea ice mechanical strength). This sea ice model was capable of reproducing one of the complex aforementioned characteristics of sea ice dynamics, i.e. the multi-fractal spatial scaling of sea ice deformation, revealed by satellite observations analysis and reported for the first time in Marsan et al. (2004).

The main goal of the neXtSIM development is to reproduce the mechanical behaviour and state of the Arctic sea ice cover on seasonal timescales (over 1 year in this paper). In particular, we wish to simulate realistic sea ice drift and deformation statistics and annual cycle, as well as sea ice volume and extent seasonal cycles. Addressing such a temporal scale required some developments from the first simplified version of neXtSIM presented in Bouillon and Rampal (2015b), such as an adapted rheological framework to take care of post-damage sea ice motion and permanent deformation, and a thermodynamical model capable of producing the necessary feedback on the sea ice mechanical behaviour over a seasonal timescale.

This paper presents the first comprehensive version of the neXtSIM model, a fully Lagrangian dynamical/thermodynamical sea ice model. A generic presentation of the model is made in Sect. 2. The remeshing/remapping scheme is described in Sect. 2.4. The model set-up, tuning of parameters, and evaluation of the model performance are described in Sect. 3. Section 4 presents the summary and conclusion.

2 Model description

The sea ice variables used in neXtSIM are the following: h and h_s are the effective sea ice and snow thickness respectively; A is the sea ice concentration; d is the sea ice damage; \mathbf{u} is the horizontal sea ice velocity vector; and $\boldsymbol{\sigma}$ is the ice internal stress tensor. These variables are listed in Table 1. The model has two ice thickness categories: ice and open water. As in Bouillon and Rampal (2015b), scalar and tensorial variables are defined at the centre of the elements of the mesh, whereas vectors are defined at the vertices.

2.1 Evolution equations

The evolution equations for h , h_s , and A (here denoted ϕ) have the following generic form:

$$\frac{D\phi}{Dt} = -\phi \nabla \cdot \mathbf{u} + S_\phi, \quad (1)$$

where $\frac{D\phi}{Dt}$ is the material derivative of ϕ , $\nabla \cdot \mathbf{u}$ is the divergence of the horizontal velocity, and S_ϕ is a thermodynamical sink/source term. The actual form of S_h , S_A , and S_{h_s} are defined in Sect. 2.3. An additional constraint for the concentration is that $A \leq 1$.

Table 1. List of variables used in neXtSIM.

Symbol	Name	Meaning	Unit
h	sea ice thickness	volume of ice per unit area	m
h_s	snow thickness	volume of snow per unit area	m
A	sea ice concentration	surface of ice per unit area	–
d	sea ice damage	0 denotes undamaged, 1 denotes completely damaged ice	–
\mathbf{u}	sea ice velocity	horizontal sea ice velocity	m s^{-1}
$\boldsymbol{\sigma}$	sea ice internal stress	planar internal stress	Nm^{-2}

The evolution of d is given by

$$\frac{Dd}{Dt} = \frac{\Delta d}{\Delta t} + S_d, \quad (2)$$

where Δd is the damage source term (defined below) and S_d is a thermodynamical sink term (defined in Sect. 2.3). The damage is an ice volume tracer and is equal to 0 for newly formed ice. When new ice is formed, the new damage is decreased and calculated as a volume-weighted average over the old and new ice, meaning that the sea ice partly recovers its mechanical strength.

The evolution of sea ice velocity derives from the vertically integrated sea ice momentum equation:

$$m \frac{D\mathbf{u}}{Dt} = \nabla \cdot (\boldsymbol{\sigma} h) - \nabla P + \boldsymbol{\tau}_a + \boldsymbol{\tau}_w + \boldsymbol{\tau}_b - m f \mathbf{k} \times \mathbf{u} - m g \nabla \eta, \quad (3)$$

where m is the inertial mass, P is a pressure term, $\boldsymbol{\tau}_a$ is the surface wind (air) stress, $\boldsymbol{\tau}_w$ is the ocean (water) stress and $\boldsymbol{\tau}_b$ is the basal stress in case of grounded ice. All these terms are defined in Sect. 2.2. The other symbols in Eq. (3) are f , the Coriolis parameter; \mathbf{k} , the upward pointing unit vector; g , the gravity acceleration; η , the ocean surface elevation; and $\boldsymbol{\sigma}$, the internal stress tensor.

The evolution of the internal stress is computed as in Bouillon and Rampal (2015b) in two steps that correspond to

$$\frac{D\boldsymbol{\sigma}}{Dt} = \frac{\boldsymbol{\sigma}^{(n+1)} - \boldsymbol{\sigma}'}{\Delta t} + \frac{\boldsymbol{\sigma}' - \boldsymbol{\sigma}^{(n)}}{\Delta t}, \quad (4)$$

where superscripts n and $n + 1$ correspond to the previous and current time steps, respectively. The first step accounts for the elastic deformation without considering the damaging process and gives a first estimate of the internal stress, $\boldsymbol{\sigma}'$, by

$$\begin{bmatrix} \sigma'_{11} - \sigma^{(n)}_{11} \\ \sigma'_{22} - \sigma^{(n)}_{22} \\ \sigma'_{12} - \sigma^{(n)}_{12} \end{bmatrix} = \frac{E(A, d)}{(1 - \nu^2)} \begin{bmatrix} 1 & \nu & 0 \\ \nu & 1 & 0 \\ 0 & 0 & \frac{1 - \nu}{2} \end{bmatrix} \begin{bmatrix} \dot{\epsilon}_{11} \\ \dot{\epsilon}_{22} \\ 2\dot{\epsilon}_{12} \end{bmatrix} \Delta t, \quad (5)$$

where $E(A, d)$ is the effective elastic stiffness, ν is Poisson's ratio, and $\dot{\boldsymbol{\epsilon}}$ is the strain rate tensor defined by $\dot{\boldsymbol{\epsilon}} =$

$\frac{1}{2} (\nabla \mathbf{u} + (\nabla \mathbf{u})^T)$. The effective elastic stiffness is parameterised as

$$E(A, d) = Y f(A) (1 - d), \quad (6)$$

where Y is the sea ice elastic modulus (Young's modulus) and $f(A)$ is a decreasing function of A parameterising the effect of the compactness (defined in Sect. 2.2). The second step accounts for the damaging process. With this estimate of the internal stress, the failure criteria are checked. For the elements where the estimated internal stress $\boldsymbol{\sigma}'$ falls outside the failure envelope (defined in Sect. 2.2), the damage factor Ψ is set to the value for which the stress state,

$$\boldsymbol{\sigma}^{(n+1)} = \Psi \boldsymbol{\sigma}', \quad (7)$$

is scaled back onto the failure envelope. For the elements for which the estimated internal stress $\boldsymbol{\sigma}'$ is inside the failure envelope, Ψ is simply set to 1. The damage source term Δd corresponding to the decrease of $\boldsymbol{\sigma}$ has been derived in Bouillon and Rampal (2015b) as

$$\Delta d = (1 - \Psi) (1 - d^{(n)}). \quad (8)$$

2.2 Dynamical component

In this subsection, we detail each term of the sea ice momentum equation (Eq. 3) and the underlying parameterisations.

The inertial mass m depends on the assumption made about the motion of the water present in leads: either the water in the leads moves as the ocean below or as the ice around it (Connolley et al., 2004). We choose the second hypothesis for our model, as we think it is more relevant for high-resolution models and when the rheology allows for sharp transitions of sea ice concentration within the ice cover. Using this approach, the inertial mass m corresponds to the mass of ice and snow plus the mass of the water in the leads as $m = \rho_i h + \rho_s h_s + \rho_w h_w$, where ρ_w is the reference density of seawater and h_w is the volume of water from the base of the ice to the sea surface per unit area. By isostasy, $\frac{\rho_w h_w}{(1-A)} = \frac{\rho_i h + \rho_s h_s}{A}$, and m is then given by

$$m = \frac{\rho_i h + \rho_s h_s}{A}. \quad (9)$$

The failure envelope is defined as in Weiss et al. (2007) in terms of the principal stress components σ_1 and σ_2 defined

by

$$\sigma_1 = -\frac{\sigma_{11} + \sigma_{22}}{2} + \sqrt{\left(\frac{\sigma_{11} - \sigma_{22}}{2}\right)^2 + \sigma_{12}^2} \quad (10)$$

$$\sigma_2 = -\frac{\sigma_{11} + \sigma_{22}}{2} - \sqrt{\left(\frac{\sigma_{11} - \sigma_{22}}{2}\right)^2 + \sigma_{12}^2} \quad (11)$$

respectively, following the convention that compressive stresses are positive. The envelope represents a combination of a Mohr–Coulomb criterion, a tensile stress criterion, and a compressive stress criterion, defined by

$$\sigma_1 \leq q\sigma_2 + \sigma_c \quad (\text{Mohr–Coulomb criterion}), \quad (12)$$

$$\frac{\sigma_1 + \sigma_2}{2} \geq \sigma_{N \min} \quad (\text{tensile stress criterion}), \quad (13)$$

$$\frac{\sigma_1 + \sigma_2}{2} \leq \sigma_{N \max} \quad (\text{compressive stress criterion}), \quad (14)$$

where q and σ_c are defined as in Weiss and Schulson (2009) by

$$q = \left[\left(\mu^2 + 1 \right)^{1/2} + \mu \right]^2, \quad (15)$$

$$\sigma_c = \frac{2c}{\left[\left(\mu^2 + 1 \right)^{1/2} - \mu \right]}, \quad (16)$$

where μ is the internal friction coefficient and c is the cohesion. $\sigma_{N \min} < 0$ and $\sigma_{N \max} > 0$ are the maximal tensile stress and the maximal compressive stress, respectively. The friction coefficient μ for sea ice is chosen equal to 0.7, which is a common value for geo-materials (Amitrano et al., 1999) and seems to be scale-independent (Weiss and Schulson, 2009). The values of the cohesion c , $\sigma_{N \min}$, and $\sigma_{N \max}$ seem to be inversely proportional to the square root of the spatial scale (Weiss et al., 2007). Here we use this scaling relationship to define their values at 10 km as equal to $c = 8$ kPa, $\sigma_{N \min} = -9.52$ kPa, and $\sigma_{N \max} = 150$ kPa from values measured in the field (Weiss et al., 2007) and in lab experiments (Schulson, 2009).

P is a vertically integrated sea ice pressure term that is set to avoid excessive convergence when the ice concentration in a cell is at 100 % and at the same time highly damaged. Without this term, one obtains unrealistically large local thickness of the ice cover, for example north of Greenland and the Canadian Archipelago. This term implies no memory effect, meaning that it cannot be included in the evolution equation of the internal stress. This term is parameterised as

$$P = P^* h^2 f(A) \Phi \nabla \cdot \mathbf{u}, \quad (17)$$

where P^* is the pressure parameter, $f(A)$ is the same function as in Eq. (6), and Φ determines if the pressure term is active or not. In our case, Φ is defined as a function of the divergence rate at the previous time step and is computed as

$$\Phi = \begin{cases} 0 & \text{if } \nabla \cdot \mathbf{u}^{(n)} \geq 0 \\ \frac{1}{|\nabla \cdot \mathbf{u}^{(n)}| + \epsilon_{\min}} & \text{if } \nabla \cdot \mathbf{u}^{(n)} < 0, \end{cases} \quad (18)$$

where ϵ_{\min} is a parameter set to a small value to regularise the transition when the divergence rate is close to 0. The quadratic dependence on the mean thickness and the value of P^* used in this study ($P^* = 12$ kPa) comes from Hibler (1986) and corresponds to the redistribution scheme of Thorndike et al. (1975) when it is applied to only one ice thickness category.

The effect of the concentration on the mechanical response of sea ice is parameterised here by a decreasing exponential function of the concentration:

$$f(A) = e^{\alpha(1-A)}, \quad (19)$$

where α is the compactness parameter (see Bouillon and Rampal, 2015b, for more details).

The air stress $\boldsymbol{\tau}_a$ is computed following the quadratic expression:

$$\boldsymbol{\tau}_a = \rho_a c_a |\mathbf{u}_a - \mathbf{u}| [(\mathbf{u}_a - \mathbf{u}) \cos \theta_a + \mathbf{k} \times (\mathbf{u}_a - \mathbf{u}) \sin \theta_a], \quad (20)$$

where \mathbf{u}_a is the wind velocity, ρ_a the air density, θ_a the atmospheric turning angle, and c_a the atmospheric drag coefficient.

The oceanic stress $\boldsymbol{\tau}_w$ is also computed following a quadratic expression, namely

$$\boldsymbol{\tau}_w = \rho_w c_w |\mathbf{u}_w - \mathbf{u}| [(\mathbf{u}_w - \mathbf{u}) \cos \theta_w + \mathbf{k} \times (\mathbf{u}_w - \mathbf{u}) \sin \theta_w], \quad (21)$$

where \mathbf{u}_w is the ocean velocity, ρ_w the reference density of seawater, θ_w the water turning angle, and c_w the water drag coefficient.

The basal stress $\boldsymbol{\tau}_b$ is a term added to simulate grounded fast ice. It is parameterised as in Lemieux et al. (2015) by the expression:

$$\boldsymbol{\tau}_b = k_2 \frac{-\mathbf{u}}{|\mathbf{u}| + u_0} \max(0, h - h_c) e^{-C_b(1-A)}, \quad (22)$$

where k_2 is the maximum basal stress parameter, u_0 is the basal stress velocity parameter, and C_b is the basal stress concentration parameter. The critical thickness from which the parameterisation starts acting is defined as $h_c = A \frac{H + \eta}{k_1}$, where k_1 is the critical thickness parameter and H is the ocean depth.

2.3 Thermodynamical component

In neXtSIM damaged sea ice recovers its mechanical strength (i.e., decrease of the damage) through time via two processes: formation of new ice in open water and leads and thermodynamical healing. Sea ice melting is supposed to have no direct impact on the damage. New ice formation is naturally treated by updating the value of the local damage as a volume-weighted average over the old and new ice. When sea ice volume in a cell increases due to ice formation, the damage then automatically decreases as new ice is supposed to have a damage equal to zero. For the thermodynamical

healing process, more assumptions need to be established. We assume here that the thermodynamical healing process is driven by the local temperature gradient between the bottom of the ice and the snow–ice interfaces and decreases the effective compliance, defined as $C = \frac{1}{1-d}$, at a constant rate. This is based on the fact that the cooler the environment, the faster the ice will freeze, so presumably low temperatures result in fast healing and warm temperatures in slower healing, with no healing occurring for temperatures over the freezing point. The damage relaxation term S_d of Eq. (2) is then computed by

$$S_d \Delta t = \left(1 - \frac{1}{C^{(n+1)}}\right) - d^{(n)}, \quad (23)$$

with $C^{(n+1)}$ given by

$$C^{(n+1)} = \max\left(\frac{1}{1-d^{(n)}} - \frac{\Delta t}{T_C}, 1\right), \quad (24)$$

and where T_C is the compliance relaxation time. This relaxation time is assumed here to be inversely proportional to the temperature difference ΔT between the bottom and snow–ice interface, which is given by

$$\Delta T = \frac{T_b - T_s}{\left(1 + \frac{k_i h_s}{k_s h}\right)}, \quad (25)$$

where T_b is the temperature at the ice base, T_s the temperature at the ice or snow surface, k_i is the heat conductivity of ice, and k_s is the heat conductivity of snow. The compliance relaxation time is then defined as

$$T_C = \max\left(\frac{T_d}{1000} \frac{40 \text{ K}}{\Delta T}, 0\right), \quad (26)$$

where T_d is the parameter controlling the healing rate. We use the constant 1000 and 40 K, which are typical values of effective compliance and temperature difference given by the model during winter, so that T_d can be interpreted as the time needed to heal the ice in winter conditions. The sensitivity to this parameter is discussed in Sect. 3. We also limit T_C to be positive so that melting conditions alone ($T_s > T_b$) cannot damage the ice.

The other components of the thermodynamical model are similar to those in classical sea ice models. There are three thermodynamical source and sink terms corresponding to S_ϕ in Eq. (1), one for each of ice volume, concentration, and snow volume. The source/sink term for the ice volume stems from the conservation of mass and can be written as

$$S_h \Delta t = A \Delta h + (1 - A) \Delta h_{ow}, \quad (27)$$

where Δh is the change in level ice volume and Δh_{ow} is ice formation in open water.

The change in A is calculated by assuming a given thickness for the ice forming over open water (Δh_{ow}). We use a

constant, h_0 , for this thickness, giving a source/sink term for A as

$$S_A \Delta t = (1 - A) \max(\Delta h_{ow}, 0)/h_0 + A \min(S_h \Delta t, 0)/2h. \quad (28)$$

Ice formation in the open water portion of the grid cell, h_{ow} , is calculated such that heat loss from the ocean that would cause supercooling is redirected to ice formation. This is an adaptation of the form suggested by Hibler (1979) in that he uses prescribed growth rates, but we calculate those depending on the atmosphere and ocean states, as described below.

The source/sink term for snow thickness, S_{h_s} , also stems from the conservation of mass and is

$$S_{h_s} \Delta t = A \Delta h_s + h_s \min(0, S_A \Delta t) + A \min(0, D - h/A) \rho_i / \rho_s. \quad (29)$$

The first term accounts for snowfall and snowmelt, the second term removes snow due to the lateral melt of ice, and the third term converts snow into ice whenever the ice freeboard, D , falls below the water surface due to snow loading. Energy needed to melt snow due to the lateral melt of ice is removed from the ocean as an additional heat flux.

Thickness changes in level ice and snow are calculated using the zero-layer model of Semtner (1976), using the same parameter values, unless otherwise stated. This is arguably the simplest usable thermodynamic sea ice model, and it has some well-known deficiencies (most notably Semtner, 1984). It does, however, suffice for short runs with a stand-alone ice model, like the ones discussed in Sect. 3.4. In this model the incoming radiative fluxes are interpolated from the forcing data, applying constant albedos to the incoming short-wave radiation of $\alpha_i = 0.64$ for the ice and $\alpha_s = 0.85$ for the snow (Maykut and Untersteiner, 1971). The turbulent heat fluxes are calculated using bulk formula for the sensible heat flux:

$$Q_{sh} = \rho_a c_p C_t |\mathbf{u}_a| (T_a - T_s) \quad (30)$$

and the latent heat flux:

$$Q_{lh} = \rho_a L_v C_q |\mathbf{u}_a| (q_a - q_s). \quad (31)$$

Here, c_p is the atmospheric heat capacity and L_v is the latent heat of sublimation. The temperature difference, $T_a - T_s$ is taken between the ice surface and the atmosphere at 2 m, the same as the difference in specific humidity, $q_a - q_s$. We calculate the specific humidity using the formulation of Buck (1981). The drag coefficients C_t and C_q are set to 1.3×10^{-3} based on Ebert and Curry (1993). Fluxes between the ice and ocean, Q_{oi} , are calculated assuming the ocean underneath the ice must always be at the freezing point.

In order to produce realistic heat fluxes through the ice, the thermodynamical ice model must be coupled to an ocean model. Here we use a simple slab ocean model that consists of a single ocean layer with one temperature and salinity

point per grid cell. The flux of heat at the ocean surface is calculated as a weighted average of the ocean–ice and ocean–atmosphere fluxes:

$$Q_w = A Q_{oi} + (1 - A) Q_{oa}, \quad (32)$$

where Q_{oa} is the ocean–atmosphere flux. The ocean–atmosphere heat flux is calculated using the bulk formulas (Eqs. 30 and 31), with $C_t = 0.83 \times 10^{-3}$ and $C_q = 1.5 \times 10^{-3}$ (Gill, 1982) for the turbulent heat fluxes, while the radiative heat fluxes are read in from the atmospheric forcing, applying a constant albedo of 0.07 to the short-wave flux.

The change in ocean salinity is calculated assuming the total salt content of the ice–ocean system is conserved, resulting in a change in salinity of

$$\Delta S = \frac{(S_o - S_i) \rho_i \Delta h + S_o (\Delta h_s \rho_s - F_{fw} \Delta t)}{H_{ml} \rho_w - \Delta h \rho_i - (\Delta h_s \rho_s - F_{fw} \Delta t)} \quad (33)$$

for a change in ice and snow area mean thickness of Δh and Δh_s respectively, and where S_o and S_i are the ocean salinity and ice salinity, respectively, ρ_i and ρ_s are the ice and snow density, respectively, F_{fw} is freshwater flux at the surface, H_{ml} the mixed layer depth, and Δt the model time step. We assume a constant ice salinity of $S_i = 5$ psu.

When using a slab ocean, simulated ocean temperature and salinity have to be artificially maintained at realistic values because of the missing representation of both vertical and horizontal heat and salt exchanges within the ocean. Here, we use Newtonian nudging to relax the simulated ocean temperature and salinity towards the values of the uppermost ocean layer from a full ocean model (in this case the TOPAZ4 system, see Sect. 3.1). The local mixed layer depth from the full ocean model is also used as the mixed layer depth (H_{ml}) of the slab ocean model.

2.4 Remeshing and remapping

Most sea ice models use an Eulerian approach for the advection. However, we believe that a purely Lagrangian approach as in Wang and Ikeda (2004) may be more suitable to preserve highly localised features (i.e. one cell wide ridged or open water areas) generated by the model. Continuous, purely Lagrangian schemes require unstructured meshes and a procedure for mesh adaptation. Local mesh modifications can be done in parallel and introduce very low numerical dissipation (Compère et al., 2009). They also show local conservation (Compère et al., 2008).

In the purely Lagrangian approach, the vertices of the element (i.e. the nodes of the grid) move with the sea ice velocity \mathbf{u} . The material derivative is then simply equal to the temporal derivative $\left. \frac{\partial \phi}{\partial t} \right|_X$ relative to the moving mesh so that the quantities are naturally transported with the ice. The sea ice thickness and concentration, for example, are simply updated by

$$h^{(n+1)} = h^{(n)} \frac{S^{(n)}}{S^{(n+1)}}, \quad (34)$$

and

$$A^{(n+1)} = \min \left(A^{(n)} \frac{S^{(n)}}{S^{(n+1)}}, 1 \right), \quad (35)$$

where $S^{(n)}$ and $S^{(n+1)}$ are the surface of the element at time steps n and $n + 1$. The variables defined at the nodes do not need to be updated.

In this approach the model mesh deforms as the ice cover itself deforms. When the mesh becomes too distorted the results of the finite element method are no longer reliable and the mesh must be adjusted, a process referred to as remeshing. In the current implementation the mesh is considered too deformed when the smallest angle of any triangle of the mesh is smaller than 10° . Using this criterion and the set up we use here, the mesh needs to be adapted on average every model hour.

In order to save computational time the forcing fields are only interpolated onto the model grid after remeshing, or when new forcing fields are required. This means that even though the model grid drifts and deforms in-between remeshings the forcing seen by the nodes and elements of the model does not change. We checked that this method gives virtually identical results as when we interpolate the forcing fields every time step. Indeed as the remeshing criterion is global the error in the position of the forcing field is in practice never larger than a single model element. Given the high resolution of the model grid in our tests, the forcing fields are too smooth and too coarsely resolved for this error to have any substantial effect.

The approach used for the slab-ocean is similar to that used for the forcing in that the fields are only interpolated after remeshing. The slab-ocean model resides on the same mesh as the ice model, but the relative displacement of ice and ocean is ignored between remeshing steps. When the model mesh becomes too deformed and therefore needs to be remeshed, the temperature and salinity are interpolated from the old onto the new mesh using a linear interpolation and ignoring the displacement of the old mesh. This ensures that the temperature and salinity fields do not drift with the ice as the ice-model mesh moves.

The new mesh is created by a version of the BAMG mesh generator by Hecht (1998) taken from the Ice Sheet System Model (Larour et al., 2012). This mesh generator can be instructed to preserve as many of the nodes from the old mesh as possible. The mesh is thus only modified in a limited number of locations, hereafter called cavities, at each remeshing. Doing this allows the model to track large expanses of drifting ice that is deforming very little without any artificial diffusion, since it is only necessary to interpolate values from the new grid to the old one inside the cavities. Outside the cavities the tracer values are not affected by the remeshing. For the variables defined at the nodes (i.e. the sea ice velocities, etc.), a non-conservative linear interpolation is performed for the new nodes.

For the quantities that are defined at the centre of the elements, a conservative remapping scheme is applied to each cavity independently. The cavities are defined as the smallest partitions of the mesh for which the external edges are the same before and after the remeshing. We implemented an algorithm that uses the information provided by BAMG (i.e. node-element connectivity and previous numbering of the preserved nodes) to efficiently detect the cavities and the intersections between the triangles of the old and new meshes. For each intersection, the corresponding integrated quantities are transferred from the old mesh to the new one. The process is fully conservative and generates only limited numerical diffusion.

3 Model evaluation and sensitivity

3.1 Simulation set-up

For the model evaluation we force our model with the ocean state of the TOPAZ4 reanalysis (see Sakov et al., 2012), and with the atmospheric state of the Arctic System Reanalysis, Interim version (ASR-Interim hereafter) (<http://rda.ucar.edu/datasets/ds631.4/>, Byrd Polar Research Centre/The Ohio State University (2012). Accessed 1 January 2014.) TOPAZ4 is a coupled ocean–sea ice system combined with a state-of-art ensemble Kalman filter data assimilation scheme of both ocean and sea ice variables, running at an average resolution of 12.5 km in the Arctic. The TOPAZ4 bathymetry is based on the 1 arc minute GEBCO bathymetry (Jakobsson et al., 2008) and the coastline is derived from the 5 m isobath. The main benefit of using the TOPAZ reanalysis in this context is its accuracy in simulating the location of the ice edge, and therefore to provide realistic forcing for ocean temperature and salinity. The ASR-Interim is a high-resolution atmospheric reanalysis (30 km) known to reproduce the near-surface wind fields particularly well (Bromwich et al., 2015).

In order to simplify the forcing of the slab ocean with TOPAZ4, the domain of our model is defined from TOPAZ4 coastlines and open boundaries. The resulting mesh covers the Arctic and North Atlantic oceans, extending from an open boundary at 43° N in the North Atlantic to an open boundary in the Bering Strait (see Fig. 1). The resolution of the finite element mesh is about 11 km, where the resolution is defined as the square root of the mean element area. Note that the ocean depth H used for the basal stress parameterization comes from the 1 arc minute ETOPO1 global topography (Amante and Eakins, 2009).

The oceanic forcing variables are sea surface height, velocity at 30 m depth, and sea surface temperature and salinity, which are provided as daily means by the TOPAZ4 system. We interpolate these quantities temporally and spatially onto the model mesh at run time using linear and bilinear interpolation methods, respectively. The slab-ocean temperature and salinity are nudged towards TOPAZ4 and we found 30 days

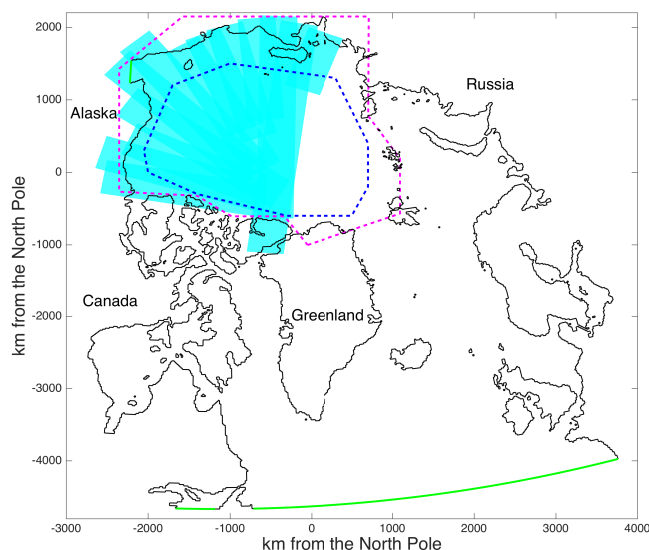


Figure 1. Model domain projected on a polar stereographic plane, with open boundaries in green. The region delimited by the dashed blue line and the cyan area is used to compute the drift and deformation statistics. The dashed line in magenta shows the area for which the mean ice thickness and ice volume time series are calculated.

to be an appropriate nudging timescale for this set-up. This value allows our model to reproduce the location of the ice edge well without unduly affecting heat fluxes in the central Arctic. The heat flux resulting from the nudging is usually slightly below 0.5 W m^{-2} in the central Arctic in midwinter, which is a reasonable value (see e.g. Sirevaag et al., 2011).

The atmospheric forcing consists of the 10 m wind velocity, the 2 m temperature and mixing ratio, mean sea level pressure, total precipitation and the fraction of that which is snow, and the incoming short-wave and long-wave radiation. All of these quantities are provided as 3-hourly means by the ASR-Interim. Similarly to the oceanic variables, we interpolate them temporally and spatially onto the model grid at run time using a linear and bilinear interpolation method, respectively.

In order to prevent an initial shock to the system when the model is started, the strength of applied wind and ocean currents is increased linearly from zero to full strength over the period of 1 day.

Our reference simulation starts on 15 September 2007 and ends on 9 October 2008. We choose this year because this is the only winter when the GlobICE (<http://www.globice.info>) and RGPS (Kwok et al., 1990) data sets overlap. The values of the model parameters that are used for this simulation are listed in Table 2. Damage is initially set to zero where sea ice is present. Initial sea ice concentration and thickness are interpolated from the sea ice of the TOPAZ4 reanalysis. The modelled ice thickness in TOPAZ4 is known to be unrealistically low on average compared to other Arctic ice–ocean coupled systems (Sakov

Table 2. Parameters used in the model with their values for the simulations performed for this study.

Symbol	Meaning	Value	Unit
ρ_a	air density	1.3	kg m^{-3}
c_a	air drag coefficient	7.6×10^{-3}	–
θ_a	air turning angle	0	°
ρ_w	water density	1025	kg m^{-3}
c_w	water drag coefficient	5.5×10^{-3}	–
θ_w	water turning angle	25	°
ρ_i	ice density	917	kg m^{-3}
ρ_s	snow density	330	kg m^{-3}
α_i	ice albedo	0.64	–
α_s	snow albedo	0.85	–
ν	Poisson coefficient	0.3	–
μ	internal friction coefficient	0.7	–
Y	elastic modulus	9	GPa
Δx	mean resolution of the mesh	10	km
Δt	time step	200	s
T_d	damage relaxation time	28	days
c	cohesion parameter	8	kPa
α	compactness parameter	–20	–

et al., 2015) (<http://marine.copernicus.eu/documents/QUID/CMEMS-ARC-QUID-002-003.pdf>). We therefore scale it uniformly so that the initial total ice volume is the same as that from the PIOMAS reanalysis (Zhang and Rothrock, 2003, data downloaded from <ftp://pscftp.apl.washington.edu/zhang/PIOMAS/> on 4 February 2014). Initial snow thickness is from the Warren et al. (1999) climatology, but we limit the snow thickness to 20 % of the ice thickness so that we do not get unrealistically thick snow on the relatively thin ice that was present at the start of the simulation.

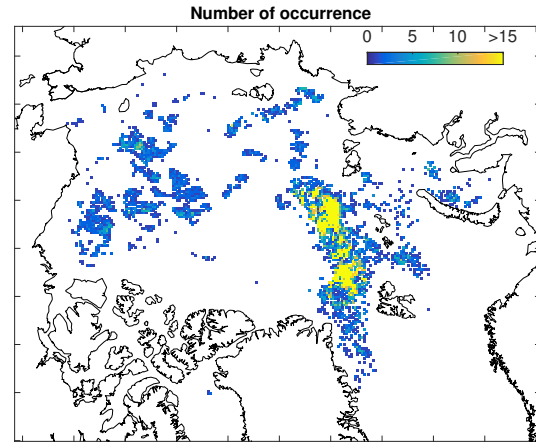
3.2 Drag coefficient optimisation and evaluation of simulated ice drift

In neXtSIM, as in most classical sea ice models, the air and water drags depend on four parameters: c_a the air drag coefficient, θ_a the air turning angle, c_w the water drag coefficient, and θ_w the water turning angle. The value of these four parameters has to be calibrated depending on which atmospheric and oceanic forcing are being used. The purpose of this section is to present how we proceed with this calibration for the present study.

3.2.1 Basics of the method

By performing a scale analysis, it can be shown that the sea ice momentum equation (Eq. 3) is actually dominated by three terms: the ice internal stress, the surface wind drag, and the surface ocean drag. This equation can therefore be written as

$$\nabla \cdot (h\sigma) + \tau_a + \tau_w = 0. \quad (36)$$

**Figure 2.** Number of occurrence of free drift events identified between 31 October 2007 and 28 April 2008 and selected for the optimisation of the air drag parameter.

To prevent the rheology from affecting the optimisation process of the drag parameters, we only consider situations for which sea ice is in “free drift”, i.e. situations where the internal stress term can be neglected in Eq. (36). By using Eqs. (20) and (21) and assuming that $|\mathbf{u}| \ll |\mathbf{u}_a|$, the solution of Eq. (36) then becomes

$$\mathbf{u} = \mathbf{u}_w + Na \mathbf{u}_a, \quad (37)$$

where $Na = \sqrt{\rho_a c_a / \rho_w c_w}$ is the Nansen number. The first estimate of this number ($Na \approx 2\%$) was made by Fridtjof Nansen during the Fram expedition (1893–1896) by comparing the drift of his boat, while trapped in sea ice, to local wind and ocean velocities. The air and water density being considered as constant, the Nansen number only depends on the ratio between the two drag coefficients, c_a and c_w . In the free drift mode, calibrating the Nansen number is then equivalent to calibrating one of the drag parameters while keeping the other one constant.

The calibration method uses a full winter of sea ice drift data (here from the GlobICE data set, <http://www.globice.info>), a reference run of 1 year starting in September 2007, and a series of short simulations restarted every 9 days from the reference run with the model being in free drift mode. To perform the simulation in free drift mode, we set the Young’s modulus Y and the pressure parameter P^* to 0. For each drift vector from the observation data set, we compute the corresponding simulated drift vector from the 6-hourly Lagrangian sea ice displacement fields produced by the two sets of experiments, the reference run and the 9-day free drift run. The simulated drift from the reference run is selected for the optimisation analysis only if it differs by less than 10 % from the drift simulated by the free drift run. As in McPhee (1979), we also restrict the analysis to the range of ice speeds going from 7 to 19 km day^{-1} . As a result, about 15 000 vectors are selected from the 20 analysed periods of 9 days (from

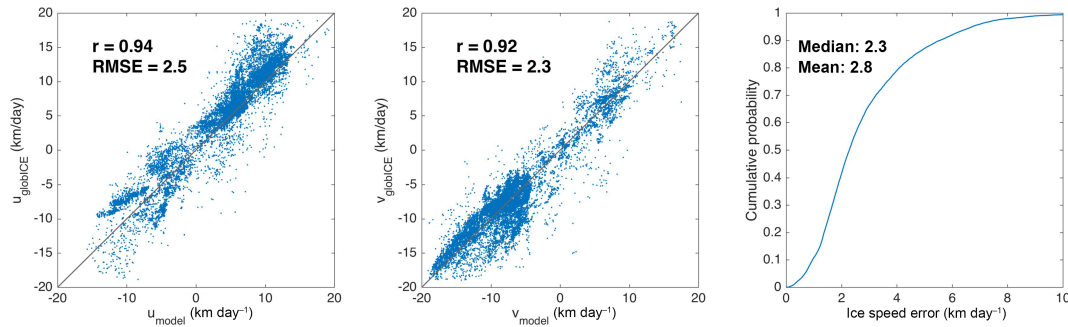


Figure 3. Scatter plots for the two components of the simulated and observed drift selected from the air drag optimisation procedure (left and middle panels). Cumulative distribution of the velocity errors (right panel).

31 October 2007 to 28 April 2008). As shown on Fig. 2, the identified free drift events are mainly located in the Transpolar Drift, in the Beaufort Gyre, and near the ice edge (i.e. in Greenland, Barents, and Kara seas). Note that the number of identified free drift events also depends on the observation coverage, which is indeed high in the areas just mentioned.

3.2.2 Results of the method

By optimising the air drag parameters for these selected free drift vectors, we find an optimal value of $c_a = 0.0076$, corresponding to a Nansen number equal to $Na = 4.2\%$. Here, the optimal value is found to be higher than the classical values, which is consistent with the negative bias documented for ASR-Interim surface winds (Bromwich et al., 2015). Doing the same exercise for ERA-Interim winds (Dee et al., 2011), which are frequently used to force large-scale sea ice models, the optimal air drag coefficient is found to be $c_a = 0.0023$ (i.e. $Na = 2.3\%$), which is much closer to classical values. The scatter plots for each component of the selected vectors are shown in Fig. 3. For each component, the correlations between the simulated and observed free drift vectors are equal to 0.94 and 0.92, respectively, and the root mean square errors (RMSEs) are equal to 2.5 and 2.3 km day^{-1} . The cumulative probability of the error in velocity is shown in Fig. 3, along with the median and mean error, which are equal to 2.3 and 2.8 km day^{-1} , respectively. Note that the RMSE and median and mean errors, when using ERA-Interim with its optimal air drag coefficient, were found to be about 50 % larger than the ones found when using ASR-Interim.

3.2.3 Evaluation of simulated sea ice drift and sensitivity to the healing timescale

The quality of the simulated sea ice drift is evaluated by comparing simulated velocity vectors to the ones provided by the RGPS and GlobICE data sets between 31 October 2007 and 28 April 2008. The high spatial and temporal resolution of these data sets (about 3 days and 10 km) make it possible to compare a very large number of simulated and observed drift vectors, as shown on the scatter plots in Fig. 4, and in-

crease the robustness and level of confidence of our model evaluation. The correlation for each component is slightly lower than in the free drift analysis (0.85 and 0.87, respectively, compared to 0.92 and 0.94) but is still very good. The RMSE values are similar to these of the free drift analysis (2.5 and 2.2 km day^{-1} , respectively) which is remarkable knowing that here no selection nor restriction has been applied to the data. The median and the mean velocity errors are remarkably low, 1.9 and 2.4 km day^{-1} respectively. These results are in good agreement with observations, which may be attributed to the quality of the atmospheric forcings and to a proper representation of sea ice drift in the pack.

The sensitivity of the correlation, RMSE, and velocity errors to the healing timescale parameter is presented on Fig. 5. The reference simulation is obtained with a healing timescale parameter equal to 28 days. Using larger healing timescales does not improve the correlation with either the observations, the RMSE, or the mean and median errors. Using shorter healing timescales decreases the skills of the model at reproducing the observed ice velocity.

To identify potential systematic errors, we also look at the mean sea ice drift by averaging modelled and observed drift over the whole season on a mesh grid of 21 by 21 km, covering the whole observation domain (see Fig. 6). For each cell, we also show the total number of observations to indicate the areas where data coverage is poor. As shown on Fig. 7, the largest differences between the observed and simulated mean ice drift are located in the Beaufort Gyre and Fram Strait and in some areas of the Kara, East Siberian, and Chukchi seas. These systematic errors may be partly explained by errors in the oceanic surface currents of TOPAZ, especially for the Beaufort Gyre. In the rest of the domain, the error on the mean winter drift is remarkably low, i.e. $< 1 \text{ km day}^{-1}$.

The mean drift speed, taken over the central Arctic, correlates closely with the mean wind speed taken over the same area. This is to be expected, since the wind is the main driver of ice drift. We do, however, expect to see a significant difference between the ice response to wind in summer and in winter, due mainly to changes in ice concentration and thickness. In order to assess this effect, Fig. 8 shows the ratio

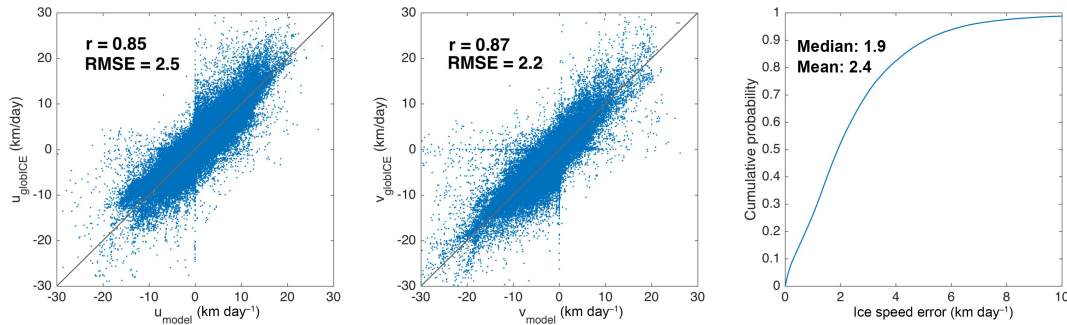


Figure 4. Scatter plots for the two components of all the simulated and observed drift vectors between 31 October 2007 and 28 April 2008 (left and middle panels). Cumulative distribution of all the velocity errors (right panel).

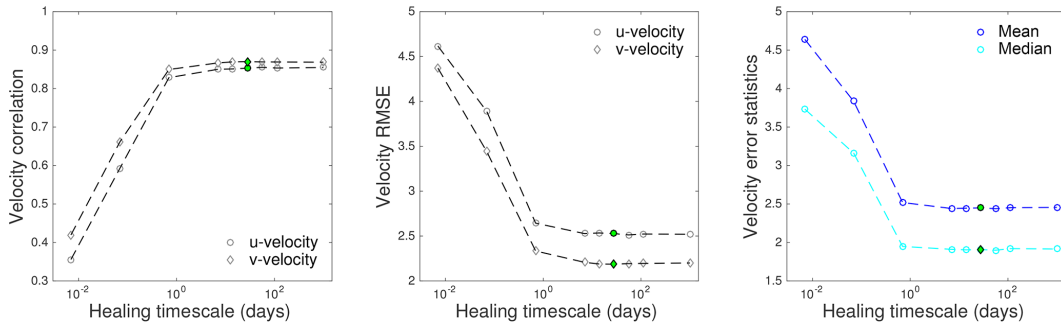


Figure 5. Sensitivity of the velocity statistics to the healing timescale. The left panel shows the correlation between the simulated and observed ice drift, the central panel shows the RMSE and the right panel the velocity mean and median velocity errors. The dots in green correspond to the reference run (28 days healing timescale).

of drift speed to wind speed for the reference run, a model run forced with ERA-Interim, and the ratio of the climatology of the International Arctic Buoy Programm (IABP) buoy drift speed to ERA-Interim wind speed climatology. The two model runs considered here show a clear seasonal cycle in the drift speed to wind speed ratio. This is highest in summer, decreasing steadily from August to January, when it plateaus until April and then starts increasing again. Ólason and Notz (2014) found that over the 33 years they considered, the observed drift speed depends on concentration when concentration is low, thickness when concentration is high, and is related to an increased number of active fractures in April–May. It is not clear how well our model captures this relationship since the results for only 1 year can be heavily influenced by the timing and intensity of storms passing through the region. However, it is clear that the general shape of the observed time series for the drift speed to wind speed ratio is reproduced by the model, indicating that it captures the transition between freely drifting ice and pack ice correctly. In terms of magnitude, the drift speed to wind speed ratio for the run forced with ERA-Interim is slightly higher than the climatology. This is to be expected since both are based on ERA-Interim wind; the slight magnitude shift between the two is likely to be caused by the positive trend in Arctic sea ice drift speed that was originally revealed from the analysis

of the IABP data set and reported by Rampal et al. (2009). Additionally, one can note a significant difference between the ratio time series of the reference run (in cyan) and that of the run forced with ERA-Interim (in blue). This can be explained by the fact that the winds in ASR-Interim (used as forcing in the reference run) are weaker than in ERA-Interim, but this effect is counteracted in the model by tuning the drag coefficient, as discussed earlier.

3.3 Evaluation of simulated sea ice deformation and sensitivity to the healing timescale

One of the main differences of neXtSIM compared to other sea ice models is the rheology, which defines the link between internal stress and deformation. For the internal stress, only a few observations are available and cannot be directly used for a complete evaluation.

However, since we have calibrated the two other dominant terms of the momentum equation (i.e. the oceanic and atmospheric drag terms), then we can use an evaluation of the overall drift and deformation of the ice as an evaluation of the internal stress. A good way to evaluate the new rheology is then to compare the simulated deformation fields to the large amount of data available from satellite products. The data

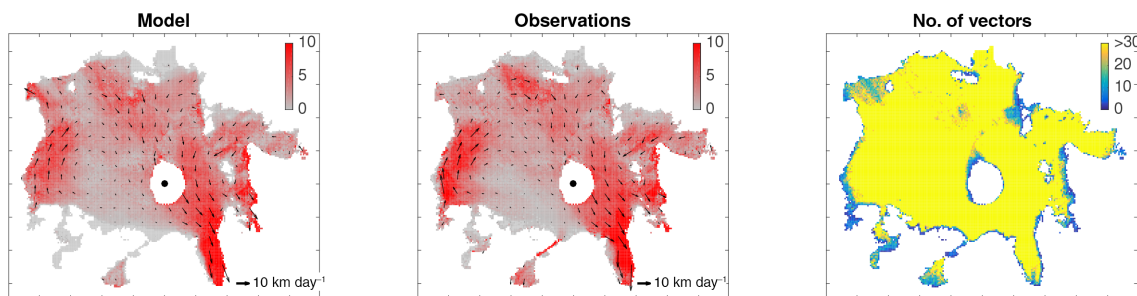


Figure 6. Simulated and observed ice drift averaged over the period between 31 October 2007 and 28 April 2008 (left and middle panels). The number of observations is shown in the right panel. The mean fields are built on a regular grid with a resolution of 21 km and are computed by averaging the components of the simulated and observed drift vectors used for the scatter plot. Note that the colour scale for the number of observations is capped at 30 to show that some regions are poorly covered by data.

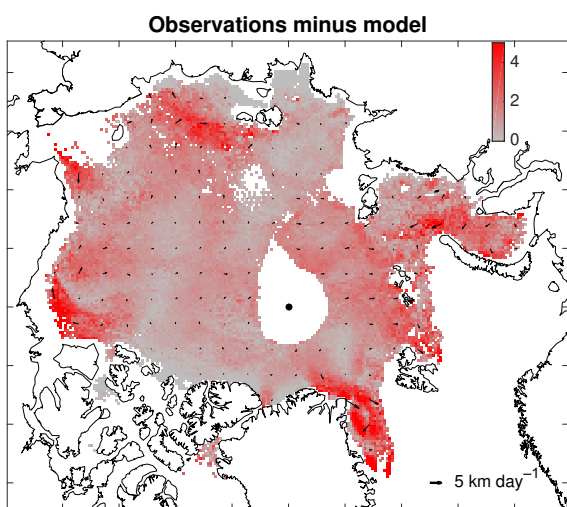


Figure 7. Difference between the observed and simulated mean ice drift shown on Fig. 6. The cells with less than 30 observations over the winter are masked. Systematic errors are located in the Beaufort Gyre and Fram Strait and in some areas of the Kara, East Siberian, and Chukchi seas. In the rest of the domain the error on the mean winter drift is only about 1 km day⁻¹.

used here are produced from the RGPS sea ice drift data set with the method proposed by Bouillon and Rampal (2015a).

An interesting specificity of sea ice deformation is its strong localisation in space (see Fig. 9) and in time.

This makes a comparison of the geographical location of the observed and simulated deformation features impractical, since small errors in the applied forcing are bound to result in significant changes in the simulated location, compared to the extent of the features. Instead we compare simulated and observed deformation in a statistical sense using, among others, the multi-scale metrics introduced by Marsan et al. (2004) and Rampal et al. (2008).

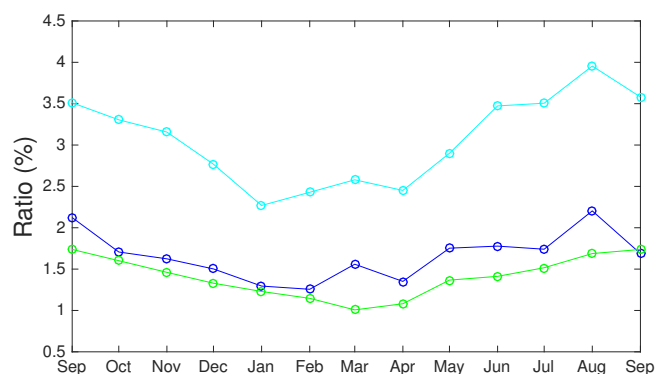


Figure 8. Ratio of drift speed over wind speed for the reference simulation forced with ASR-Interim (cyan) and a simulation forced with ERA-Interim (blue). As a reference the same ratio is shown for the IABP buoys drift speed climatology over the ERA-Interim wind speed climatology (green).

The comparison with observation is focussed on the period January–April 2008, which has been identified as the period for which deformation is typically lower than during the rest of the year (see the annual cycle presented later in the paper). Figure 10 shows time series of the observed and simulated mean shear rate from January to April 2008. The deformation rates are computed at a spatial scale of 20 km and for 13 periods of 9 days. As in the previous sea ice drift evaluation, the model data are built to match the observations spatially and temporally. The correlation between the observed and simulated mean shear values is satisfactory, but we note that the model systematically underestimates the mean shear rate during this period.

Spatial scaling properties of sea ice deformation (or the degree of heterogeneity of sea ice deformation) can be studied from the analysis of Lagrangian trajectories, as e.g. in Marsan et al. (2004) who applied it to the trajectories of the RGPS data set. Here we perform this analysis for both the model and the satellite observation, following the method used in Bouillon and Rampal (2015a), which is very simi-

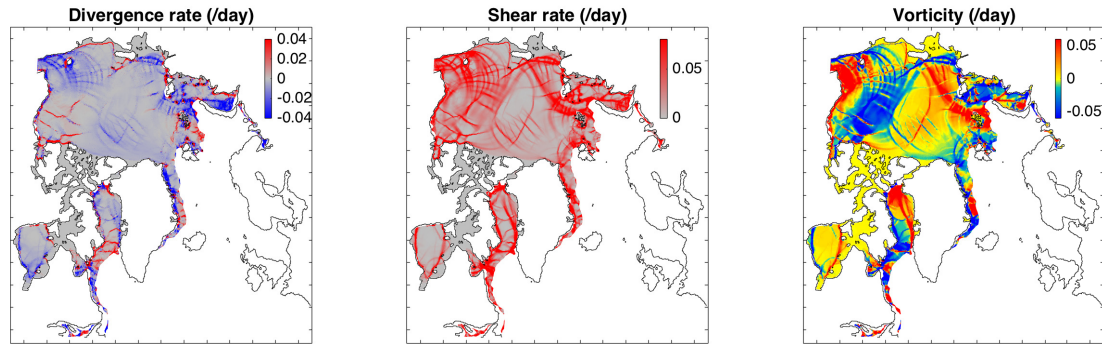


Figure 9. Example of deformation fields simulated by neXtSIM. The divergence rate, shear rate, and vorticity are computed from the Lagrangian displacement simulated between 20 and 21 February 2008. One could note that a large divergence rate coincides with a large shear rate and that landfast ice is present on the Siberian coast and east of Kara Sea.

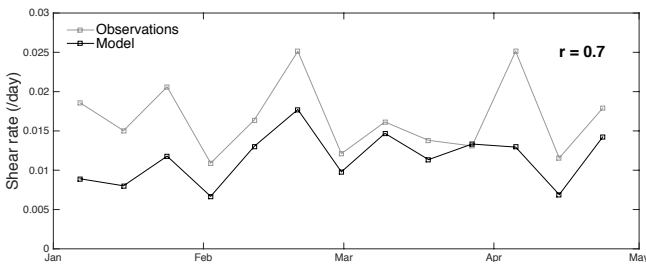


Figure 10. Mean value of the shear rate distributions corresponding to 13 periods of 9 days between January and May 2008. The deformation rates are computed at a spatial scale of 20 km for matching times and locations between the observation and the model following the same procedure as in Bouillon and Rampal (2015a).

lar to the one of Marsan et al. (2004), and which also gives an estimate of the error on the spatial scaling exponent. The spatial scaling analysis has been first applied to all the 13 snapshots corresponding to the 9-day periods between 1 January and 28 April 2008. Four snapshots had to be discarded because the power-law model fit was not significant in the least squared sense due to the excessive noise in the observed deformation fields. The values of the first-order moment of the shear rate (here denoted $\dot{\epsilon}_s$) distribution obtained when gathering the selected snapshots is shown in Fig. 11 for different spatial scales. The power law $\langle \dot{\epsilon}_s \rangle \sim L^{-\beta}$ that fits the data (grey and black lines) corresponds to a scaling exponent β of -0.16 for the observations and -0.11 for the model. The departure from the power-law fit at $L < 20$ km and $L > 500$ km comes from finite size effects (model resolutions and size of the Arctic basin, respectively). The scaling exponents $\beta(q)$ for the other moment orders of the shear distribution fit well with a quadratic function of q , whose curvature is equal to 0.13 for the observation and 0.07 for the model. This shows that like observed deformations (Marsan et al., 2004; Rampal et al., 2008), the deformation simulated by the model is characterised by a multi-fractal spatial scaling.

Temporal scaling properties of sea ice deformation (or the degree of intermittency of sea ice deformation) can be studied from the dispersion of passive tracers (Rampal et al., 2008). Note that this approach is inspired by a classical methodology developed originally to study fluid turbulence (Richardson and Stommel, 1948; Batchelor, 1952). Here we perform the temporal scaling analysis for both the model and the observations following the same method as in Rampal et al. (2008), using pairs of vertices of the model mesh and pairs of tracking points of the RGPS trajectory data set, respectively. Indeed, in a Lagrangian modelling framework, each vertex of the mesh can be considered as a passive tracer of sea ice, and directly compared with tracking points of the RGPS data set. For each pair of vertices/RGPS points initially separated by a distance L of ~ 30 km on average, a proxy of sea ice deformation D is measured by looking at the relative variation $\Delta L/L$ of the distance between the two vertices/RGPS points for different time intervals Δt . The deformation rate \dot{D} is estimated as $\dot{D} = \frac{\Delta L}{L \Delta t}$. For the model the intervals are 0.25, 0.5, 1, 2, 4, 8, 16, 32, and 64 days, whereas the analysis for the RGPS trajectories only starts from a time interval of 2 days due to the limited temporal resolution of these data. The number of analysed measurements is similar to Rampal et al. (2008) and decreases from 630 000 for the 0.25 day interval to 2600 for the 64 days interval. Figure 12 shows the mean value of $|\dot{D}|$ for the different timescales for the model and the observations. A power-law model $\langle |\dot{D}| \rangle \sim T^{-\alpha}$ from $T = 2$ to 64 days fits both the observed and simulated data very well, with the same scaling exponent $\alpha = 0.3$. Previous studies based on buoy data indicate that the scaling should also hold for smaller scales. This is not the case for the model data and cannot be verified from the RGPS data used in this study. The right panel of Fig. 12 indicates that the model only gives the right scaling exponent for healing timescales equal and larger than 7 days. We note that the order of magnitude of the healing timescale obtained here is consistent with the optimal value obtained in the previous section when analysing the sensitivity of the

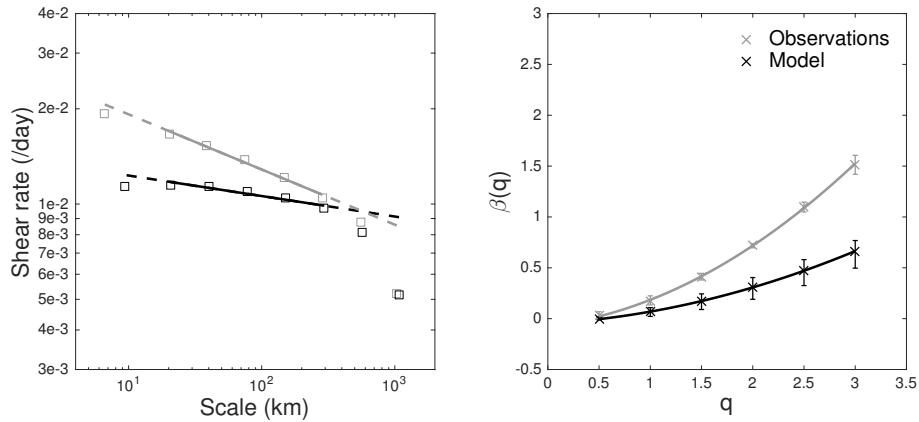


Figure 11. Scaling analysis of sea ice deformation performed for the period January–May. The left panel shows the mean shear rate (i.e., the first-order moment of the distribution) computed for spatial scales ranging from ~10 to 1000 km. A power law $\langle \dot{\epsilon}^q \rangle \sim L^{-\beta(q)}$ is fitted to the data sets for each moment order q ranging from 0.5 to 3 (grey and black lines on the left panel for $q = 1$). The departure from the power-law fit at $L < 20$ km and $L > 500$ km comes from finite size effect (model/data resolutions and size of the Arctic basin, respectively). The scaling exponents $\beta(q)$ for the other moment orders of the shear distribution are shown in the right panel. These values fit remarkably well with a quadratic function, which reveals the multi-fractal character of the scaling. The error bars correspond to the minimum and maximum exponents computed over two consecutive scales.

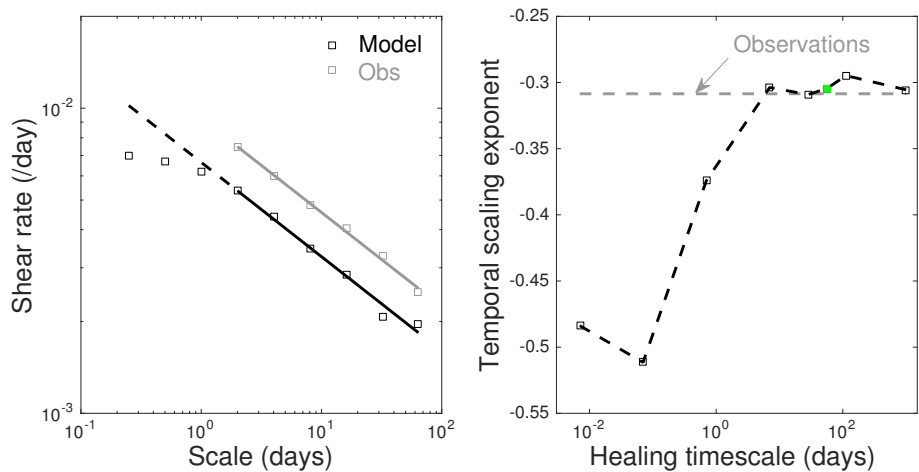


Figure 12. Temporal scaling analysis of sea ice deformation performed for the period January–May. Left panel shows the mean deformation rate (i.e., the 1st order moment of the distribution) computed for temporal scales ranging from 6 h to 60 days. The deformation rate is here defined as in Rampal et al. (2008). A power-law fit $\langle \dot{\epsilon}^q \rangle \sim T^{-\alpha(q)}$ is calculated for the data sets for each moment order q ranging from 0.5 to 3 (grey and black lines on the left panel for $q = 1$) and the scaling exponents are found to be very similar between the model and the observations. This shows the model captures the observed intermittency of sea ice deformation. The right panel shows the sensitivity of the scaling exponent for the mean ($q = 1$) to the healing timescale. The green square corresponds to the exponent obtained for the reference run (shown on left panel).

model with respect to sea ice drift. The low sensitivity to the healing time parameter for values larger than 14 days may indicate that the thermodynamical healing term is not needed and that the healing due to new ice formation is sufficient. However, as this may not be true for all model configurations, we prefer keeping the thermodynamical healing term in the description of the model.

The simulated mean value and spatial scaling exponent of the 3-day deformation evolves during the year of simulation

(see Fig. 13), with much lower mean deformation between January and April, and a more negative scaling exponent in summer than in winter. We note that this behaviour, as well as the high variability, compares well with the results found by Stern and Lindsay (2009) from the analysis of the whole RGPS data set.

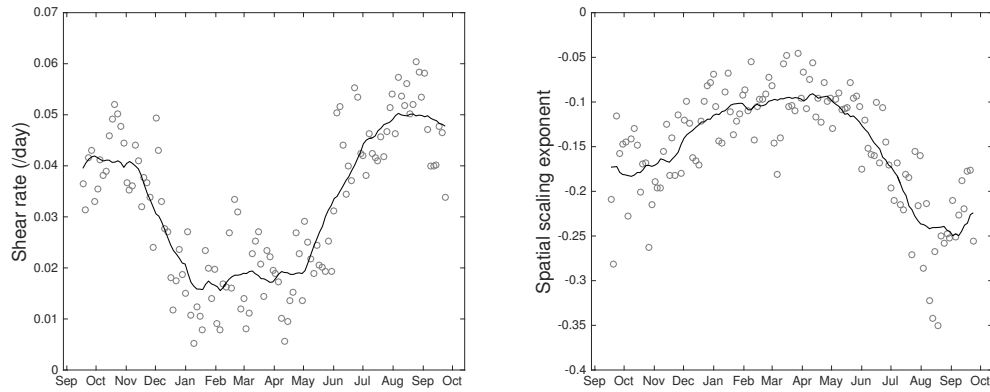


Figure 13. Evolution of the mean shear rate simulated by the model (left panel) and of the corresponding spatial scaling exponent (right panel). The circles correspond to the values computed for each of the 125 periods of 3 days covering the whole simulation period, and the curves are the 1-month running means. The data shown here are for the cyan blue area of Fig. 1 only.

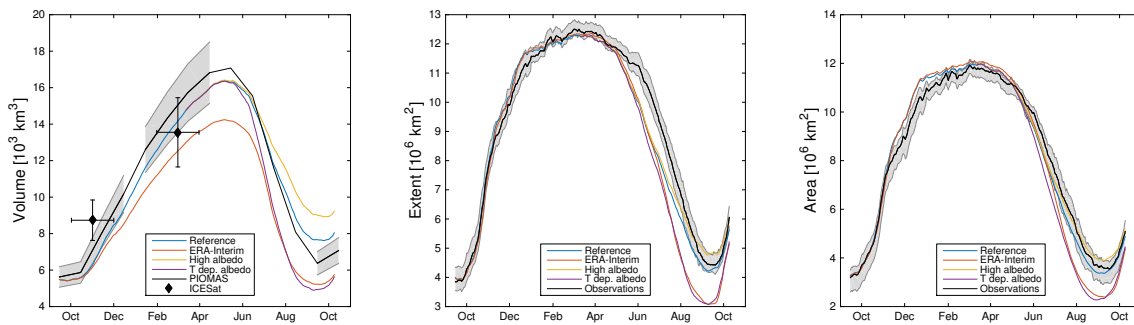


Figure 14. Modelled seasonal cycle in volume (left panel), extent (centre panel), and area (right panel). The volume is calculated within the area covered by the ICESat observations (1) and can be compared to the ICESat and PIOMAS results. The extent and area are calculated within the model grid and can be compared to the AMSR-E observations. Error bars and grey shading indicate observational uncertainties (for further details see text).

3.4 Evaluation of simulated sea ice extent and volume seasonal cycles and sensitivity to thermodynamical parameters

We now consider the modelled seasonal cycle in total ice volume and area. This section is intended to demonstrate that the model produces a reasonable seasonal cycle and to explore briefly its sensitivity to key parameters. An in-depth evaluation and tuning of these aspects of the model's behaviour would require several multi-decadal runs, which we consider outside the scope of this paper. For this purpose results from three runs, in addition to the reference run are shown: a run with fixed albedos of $\alpha_i = 0.7$ and $\alpha_s = 0.9$ (high albedo case), a run with temperature-dependent albedos (Hunke et al., 2015), and a run forced with the ERA-Interim reanalysis results.

Figure 14a shows the modelled total ice volume compared to monthly mean outputs from PIOMAS and observations from ICESat (Kwok et al., 2004, data downloaded from <http://rkwok.jpl.nasa.gov/icesat/download.html> on 6 March 2015). The estimates are calculated for the region

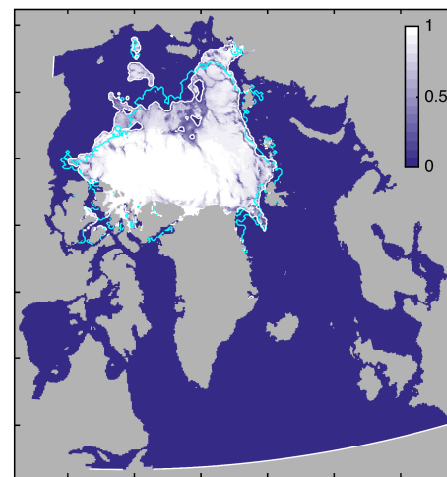


Figure 15. Modelled ice concentration at the observed extent minimum (19 September 2008). Overlaid are lines for the modelled and observed (AMSR-E) 15% concentration limit in white and cyan, respectively.

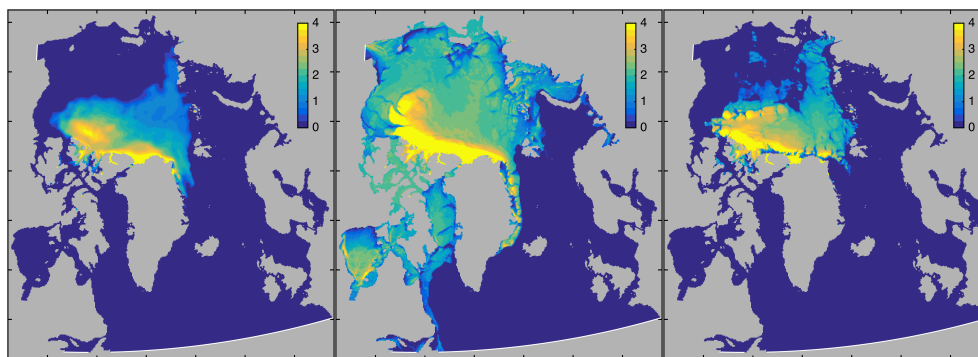


Figure 16. Ice thickness for the initial conditions (left panel), the model state at midwinter (centre panel), and the model state at observed extent minimum (right panel). Note the increasing heterogeneity in the sea ice thickness field emerging from the new physics included in the model.

delimited by the magenta dashed line of Fig. 1. The shaded areas around the PIOMAS results show the uncertainty assigned to the PIOMAS results by Schweiger et al. (2011), and the horizontal and vertical error bars on the ICESat data points are the time span for the observations and the uncertainty assigned to those observations by Zygmontowska et al. (2014). Both uncertainty estimates are probably upper bounds according to their authors. It is difficult to assess model performance in terms of total ice volume due to the lack of reliable observations. The uncertainty on the ICESat observations is substantial and the quality of the October–November estimate in particular is suspect. Because of this lack of data we chose to also plot the total volume from the PIOMAS model, but this should also only be considered a reference and not an accurate representation of the state of the ice cover. With these caveats in mind we see that the performance of the reference run is acceptable when it comes to ice volume. The melt rate can also be substantially affected by tuning the albedos, as expected.

Figure 14b and c show the modelled sea ice extent and area respectively, compared to satellite observations. The area is simply the total area covered by sea ice, while the extent is the total area of grid cells covered with more than 15 % of sea ice. The observations shown are the mean values and extremes for daily observations using the ASI algorithm AMSR-E (Kaleschke et al., 2001; Spreen et al., 2008, data obtained from the Integrated Climate Data Center, University of Hamburg, Germany, <http://icdc.zmaw.de>), OSI-SAF (EUMETSAT Ocean and Sea Ice Satellite Application Facility, 2015), NASA Team (Cavalieri et al., 1996), and bootstrap (Comiso, 2000) products. Using these four products gives a good idea of the uncertainty involved in the satellite observations (Ivanova et al., 2014).

In terms of extent, the results of the neXtSIM model are within the limits for the uncertainty estimates for the observations until the start of May. At this point the modelled melt is considerably more rapid than the observed one, leading to a difference of about 1.5 million km² at the beginning of

June. From then, however, the observed melt becomes much more rapid and the end result is that the modelled extent at the extent minimum is within the limits of the observations uncertainties. Changing the forcing or albedos does affect the melt substantially, but it does not alter the fact that the model fails to capture the two-phased melt observed, a slow phase from early April to early June and a rapid phase from early June to early September.

In terms of total ice area, the model slightly overestimates the ice area during the freeze-up, but is in good agreement with observations for the rest of the model run. This is, however, not the case when using the ERA-Interim forcing or the temperature-dependent albedos since in those cases the melt is too rapid, resulting in total ice area that is about 1.5 million km² smaller than in the reference run.

There is, therefore, a discrepancy between the modelled extent and area when compared to the observations, in that the modelled extent is too low during melt but the modelled area is correct. This seems to indicate that as the ice concentration is reduced during melt, the ice compacts too easily, resulting in the correct area but too low extent. This issue is currently under investigation.

The spatial distribution of concentration is shown in Fig. 15. The concentration map shows that the sea ice distribution at minimum extent is well captured. The largest differences between the modelled and observed ice extent occur in the regions where the modelled ice concentration is low and the ice is easily influenced by the wind. Kauker et al. (2009) have shown the shape of the ice extent minimum to be heavily influenced by the wind, but we have not investigated this in our model.

In addition to concentration, Fig. 16 shows the spatial distribution of ice thickness at the beginning of the simulation, in midwinter and at the sea ice minimum. These distributions clearly show the high degree of heterogeneity that appears in the model, despite very smooth initial conditions. The midwinter map shows substantial amounts of fracturing and ridge formation in the Beaufort Gyre and the Transpolar

Drift Stream in particular. This heterogeneity persists until the end of the melt season, even if the melt does smooth it out somewhat.

Overall, the model performs well in terms of total volume, area, and extent. This behaviour is largely controlled by the atmospheric and oceanic forcing. However, a poorly tuned or conceived ice model is still free to diverge considerably from the observed state, and it is reassuring to see that this is not the case here. The only genuine discrepancy between the model results and observations is that the model does not capture the two phases of melting observed in the extent. The model is sensitive to changes in the surface albedo, which is to be expected and albedos are probably the most widely used tuning parameters for ice and ice–ocean models. The model also shows some sensitivity to the lateral melt formulation, which is limited and was not shown. Sensitivity to the oceanic nudging timescale and various dynamical parameters is negligible within reasonable ranges for these parameters. For longer simulations a more sophisticated thermodynamics model is needed though, such as Bitz and Lipscomb (1999) or Winton (2000).

4 Summary and conclusions

In this paper we presented the first comprehensive version of the neXtSIM model, a fully Lagrangian dynamical/thermodynamical model for sea ice. The model is built around the dynamical core previously described in Bouillon and Rampal (2015b). It uses a novel approach to simulate the sea-ice-damaging process and the associated ice cover deformation and mechanical healing.

In order to be able to run simulations for seasonal timescales we have developed and implemented the following numerical and physical components into the model:

- local dynamic remeshing accompanied with an efficient and conservative remapping scheme;
- a thermodynamics model coupled to a slab ocean;
- a healing parameterisation which simulates the restoration of mechanical strength due to refreezing of leads.

In order to evaluate the performance of neXtSIM we used a full Arctic set-up and ran the model for 13 months, starting on 15 September 2008, and using realistic atmospheric forcing. The main evaluation results are as follows:

- the model reproduces the local motion of sea ice that is in free drift well;
- the model also reproduces the drift of the pack ice well, at local (~ 10 km) and large (Arctic-wide) spatial scales, and for daily to seasonal timescales;
- the model captures the observed spatial multi-fractal scaling of sea ice deformation over 3 orders of magni-

tude, from ~ 10 to ~ 1000 km, as well as its variability from winter to summer;

- the model captures the observed intermittency of sea ice deformation over 2 orders of magnitude, from 1 to ~ 100 days;
- the model produces seasonal cycles of sea ice volume, area, and extent that are all in good agreement with observations.

In conclusion, for scales smaller than a year, neXtSIM performs very well with respect to several important metrics related to sea ice dynamics and thermodynamics. We believe that in its current stage of development, neXtSIM may already be a useful tool for both the scientific and engineering communities. For longer timescales and to study the interactions between sea ice and the ocean, ecosystems, or the atmosphere, more developments are needed, especially on the coupling with other components and the use of a more advanced sea ice thermodynamics model.

Data availability

The atmospheric reanalysis data used in this article are available at <http://rda.ucar.edu/datasets/ds631.4/>. The ocean reanalysis data used in this article are available at <http://marine.copernicus.eu/>. The sea ice concentration data sets used in this study are available at <http://osisaf.met.no>, <http://icdc.zmaw.de>, and <https://nsidc.org/data/search/>.

Acknowledgements. We would like to acknowledge T. Williams and P. Griewank for interesting discussions and their contribution to the overall model development. This work was funded by the Research Council of Norway via the SIMech project (no. 231179/F20, 2014–2016), the Oil and Gas Producers (OGP), and TOTAL E&P. This work is the follow-up of research supervised by Jérôme Weiss, David Marsan, and Bernard Barnier at Grenoble and Thierry Fichefet and Vincent Legat at Louvain-la-Neuve. We would like to thank them for their support.

Edited by: G. H. Gudmundsson

References

- Adcroft, A., Campin, J. M., Dutkiewicz, S., Evangelinos, C., Ferreira, D., Forget, G., Fox-Kemper, B., Heimbach, P., Hill, C., Hill, E., Hill, H., Jahn, O., Losch, M., Marshall, J., Maze, G., Menemenlis, D., and Molod, A.: MITgcm User Manual, MIT/EAPS, 467 pp., 2016.
- Amante, C. and Eakins, B. W.: ETOPO1 Global Relief Model converted to PanMap layer format, NOAA – National Geophysical Data Center, doi:10.1594/PANGAEA.769615, 2009.
- Amitrano, D., Grasso, J. R., and Hantz, D.: From diffuse to localised damage through elastic interaction, *Geophys. Res. Lett.*, 26, 2109–2112, 1999.

- Batchelor, G. K.: Diffusion in a field of homogeneous turbulence, *Math. Proc. Cambridge*, 48, 345–362, doi:10.1017/S0305004100027687, 1952.
- Bitz, C. M. and Lipscomb, W. H.: An energy-conserving thermodynamic model of sea ice, *J. Geophys. Res.*, 104, 15669–15678, 1999.
- Bouillon, S. and Rampal, P.: On producing sea ice deformation data sets from SAR-derived sea ice motion, *The Cryosphere*, 9, 663–673, doi:10.5194/tc-9-663-2015, 2015a.
- Bouillon, S. and Rampal, P.: Presentation of the dynamical core of neXtSIM, a new sea ice model, *Ocean Model.*, 91, 23–37, 2015b.
- Bromwich, D., Bai, L., Hines, K., Wang, S., Liu, Z., Lin, H., Kuo, Y., and Barlage, M.: Arctic System Reanalysis (ASR) Project. Research Data Archive at the National Center for Atmospheric Research, Computational and Information Systems Laboratory, doi:10.5065/D6K072B5, 2012.
- Bromwich, D. H., Wilson, A. B., Bai, L., Moore, G. W. K., and Bauer, P.: A comparison of the regional Arctic System Reanalysis and the global ERA-Interim Reanalysis for the Arctic, *Q. J. Roy. Meteorol. Soc.*, 142, 644–658, doi:10.1002/qj.2527, 2016.
- Buck, A. L.: New Equations for Computing Vapor Pressure and Enhancement Factor, *J. Appl. Meteorol.*, 1527–1532, 1981.
- Cavaleri, D. J., Parkinson, C. L., Gloersen, P., and Zwally, H.: Sea Ice Concentrations from Nimbus-7 SMMR and DMSP SSM/I-SSMIS Passive Microwave Data, doi:10.5067/8GQ8LZQVLOVL, updated yearly, 1996.
- Comiso, J. C.: Bootstrap Sea Ice Concentrations from Nimbus-7 SMMR and DMSP SSM/I-SSMIS, Version 2, doi:10.5067/J6JQLS9EJ5HU, updated 2015, 2000.
- Compère, G., Remacle, J. F., and Marchandise, E.: Transient Mesh Adaptivity with Large Rigid-Body Displacements, in: *Proceedings of the 17th International Meshing Roundtable*, edited by: Garimella, R., Springer, Berlin, 213–230, 2008.
- Compère, G., Remacle, J.-F., Jansson, J., and Hoffman, J.: A mesh adaptation framework for dealing with large deforming meshes, *Int. J. Numer. Meth. Eng.*, 82, 843–867, doi:10.1002/nme.2788, 2009.
- Connolley, W. M., Gregory, J. M., Hunke, E. C., and McLaren, A. J.: On the consistent scaling of terms in the sea-ice dynamics equation, *J. Phys. Oceanogr.*, 34, 1776–1780, 2004.
- Coon, M. D., Maykut, G. A., Pritchard, R. S., Rothrock, D. A., and Thorndike, A. S.: Modeling the pack ice as an elastic plastic material, *AIDJEX Bull.*, 24, 1–105, 1974.
- Copernicus Marine environment monitoring service: Ocean reanalysis data, available at: <http://marine.copernicus.eu/>, last access: 15 July 2015.
- Dansereau, V., Weiss, J., Saramito, P., and Lattes, P.: A Maxwell-Elasto-Brittle rheology for sea ice modelling, *The Cryosphere Discuss.*, doi:10.5194/tc-2015-200, in review, 2016.
- Dee, D. P., Uppala, S. M., Simmons, A. J., Berrisford, P., Poli, P., Kobayashi, S., Andrae, U., Balmaseda, M. A., Balsamo, G., Bauer, P., Bechtold, P., Beljaars, A. C. M., van de Berg, L., Bidlot, J., Bormann, N., Delsol, C., Dragani, R., Fuentes, M., Geer, A. J., Haimberger, L., Healy, S. B., Hersbach, H., Hólm, E. V., Isaksen, I., Kållberg, P., Köhler, M., Matricardi, M., McNally, A. P., Monge-Sanz, B. M., Morcrette, J. J., Park, B. K., Peubey, C., de Rosnay, P., Tavolato, C., Thépaut, J. N., and Vitart, F.: The ERA-Interim reanalysis: configuration and performance of the data assimilation system, *Q. J. Roy. Meteorol. Soc.*, 137, 553–597, 2011.
- Ebert, E. E. and Curry, J. A.: An intermediate one-dimensional thermodynamic sea ice model for investigating ice–atmosphere interactions, *J. Geophys. Res.*, 98, 10085–10109, 1993.
- EUMETSAT Ocean and Sea Ice Satellite Application Facility: Global sea ice concentration reprocessing dataset 1978–2015 (v1.2), available at: <http://osisaf.met.no>, last access: 1 June 2015.
- Gill, A. E.: *Atmosphere-Ocean Dynamics*, International Geophysics Series, Academic Press, London, 1982.
- Girard, L., Weiss, J., Molines, J. M., Barnier, B., and Bouillon, S.: Evaluation of high-resolution sea ice models on the basis of statistical and scaling properties of Arctic sea ice drift and deformation, *J. Geophys. Res.*, 114, C08015, doi:10.1029/2008JC005182, 2009.
- Girard, L., Bouillon, S., Weiss, J., Amitrano, D., Fichet, T., and Legat, V.: A new modelling framework for sea ice mechanics based on elasto-brittle rheology, *Ann. Glaciol.*, 52, 123–132, 2011.
- Hecht, F.: BAMG: bidimensional anisotropic mesh generator, INRIA, Rocquencourt, France, 1998.
- Herman, A.: Discrete-Element bonded-particle Sea Ice model DE-SIgn, version 1.3a – model description and implementation, *Geosci. Model Dev.*, 9, 1219–1241, doi:10.5194/gmd-9-1219-2016, 2016.
- Hibler, W.: Ice Dynamics, in: *The Geophysics of Sea Ice*, edited by: Untersteiner, N., NATO ASI Series, Springer US, New York, 577–640, doi:10.1007/978-1-4899-5352-0_10, 1986.
- Hibler, W. D.: A dynamic thermodynamic sea ice model, *J. Phys. Oceanogr.*, 9, 817–846, 1979.
- Hopkins, M. A.: A discrete element Lagrangian sea ice model, *Eng. Comput.*, 21, 409–421, doi:10.1108/02644400410519857, 2004.
- Hunke, E. C. and Dukowicz, J. K.: An elastic-viscous-plastic model for sea ice dynamics, *J. Phys. Oceanogr.*, 27, 1849–1867, 1997.
- Hunke, E. C., Lipscomb, W. H., Turner, A. K., Jeffery, N., and Elliott, S.: CICE: the Los Alamos Sea Ice Model Documentation and Software User’s Manual Version 5.1LA-CC-06-012, 5.1 Edn., Los Alamos National Laboratory, Los Alamos, 2015.
- Integrated Climate Data Center – ICDC: Sea ice concentration datasets, available at: <http://icdc.zmaw.de/>, last access: 15 July 2015.
- Ivanova, N., Johannessen, O. M., Pedersen, L. T., and Tonboe, R. T.: Retrieval of Arctic Sea Ice Parameters by Satellite Passive Microwave Sensors: A Comparison of Eleven Sea Ice Concentration Algorithms, *IEEE T. Geosci. Remote*, 1–14, 2014.
- Jakobsson, M., Macnab, R., Mayer, L., Anderson, R., Edwards, M., Hatzky, J., Schenke, H. W., and Johnson, P.: An improved bathymetric portrayal of the Arctic Ocean: Implications for ocean modeling and geological, geophysical and oceanographic analyses, *Geophys. Res. Lett.*, 35, L07602, doi:10.1029/2008GL033520, 2008.
- Kagan, Y. Y.: Fractal dimension of brittle fracture, *J. Nonlinear Sci.*, 1, 1–16, 1991.
- Kagan, Y. Y. and Jackson, D. D.: Long-term earthquake clustering, *Geophys. J. Int.*, 104, 117–133, 1991.
- Kaleschke, L., Lüpkes, C., Vihma, T., Haarpaintner, J., Bochert, A., Hartmann, J., and Heygster, G.: SSM/I Sea Ice Remote Sensing for Mesoscale Ocean-Atmosphere Interaction Analysis, *Can. J. Remote Sens.*, 27, 526–537, 2001.

- Kauker, F., Kaminski, T., Karcher, M., Giering, R., Gerdes, R., and Voßbeck, M.: Adjoint analysis of the 2007 all time Arctic sea-ice minimum, *Geophys. Res. Lett.*, 36, L03707, doi:10.1029/2008GL036323, 103707, 2009.
- Kimmritz, M., Danilov, S., and Losch, M.: On the convergence of the modified elastic–viscous–plastic method for solving the sea ice momentum equation, *J. Comp. Phys.*, 296, 90–100, doi:http://dx.doi.org/10.1016/j.jcp.2015.04.051, 2015.
- Korsnes, R., Souza, S. R., Donangelo, R., Hansen, A., Paczuski, M., and Sneppen, K.: Scaling in fracture and refreezing of sea ice, *Physica A: Statistical Mechanics and its Applications*, 331, 291–296, 2004.
- Kwok, R., Curlander, J. C., McConnell, R., and Pang, S. S.: An Ice Motion Tracking System at the Alaska SAR Facility, *IEEE J. Ocean. Eng.*, 15, 44–54, 1990.
- Kwok, R., Cunningham, G. F., and Pang, S. S.: Fram Strait sea ice outflow, *J. Geophys. Res.*, 109, C01009, doi:10.1029/2003JC001785, 2004.
- Larour, E., Seroussi, H., Morlighem, M., and Rignot, E.: Continental scale, high order, high spatial resolution, ice sheet modelling using the Ice Sheet System Model (ISSM), *J. Geophys. Res.-Earth*, 117, F01022, doi:10.1029/2011JF002140, 2012.
- Lemieux, J. F., Tremblay, B., Sedlacek, J., Tupper, P., Thomas, S., D, H., and Auclair, J. P.: Improving the numerical convergence of viscous-plastic sea ice models with the Jacobian-free Newton-Krylov method, *J. Comp. Phys.*, 229, 2840–2852, 2010.
- Lemieux, J.-F., Tremblay, B. L., Dupont, F., Plante, M., Smith, G. C., and Dumont, D.: A basal stress parameterization for modeling landfast ice, *J. Geophys. Res. Oceans*, 120, 3157–3173, 2015.
- Lu, P., Leppäranta, M., Li, Z., and Cheng, B.: A parameterization of the ice-ocean drag coefficient, *J. Geophys. Res.*, 116, C07019, doi:10.1029/2010JC006878, 2011.
- Lüpkes, C., Gryanik, V. M., Hartmann, J., and Andreas, E. L.: A parametrization, based on sea ice morphology, of the neutral atmospheric drag coefficients for weather prediction and climate models, *J. Geophys. Res.-Atmos.*, 117, D13112, doi:10.1029/2012JD017630, 2012.
- Marsan, D. and Weiss, J.: Space/time coupling in brittle deformation at geophysical scales, *Earth Planet. Sc. Lett.*, 296, 353–359, 2010.
- Marsan, D., Stern, H. L., Lindsay, R., and Weiss, J.: Scale dependence and localization of the deformation of Arctic sea ice, *Phys. Rev. Lett.*, 93, 178501, doi:10.1103/PhysRevLett.93.178501, 2004.
- Maykut, G. A. and Untersteiner, N.: Some results from time-dependent thermodynamic model of sea ice, *J. Geophys. Res.*, 76, 1550–1575, 1971.
- McPhee, M. G.: The Effect of the Oceanic Boundary Layer on the Mean Drift of Pack Ice: Application of a Simple Model, *J. Phys. Oceanogr.*, 9, 388–400, 1979.
- National Snow and Ice Data Center – NSIDC: Data Sets for Researchers, available at: <https://nsidc.org/data/search/>, last access: 15 July 2015.
- Notz, D., Haumann, F. A., Haak, H., Jungclaus, J. H., and Marotzke, J.: Arctic sea-ice evolution as modeled by Max Planck Institute for Meteorology’s Earth system model, *J. Adv. Model. Earth Syst.*, 5, 173–194, doi:10.1002/jame.20016, 2013.
- Ólason, E. and Notz, D.: Drivers of variability in Arctic sea-ice drift speed, *J. Geophys. Res. Oceans*, 119, 5755–5775, doi:10.1002/2014JC009897, 2014.
- Polar Meteorology Group/Byrd Polar Research Center/The Ohio State University: Arctic Systems Reanalysis Model Output Data. Research Data Archive at the National Center for Atmospheric Research, Computational and Information Systems Laboratory, available at: <http://rda.ucar.edu/datasets/ds631.4/> (last access: 1 January 2015), 2012.
- Rabatel, M., Labbé, S., and Weiss, J.: Dynamics of an Assembly of Rigid Ice Floes, *J. Geophys. Res. Oceans*, 120, 5887–5909, doi:10.1002/2015JC010909, 2015.
- Rampal, P., Weiss, J., Marsan, D., Lindsay, R., and Stern, H. L.: Scaling properties of sea ice deformation from buoy dispersion analysis, *J. Geophys. Res.*, 113, C03002, doi:10.1029/2007JC004143, 2008.
- Rampal, P., Weiss, J., and Marsan, D.: Positive trend in the mean speed and deformation rate of Arctic sea ice, 1979–2007, *J. Geophys. Res.*, 114, C05013, doi:10.1029/2008JC005066, 2009.
- Richardson, L. F. and Stommel, H.: Note on eddy diffusion in the sea, *J. Meteorol.*, 5, 238–240, 1948.
- Sakov, P., Counillon, F., Bertino, L., Lisæter, K. A., Oke, P. R., and Korabiev, A.: TOPAZ4: an ocean-sea ice data assimilation system for the North Atlantic and Arctic, *Ocean Sci.*, 8, 633–656, doi:10.5194/os-8-633-2012, 2012.
- Sakov, P., Counillon, F., Bertino, L., Finck, N., and Renkl, C.: Quality Information Document For Arctic Physical Reanalysis Product – EU Copernicus Marine Service, Tech. rep., Bergen, 2015.
- Schreyer, H. L., Sulsky, D., Munday, L. B., Coon, M., and Kwok, R.: Elastic-decohesive constitutive model for sea ice, *J. Geophys. Res.*, 111, C11S26, doi:10.1029/2005JC003334, 2006.
- Schweiger, A., Lindsay, R., Zhang, J., Steele, M., Stern, H., and Kwok, R.: Uncertainty in modeled Arctic sea ice volume, *J. Geophys. Res. Oceans*, 116, C00D06, doi:10.1029/2011JC007084, c00D06, 2011.
- Semtner, A. J.: A model for the thermodynamic growth of sea ice in numerical investigations of climate, *J. Phys. Oceanogr.*, 6, 379–389, 1976.
- Semtner, A. J.: On modelling the seasonal thermodynamic cycle of sea ice in studies of climatic change, *Climatic Change*, 6, 27–37, doi:10.1007/BF00141666, 1984.
- Sirevaag, A., de la Rosa, S., Fer, I., Nicolaus, M., Tjernström, M., and McPhee, M. G.: Mixing, heat fluxes and heat content evolution of the Arctic Ocean mixed layer, *Ocean Sci.*, 7, 335–349, doi:10.5194/os-7-335-2011, 2011.
- Spreen, G., Kaleschke, L., and Heygster, G.: Sea ice remote sensing using AMSR-E 89-GHz channels, *J. Geophys. Res. Oceans*, 113, C02S03, doi:10.1029/2005JC003384, 2008.
- Stern, H. L. and Lindsay, R.: Spatial scaling of Arctic sea ice deformation, *J. Geophys. Res.*, 114, C10017, doi:10.1029/2009JC005380, 2009.
- Sulsky, D., Schreyer, H., Peterson, K., Kwok, R., and Coon, M.: Using the material-point method to model sea ice dynamics, *J. Geophys. Res.*, 112, C02S90, doi:10.1029/2005JC003329, 2007.
- Thorndike, A. S., Rothrock, D. A., Maykut, G. A., and Colony, R.: The thickness distribution of sea ice, *J. Geophys. Res.*, 80, 4501–4513, 1975.

- Tremblay, L. B. and Mysak, L. A.: Modeling sea ice as a granular material, including the dilatancy effect, *J. Phys. Oceanogr.*, 27, 2342–2360, 1997.
- Tsamados, M., Feltham, D. L., and Wilchinsky, A. V.: Impact of a new anisotropic rheology on simulations of Arctic sea ice, *J. Geophys. Res.*, 118, 91–107, doi:10.1029/2012JC007990, 2013.
- Tsamados, M., Feltham, D. L., Schroeder, D., Flocco, D., Farrell, S. L., Kurtz, N., Laxon, S. W., and Bacon, S.: Impact of Variable Atmospheric and Oceanic Form Drag on Simulations of Arctic Sea Ice, *J. Phys. Oceanogr.*, 44, 1329–1353, doi:10.1175/JPO-D-13-0215.1, 2014.
- Turner, A. K., and Hunke, E. C.: Impacts of a mushy-layer thermodynamic approach in global sea-ice simulations using the CICE sea-ice model, *J. Geophys. Res. Oceans*, 120, 1253–1275, doi:10.1002/2014JC010358, 2015.
- Vancoppenolle, M., Fichefet, T., Goosse, H., Bouillon, S., Madec, G., and Morales Maqueda, M. A.: Simulating the mass balance and salinity of Arctic and Antarctic sea ice. 1. Model description and validation, *Ocean Model.*, 27, 33–53, doi:10.1016/j.ocemod.2008.10.005, 2009.
- Wang, L. R. and Ikeda, M.: A Lagrangian description of sea ice dynamics using the finite element method, *Ocean Model.*, 7, 21–38, 2004.
- Warren, S. G., Rigor, I. G., Untersteiner, N., Radionov, V. F., Bryazgin, N. N., Aleksandrov, Y. I., and Colony, R.: Snow Depth on Arctic Sea Ice, *J. Climate*, 12, 1814–1829, doi:10.1175/1520-0442(1999)012<1814:SDOASI>2.0.CO;2, 1999.
- Weiss, J. and Schulson, E. M.: Coulombic faulting from the grain scale to the geophysical scale: Lessons from ice, *J. Phys. D Appl. Phys.*, 42, 214017, doi:10.1088/0022-3727/42/21/214017, 2009.
- Weiss, J., Stern, H. L., and Schulson, E. M.: Sea ice rheology from in-situ, satellite and laboratory observations: Fracture and friction, *Earth Planet. Sc. Lett.*, 255, 1–8, 2007.
- Weiss, J., Marsan, D., and Rampal, P.: Space and time scaling laws induced by the multiscale fracturing of the Arctic sea ice cover, in: IUTAM Symposium on Scaling Laws in Ice Mechanics and Ice Dynamics, Springer Netherlands, 101–109, 2009.
- Wilchinsky, A. V. and Feltham, D.: Modelling the rheology of sea ice as a collection of diamond-shaped oes, *J. Non-Newton Fluid*, 138, 22–32, 2006.
- Winton, M.: A reformulated three-layer sea ice model, *J. Atmos. Ocean. Tech.*, 17, 525–531, 2000.
- Zhang, J. and Rothrock, D.: Modeling global sea ice with a thickness and enthalpy distribution model in generalized curvilinear coordinates, *Mon. Weather Rev.*, 131, 845–861, 2003.
- Zygmuntowska, M., Rampal, P., Ivanova, N., and Smedsrud, L. H.: Uncertainties in Arctic sea ice thickness and volume: new estimates and implications for trends, *The Cryosphere*, 8, 705–720, doi:10.5194/tc-8-705-2014, 2014.