



HAL
open science

Noise-based ballistic wave passive seismic monitoring. Part 1: body waves

F. Brenguier, R Courbis, A. Mordret, X. Campman, P. Boue, M Chmiel, T Takano, T. Lecocq, W van Der Veen, S Postif, et al.

► To cite this version:

F. Brenguier, R Courbis, A. Mordret, X. Campman, P. Boue, et al.. Noise-based ballistic wave passive seismic monitoring. Part 1: body waves. *Geophysical Journal International*, 2020, 221 (1), pp.683 - 691. 10.1093/gji/ggz440 . hal-02928279

HAL Id: hal-02928279

<https://hal.univ-grenoble-alpes.fr/hal-02928279v1>

Submitted on 2 Sep 2020

HAL is a multi-disciplinary open access archive for the deposit and dissemination of scientific research documents, whether they are published or not. The documents may come from teaching and research institutions in France or abroad, or from public or private research centers.

L'archive ouverte pluridisciplinaire **HAL**, est destinée au dépôt et à la diffusion de documents scientifiques de niveau recherche, publiés ou non, émanant des établissements d'enseignement et de recherche français ou étrangers, des laboratoires publics ou privés.

Noise-based ballistic wave passive seismic monitoring. Part 1: body waves

F. Brenguier^{1b},¹ R. Courbis,^{1,4} A. Mordret^{1b},² X. Campman,³ P. Boué,¹ M. Chmiel,^{1,4} T. Takano,^{1,5} T. Lecocq,⁶ W. Van der Veen,⁷ S. Postif³ and D. Hollis⁴

¹Univ. Grenoble Alpes, Institut des Sciences de la Terre, Grenoble, France. E-mail: florent.brenguier@univ-grenoble-alpes.fr

²Massachusetts Institute of Technology, Department of Earth, Atmospheric, and Planetary Sciences, Cambridge, US

³Shell, Amsterdam, The Netherlands

⁴Sisprobe, Grenoble, France

⁵Tohoku University, Solid Earth Physics Laboratory, Sendai, Japan

⁶Royal Observatory of Belgium, Brussels, Belgium

⁷Nederlandse Aardolie Maatschappij, Assen, The Netherlands

Accepted 2019 October 3. Received 2019 September 24; in original form 2018 November 13

SUMMARY

Unveiling the mechanisms of earthquake and volcanic eruption preparation requires improving our ability to monitor the rock mass response to transient stress perturbations at depth. The standard passive monitoring seismic interferometry technique based on coda waves is robust but recovering accurate and properly localized *P*- and *S*-wave velocity temporal anomalies at depth is intrinsically limited by the complexity of scattered, diffracted waves. In order to mitigate this limitation, we propose a complementary, novel, passive seismic monitoring approach based on detecting weak temporal changes of velocities of ballistic waves recovered from seismic noise correlations. This new technique requires dense arrays of seismic sensors in order to circumvent the bias linked to the intrinsic high sensitivity of ballistic waves recovered from noise correlations to changes in the noise source properties. In this work we use a dense network of 417 seismometers in the Groningen area of the Netherlands, one of Europe's largest gas fields. Over the course of 1 month our results show a 1.5 per cent apparent velocity increase of the *P* wave refracted at the basement of the 700-m-thick sedimentary cover. We interpret this unexpected high value of velocity increase for the refracted wave as being induced by a loading effect associated with rainfall activity and possibly canal drainage at surface. We also observe a 0.25 per cent velocity decrease for the direct *P*-wave travelling in the near-surface sediments and conclude that it might be partially biased by changes in time in the noise source properties even though it appears to be consistent with complementary results based on ballistic surface waves presented in a companion paper and interpreted as a pore pressure diffusion effect following a strong rainfall episode. The perspective of applying this new technique to detect continuous localized variations of seismic velocity perturbations at a few kilometres depth paves the way for improved *in situ* earthquake, volcano and producing reservoir monitoring.

Key words: Seismic interferometry; Body waves; Seismic noise; Wave propagation.

1 INTRODUCTION

Large earthquakes and volcanic eruptions result from long-lasting, steady, pressure buildup on faults and magmatic reservoirs. However, the triggering mechanisms of impending events are thought to be initiated by short timescale stress and pore pressure transients associated with tectonic and volcanic interactions (e.g. Bouchon *et al.* 2011; Brenguier *et al.* 2014; Khoshmanesh & Shirzaei 2018) and possibly environmental perturbations (e.g. Johnson *et al.* 2017).

Anthropogenic activities such as hydrocarbon extraction, wastewater disposal, CO₂ storage and geothermal production also induce fluid pore-pressure related deformation that can lead to the triggering of induced seismicity (Talwani *et al.* 2007; Ellsworth 2013; Chang & Segall 2016). Monitoring these stress and pore-pressure perturbations continuously in time with high spatial accuracy at depth is thus critical to foresee forthcoming catastrophic tectonic and volcanic events and to improve reservoir management.

Seismic velocities are sensitive to stress and pore-pressure perturbations. This has been described *in situ* for a wide range of processes like for example solid earth tides (Takano *et al.* 2014) and rainfall induced pore-pressure changes (Wang *et al.* 2017). Niu *et al.* (2008) used active seismic source monitoring in boreholes at 1 km depth along the San Andreas Fault and were able to observe the first clear preseismic seismic velocity–stress perturbations in the hours preceding the occurrence of nearby earthquakes. Although convincing, these observations have never been reproduced due to the costly and logistically complicated *in situ* experiment.

Over the last decade, passive noise-based seismic monitoring proved success for monitoring volcanoes (Sens-Schönfelder & Wegler 2006; Brenguier *et al.* 2008a; Donaldson *et al.* 2017), earthquakes (Brenguier *et al.* 2008b) and environmental/climate (Lecocq *et al.* 2017) changes. Even though some attempts were made, no one succeeded in using passive seismic monitoring to observe clear preseismic anomalies similar to those described by Niu *et al.* (2008). The standard coda-based technique suffers from shortcomings that limit our ability to detect localized seismic velocity perturbations at depth. This technique also referred to as coda-wave interferometry (Poupinet *et al.* 1984) has the advantage of being very stable thanks to its low sensitivity to noise source property changes (Colombi *et al.* 2014). It thus allows detecting weak temporal changes of seismic velocities as small as 0.01 per cent such as those associated with solid Earth tides for example (Mao *et al.* 2019). However, the counterpart of this high detection capability is that the complexity of coda-wave propagation limits our ability to precisely characterize both the type (*P* or *S*) of velocity change and accurate estimates of their spatial distribution at depth.

In this work, we propose a complementary monitoring approach that uses ballistic waves reconstructed from noise correlations. This paper focuses on ballistic body waves and the companion paper Mordret *et al.* 2019 focuses on using ballistic surface waves on the same data set with the same type of approach. Body waves have a specific sensitivity to seismic velocity changes at depth and are potentially less affected by near-surface environmental changes than surface waves. By using ballistic waves instead of coda waves, we can more easily model the spatial sensitivity of the temporal change observations to local velocity perturbations at depth. The drawback of using direct, ballistic body waves instead of coda waves is their strong sensitivity to noise source temporal variations (Colombi *et al.* 2014). We use dense seismic networks and azimuthal averaging to circumvent this issue but still need to carefully analyse the stability of noise sources for such type of analysis.

Different studies showed that body-wave extraction from noise correlations is possible at various scales (Roux *et al.* 2005; Draganov *et al.* 2009; Poli *et al.* 2012). Nakata *et al.* (2015) were able to implement the first passive 3-D *P*-wave velocity tomography from continuous ground motion recorded on a dense array of more than 2500 seismic sensors installed at Long Beach (CA, USA). Recently Brenguier *et al.* (2016) and Nakata *et al.* (2016) proved the temporal stability of direct virtual body waves between dense arrays on Piton de la Fournaise volcano thus opening the way for continuous, passive ballistic wave monitoring. Brenguier *et al.* 2019 assess that the seismic noise emitted by heavy freight train traffic can be used to reconstruct repetitive virtual sources of body waves for monitoring the shallow crust at a few kilometres depth with a specific focus on the San Andreas Fault.

In this paper, we describe the fundamental aspects of passive ballistic wave monitoring using dense arrays and further illustrate its potential by applying it to a network of 417 seismic stations in the Netherlands. We are able to measure temporal changes

of apparent velocities from both direct and refracted *P* waves, and thus we are able to separate the response of the near surface sediments and the basement located at 700 m depth. By providing direct observations of the rock mass response to stress changes at depth, this new passive seismic approach paves the way for improved *in situ* earthquake, volcano and producing reservoir monitoring.

2 METHODS

The new approach is based on measuring temporal changes of apparent slowness of specific ballistic waves that have been reconstructed from noise correlations using dense arrays of seismic sensors (Boué *et al.* 2013b; Mordret *et al.* 2014; Nakata *et al.* 2015, 2016). The underlying requirement is that, as for Nakata *et al.* (2015), the high number of seismic sensors (> 100) and thus of noise correlation receiver pairs allows for the reconstruction of a virtual shot-gather of sufficiently high quality to be able to isolate and measure the apparent velocity of ballistic waves such as direct *P* or *S* waves, refracted waves or surface waves with clear mode separation (Mordret *et al.* 2019).

For this purpose of properly extracting high quality ballistic waves, we gather all possible noise correlations for all receiver pairs from a dense network into a single seismic panel (propagation time versus virtual source–receiver offset) thus considering a 1-D velocity model for which the apparent slowness of a reconstructed ballistic wave measured at surface can be written as:

$$n = \frac{1}{V} = \frac{\Delta_x t}{\Delta x} \quad (1)$$

where n is the apparent slowness and V the apparent velocity. We can estimate n as the slope of apparent arrival times t along distance x under the assumption that the apparent velocity V is uniform along distance range Δx . We are now interested in measuring a temporal change in apparent slowness $\Delta_{Ct}n$, the index Ct being for Calendar time (Fig. 1a):

$$\Delta_{Ct}n = n_{Ct2} - n_{Ct1} = \left(\frac{\Delta_x t}{\Delta x} \right)_{Ct2} - \left(\frac{\Delta_x t}{\Delta x} \right)_{Ct1}. \quad (2)$$

The temporal change of apparent slowness can be measured directly as the difference of slowness estimates (from a slant-stack or beam-forming analysis for example) at different calendar times (de Cacqueray *et al.* 2016). Here we use an approach that estimates the temporal change of apparent slowness as the slope of the linear regression of the traveltimes shifts at different calendar times for each distance offset along distance Δx (Fig. 1b):

$$\Delta_{Ct}n = \frac{\Delta_x (\Delta_{Ct}t)}{\Delta x}, \quad (3)$$

where $\Delta_{Ct}t$ are the measurements of traveltimes shifts at different offsets Δx for two different calendar times and for a specific windowed ballistic wave. This approach shows the advantage of providing a direct estimate of the uncertainty of the estimated apparent slowness temporal change by assessing how the measured traveltimes delays $\Delta_{Ct}t$ fit a linear regression model along distance range Δx . The deviation of traveltimes shifts, $\Delta_{Ct}t$, to a linear trend along distance Δx can be explained by both noise affecting the reconstructed body waves and lateral variability of seismic velocity temporal changes that we do not account for in our 1-D approximated model.

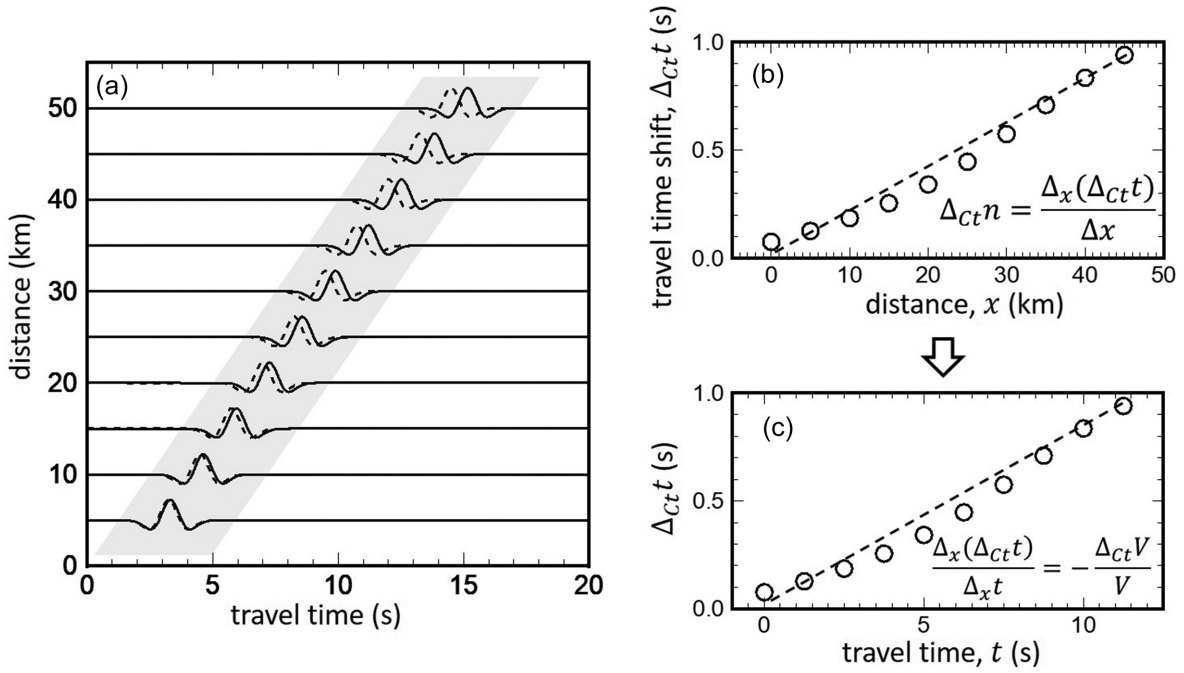


Figure 1. Procedure for ballistic-wave apparent seismic velocity monitoring. (a) Propagation of a direct ballistic wave. The dashed lines show the reference wave and the plain lines show the wave affected by a velocity perturbation of -7 per cent. (b) Traveltime shifts measurements and linear regression along distance. (c) conversion from distance to traveltimes by dividing distance by V , the apparent velocity of the propagating wave.

From eq. (2), we can derive the relation linking the temporal change of apparent slowness and apparent velocity:

$$\Delta_{Ct}n = \frac{\Delta_{Ct}V}{V^2}. \quad (4)$$

By multiplying the above equation by V , the apparent uniform velocity of the studied ballistic wave, this equation leads to (Fig 1c):

$$\Delta_{Ct}n \times V = \frac{\Delta_x(\Delta_{Ct}t)}{\Delta_x t} = -\frac{\Delta_{Ct}V}{V}. \quad (5)$$

This later equation shows that, for small velocity perturbations (<10 per cent) we can estimate the relative temporal change of apparent velocity, $\frac{\Delta_{Ct}V}{V}$, of a given ballistic wave by estimating the value of the slope of the linear regression of $\Delta_{Ct}t$ measurements along traveltime t . This approach is sketched on Fig. 1. It applies to any kind of ballistic arrivals that can be clearly identified and isolated on a virtual source gather section. The case of direct surface waves requires mode separation and is challenging because of dispersion that leads to different velocities for different periods at which $\Delta_{Ct}t$ values are measured (Mordret *et al.* 2019). As suggested in Nakata *et al.* (2016) and Brenguier *et al.* (2019), this approach can also be applied to noise-correlations between two distant arrays in order to monitor diving body waves probing magmatic reservoirs, seismic faults or producing reservoirs at a few hundreds to a few kilometres depth. It is interesting to note that in this situation of two distant arrays referred to as A and B, the estimates of temporal changes of apparent velocities can be achieved using noise-correlations between arrays A and B and B and A separately, thus providing two independent estimates of temporal velocity changes. This method can also be applied using noise correlations between an individual seismic station and a distant array. In this work we apply this approach to the monitoring of a direct and a refracted wave using noise-correlations within a single array of about 8 km wide.

3 DATA

The Groningen gas field located in the northeast of the Netherlands is one of Europe's largest natural gas field. The reservoir located at 3 km depth is thought to be 40 by 50 km wide and 250 m thick. Bourne *et al.* (2018) show that the gas production in this field led to a 15 MPa average reservoir pore-pressure depletion since 1995 which is associated with seismicity rates that increased as an exponential-like function.

We use a network of 417 short period seismic stations deployed in the Groningen area of the Netherlands (Fig. 2) from 11 February (day 42) to 12 March (day 71) 2017 over a time span of 30 d. The network forms a grid array with aperture of the order of 8 km and an average station distance of about 400 m.

We computed an averaged seismic section of vertical to vertical noise cross-correlations. The noise-correlations were stacked in time (over the 30 d of continuous data), in space (along distance bins of 50 m long) and for the causal and acausal parts following Boué *et al.* (2013a) and Nakata *et al.* (2015). Fig. 3 illustrates these binned data for two different frequency ranges (1–3 Hz and 3–12 Hz). The low frequency (1–3 Hz) section mainly shows the propagation of low-velocity Rayleigh waves and also of ballistic P waves at velocities between 1.5 and 3 km s^{-1} . The lower panel of Fig. 3 highlights the high frequency (3–12 Hz) P waves interpreted as (1) the direct, diving P wave with velocity of ~ 1700 m s^{-1} (see model on the right panel) contoured by a blue box and (2) a refracted wave at the 700 m interface with apparent velocity of ~ 3300 m s^{-1} contoured by a red box. Thanks to the high stability in time of the useful high-frequency ambient seismic noise, we are finally able to reconstruct repetitive in time seismic sections from the correlations of daily records of ambient seismic noise leading us to daily virtual shot seismic gathers.

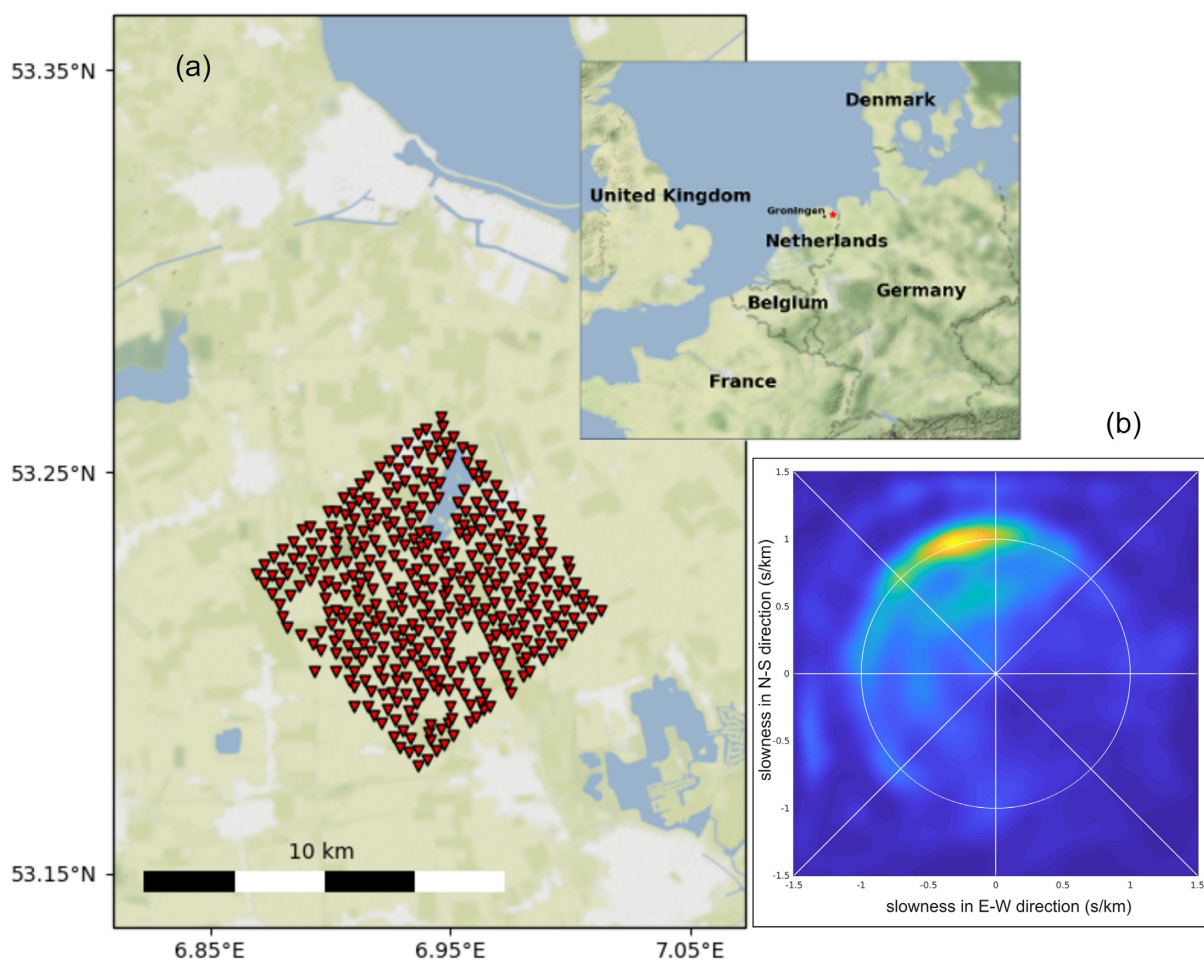


Figure 2. (a) Geometry of the 417 short-period stations used in this study. (b) beamforming of the 30 d of continuous seismic data in the 1–4-s period range. The white circle represents the isovalue of slowness at 1 s km^{-1} .

4 ANALYSIS AND RESULTS

In order to measure temporal changes, we further isolate the direct and refracted waves by applying a tapered window (Figs 4a and b). For the time shift measurements, $\Delta_{C,t}$, we use a cross-spectrum approach (Clarke *et al.* 2011) in the frequency range 3–8 Hz (best signal to noise ratio). We illustrate our approach on Fig. 4 by plotting traveltimes shifts for the direct (left-hand panel) and refracted (right-hand panel) waves measured using reference body waves stacked from days 42 to 50 and current body waves stacked from days 53 to 62 for the direct and days 48 to 57 for the refracted waves. Even though the traveltimes shift measurements show large fluctuations likely associated with imperfect direct and refracted waves reconstruction and noise source changes through time, they show a clear linear trend along distance, especially for the refracted wave, indicating a clear change in apparent velocity between these two time periods. By multiplying the slopes of the linear regressions of the $\Delta_{C,t}$ over distance measurements by the apparent velocities for both the direct (1700 m s^{-1}) and refracted (3300 m s^{-1}) waves (step b to c on Fig. 1), we find velocity changes of -0.25 and $+1.5$ per cent for the direct and refracted waves, respectively.

In order to gain insights on the temporal evolution of velocity changes, we further average the daily seismic sections using a 10-d long, 1-d moving window. This leads us to 21, full 10-d averaged, daily seismic sections (from days 42 to 71). Following the method described above, we measure velocity changes ($\frac{\Delta_{C,t} V}{V}$)

between each 10-d averaged seismic section and the reference section corresponding to a stack of days 42–50 for both the direct (Fig. 5a) and refracted (Fig. 5b) waves. The apparent velocity change curves shown on Fig. 5 indicate a velocity decrease of maximum -0.25 per cent for the direct wave and a velocity increase of maximum 1.5 per cent for the refracted wave. The error bars correspond to the uncertainty of the linear regressions estimates of the traveltimes shifts, $\Delta_{C,t}$, over traveltimes t (Fig. 1c) using a least-square approach following Brenguier *et al.* (2008a).

5 THE NOISE STATIONARITY PROBLEM

The most common source of error in passive, noise-based seismic monitoring results from the non-stationarity of noise sources. Furthermore, ballistic waves are much more sensitive to noise source variations than coda waves (Colombi *et al.* 2014). As a result, the main drawback of this ballistic wave based monitoring method is the potential error introduced by changes in noise sources and great care has to be taken when interpreting the results. We thus need to properly assess how noise source temporal azimuthal variations can hamper our results. Due to the minimum interstation distance of 300 m we are not able to beamform the noise in the frequency range of interest (3–8 Hz) and can only beamform the 1–4 s period range. The average over 1-month beamforming result of Fig. 2(b)

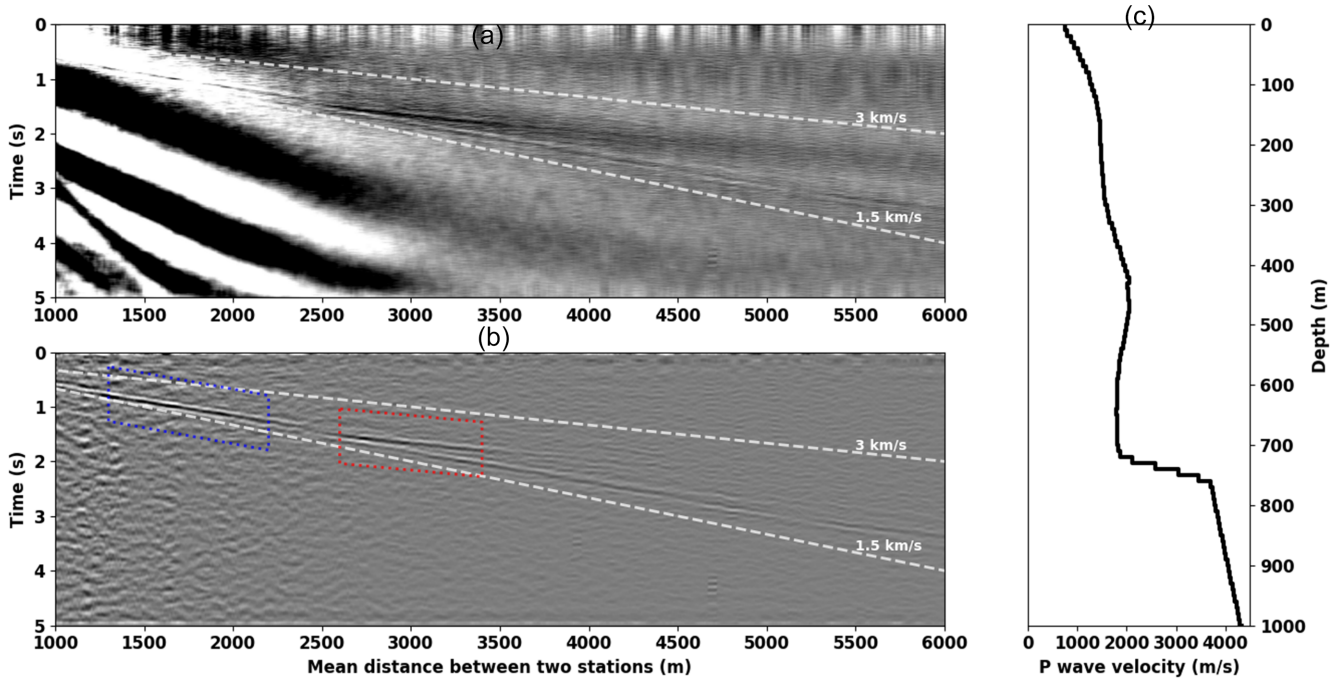


Figure 3. Noise cross-correlation averaged binned section for frequency ranges 1–3 Hz (a) and 3–12 Hz (b). The blue and red dashed boxes correspond to the selected windows used for the analysis for the direct and refracted waves. The right panel (c) illustrates the average *P*-wave velocity model of the area illustrating the velocities of the overburden (saturated sediments) around 1700 m s⁻¹ and of the bedrock at ~700 m depth around 3000 m s⁻¹. It has been defined using sonic logs from deep wells in the area (Kruiver *et al.* 2017).

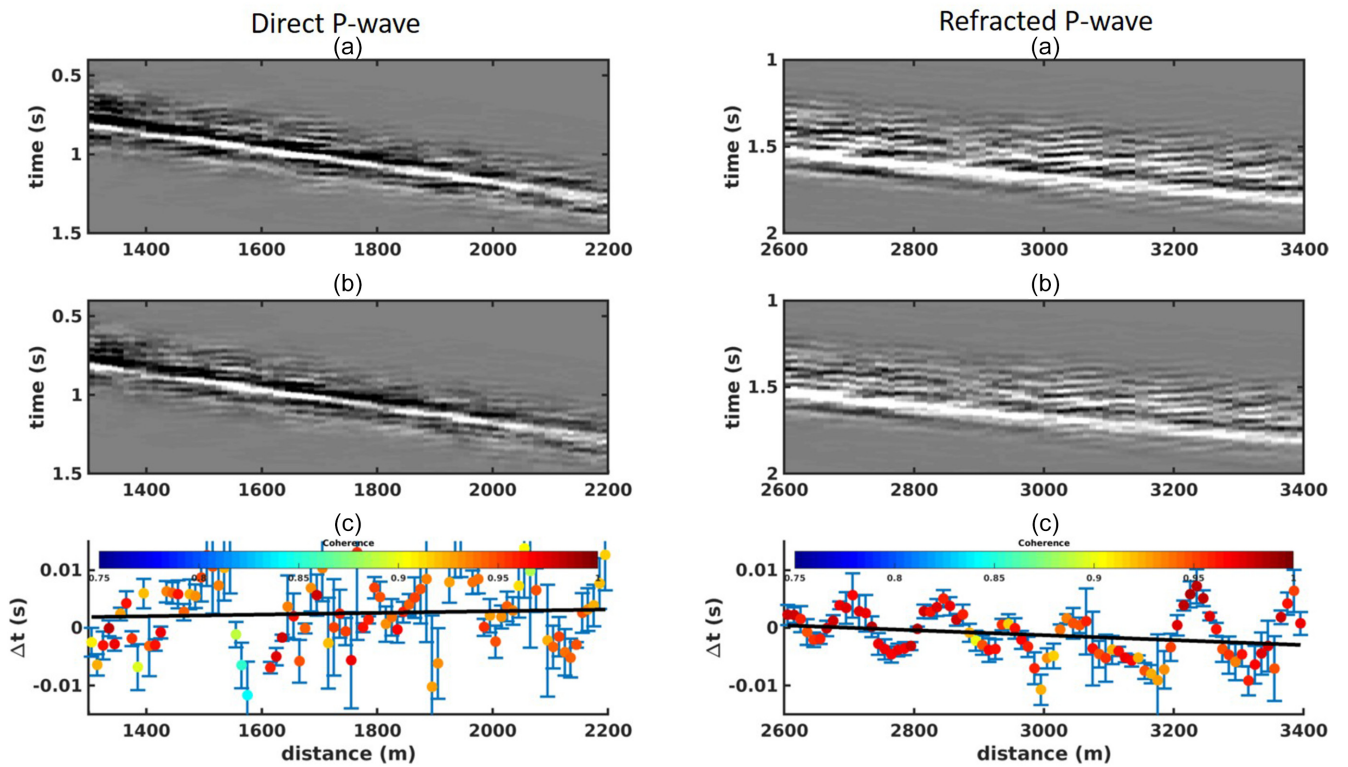


Figure 4. Traveltimes along distance plots. Left-hand panel (a), windowed reference direct waves averaged for the time period (days 42–50). (b) Windowed current direct waves averaged for days 53–62. (c) Traveltimes shift measurements, ΔC_{It} , along distance between these two direct waves. Right-hand panel (a), windowed reference refracted waves averaged for the time period (days 42–50). (b) windowed current refracted waves averaged for days 48–57. (c) Traveltimes shift measurements, ΔC_{It} , along distance between these two refracted waves. The oscillations in ΔC_{It} could be related to improper reconstruction of body waves controlled by the number of stacked correlations per distance bin that fluctuates between 2500 and 3500 (Fig. 6, middle).

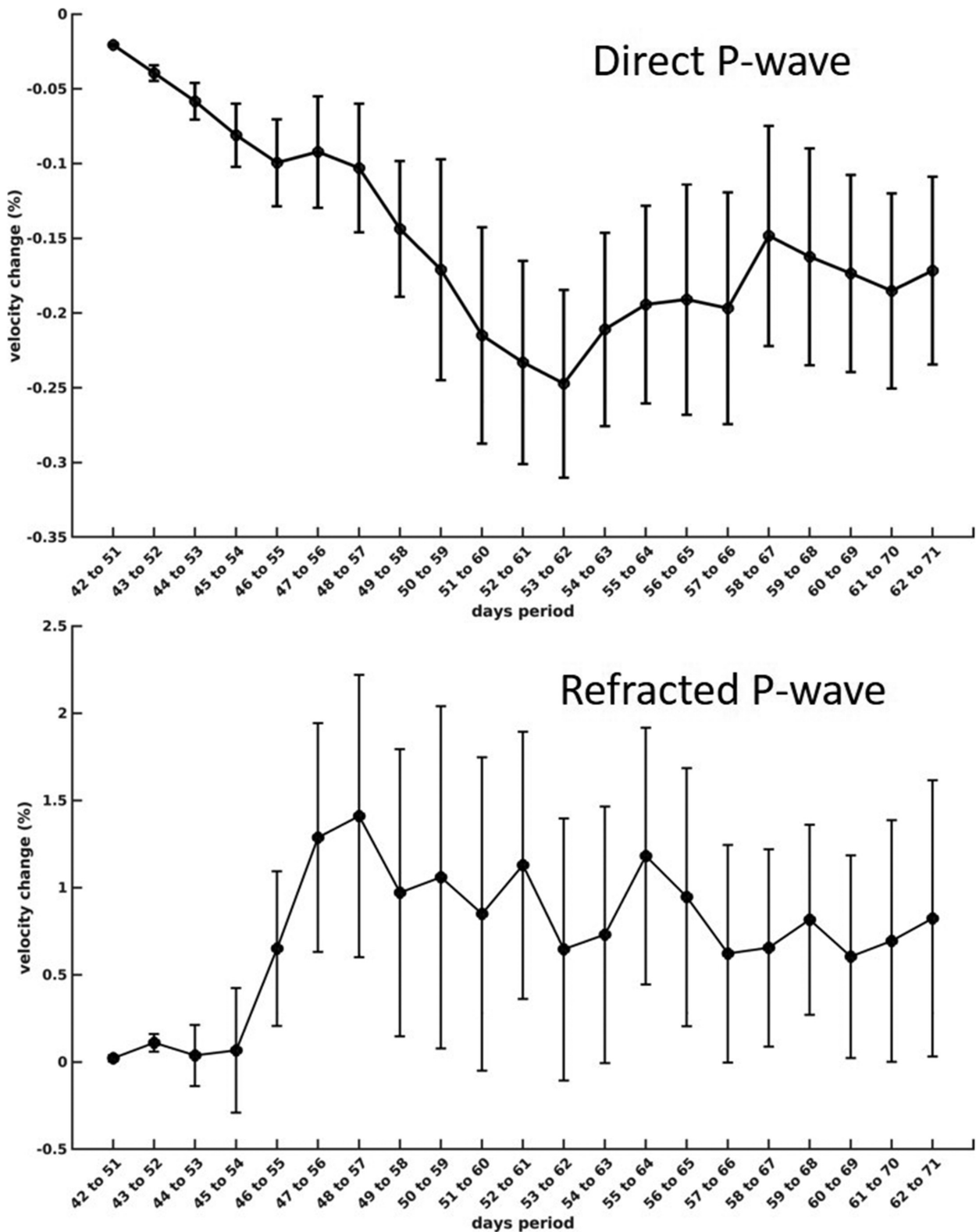


Figure 5. Apparent seismic velocity temporal changes for both the direct (top panel) and refracted (bottom panel) waves.

shows that the noise source distribution is strongly anisotropic with a main spot coming from the North Sea, north of our array (Fig. 2). To study the HF (3–8 Hz) noise azimuthal distribution, we sort all noise correlations by azimuth (Fig. 6). On this figure, we observe

that the HF body waves are best reconstructed for azimuth ranging from 120° to 240° meaning that the useful noise comes from the north which is in agreement with the 1–4 s beamforming observations. By looking in more details though, the 1–4 s beamforming

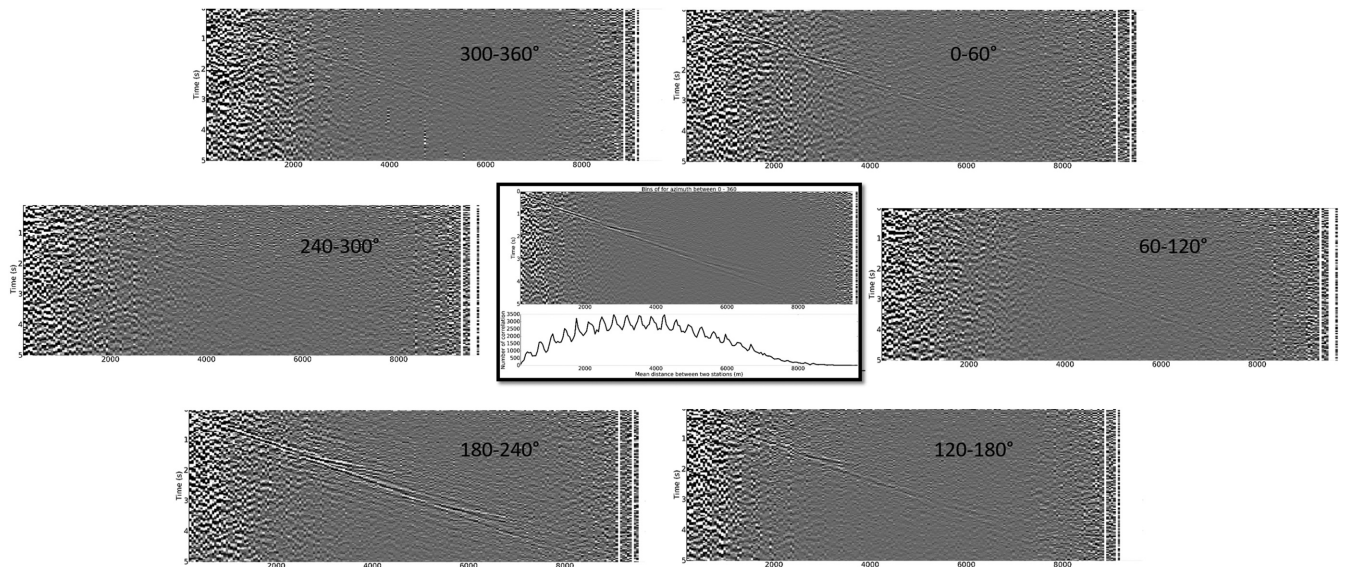


Figure 6. Noise correlation sections sorted by azimuth (3–12 Hz). 180–240° for example means that the noise contributing to the HF body waves reconstruction come from the northeast. The middle section corresponds to the stack of all azimuths similarly to Fig. 3(b). The bottom panel of the middle section shows the number of station pairs stacked per distance bin of 50 m long.

points towards a dominant source northwest of the array and the azimuthally sorted correlations rather to a dominant source northeast of the array (best section is 180–240°). The noise in these two frequency ranges could thus be related to ocean activity and shore break but it is also possible that these noise sources have different origins with the 1–4 s noise being related to oceanic activity and the high frequency noise possibly coming from vehicle traffic from the city of Delfzijl located about 10 km north of the study area (Brenquier *et al.* 2019).

Our assumption of comparing the high-frequency (3–8 Hz) to the low-frequency (1–4 s) noise sources might not be relevant but still informative. To study the stationarity of noise sources in the 1–4 s period range we beamform the ambient seismic noise on a 10-d average basis. We observe that during the time span of our analysis, the noise source distribution in the 1–4 s period range is mostly stable with small azimuthal variations of the centroid of the main spot by less than 10°. We believe this is a good approximation for the upper limit of the noise source azimuthal variability for the high frequency range of 3–8 Hz. Indeed, vehicle traffic would probably have an even smaller range of spatial variations on a 10-d basis since the road and railway network is slightly modified over such timescales. Considering 10° of noise azimuthal variations and the theoretical predictions of traveltimes errors of ballistic arrival reconstructed from correlations of non-isotropically distributed noise sources from Weaver *et al.* (2009) and the further applications of Froment *et al.* (2010) and Colombi *et al.* (2014), we assess that, in case of a two sensors noise correlation, the error on the traveltimes shift measurements (Fig. 5) would lead to a velocity change uncertainty of less than 0.5 per cent. In our case we emphasize that our traveltimes shift measurements are obtained from azimuthally averaged noise correlations from the dense 417 stations array. We are thus confident that the observed velocity changes of +.5 per cent for the refracted wave is mostly related to physical velocity changes. However, the velocity decrease of 0.25 per cent for the direct wave might thus be partly biased by changes in the noise source properties.

6 INTERPRETATION AND CONCLUSIONS

In order to interpret the apparent velocity change of –0.25 per cent of the direct *P* wave, we can consider a simple 1-D model of wave propagation in the sedimentary cover and the ray theory that predicts that the observed apparent velocity change on the direct *P* wave corresponds to a real *P*-wave velocity perturbation averaged over the first 200 m depth (maximum distance between virtual source and stations of 2200 m). The only notable event during that time period is an episode of rainfall starting on day 51 in the region (40 mm of cumulated water height in 3 d). The decrease of velocity for the direct wave could thus be related to process of pore pressure diffusion as described by Rivet *et al.* (2015) and Wang *et al.* (2017). This interpretation is in good agreement with results from the companion paper Mordret *et al.* (2019) that uses ballistic surface waves obtained from noise correlations to monitor the shallow subsurface sediments. They find a clear *S*-wave velocity decrease following the rainfall episode starting day 51 that migrates at depth at a rate of 10 m per day down to 200 m.

Following again the ray theory, the increase of apparent velocity of 1.5 per cent for the refracted wave can be directly attributed to a change of *P*-wave velocity of the carbonate bedrock at 700 m depth. We checked for INSAR and GPS observations. These data do not show any clear transient anomalies during the time span of our analysis. We preclude the potential effects of swings in gas production in the main reservoir at 3 km depth below our study area due to the large distance to the probed carbonate layer. These induced pressure variations are of the order of less than 0.1 MPa locally and are thus too small to potentially induce a 1.5 per cent velocity increase 2.3 km above in the carbonate layer. We also rule out the effects of local induced earthquakes due to the low level of seismicity during the studied time period.

Considering this hypothesis of a bedrock velocity increase, one simple interpretation could be the effect of loading from rainfall on the bedrock that would increase the confining pressure and close cracks in the bedrock. However, it is unlikely that 4 cm of additional

water height on days 51–53, corresponding to an increase of loading of 0.4 kPa, leads to a velocity increase of 1.6 per cent at 700 m depth. Indeed, following Yamamura *et al.* (2003) and Silver *et al.* (2007), and considering a high velocity–stress sensitivity of 10^{-6} Pa^{-1} , the expected velocity change for a loading of 0.4 kPa should be about 0.04 per cent. There are three possible reasons for explaining this discrepancy. First, considering the error bars on Fig. 5, it is possible that the velocity increase for the *P*-refracted wave is smaller than 1.5 per cent. Secondly, considering that the carbonate bedrock is fully saturated, it is possible that its velocity–stress sensitivity is actually larger than 10^{-6} Pa^{-1} . A large stress sensitivity value could be explained by high fluid pressure in this layer that reduces the effective confining pressure. And finally, it is possible that the average load on the study area is more than an equivalent of 4 cm of rainfall, possibly due to higher average precipitation on the area than the one locally measured. Canal drainage water flows could also be responsible for this increased load.

In conclusions, even though our results are hampered by high uncertainties and are spanning a too short period to be interpreted properly, we believe that this new passive monitoring approach has the potential for revealing seismic wave velocity temporal variations at localized areas at depth thus acting as a stress–strain probe. Even though the main drawback of this approach is its sensitivity to noise source changes and its requirement for dense seismic networks, we believe that future studies of the noise source bias effect together with recent step changes in seismic instrumentation (low cost sensors, Distributed Acoustic Sensing) will lead to groundbreaking advances in our understanding of natural and induced earthquakes, volcanic eruptions and will prove useful for reservoir management.

ACKNOWLEDGEMENTS

We acknowledge the anonymous reviewers for their useful comments. This project received funding from the Shell Game Changer project HiProbe. We also acknowledge support from the French ANR grant T-ERC 2018, (FaultProbe), the European Research Council under grants no. 817803, FAULTSCAN and no. 742335, F-IMAGE and the European Union's Horizon 2020 research and innovation program under grant agreement No 776622 (PACIFIC). AM acknowledges support from the National Science Foundation grants PLR-1643761. The data were provided by NAM (Nederlandse Aardolie Maatschappij). We acknowledge M. Campillo, N. Shapiro, G. Olivier, P. Roux, S. Garambois, R. Brossier and C. Voisin for useful discussions. The authors thank Nederlandse Aardolie Maatschappij and Shell for permission to publish.

REFERENCES

- Bouchon, M., Karabulut, H., Aktar, M., Özalaybey, S., Schmittbuhl, J. & Bouin, M.P., 2011. Extended nucleation of the 1999 Mw 7.6 Izmit earthquake, *Science*, **331**(6019), 877–880.
- Boué, P., Roux, P., Campillo, M. & de Caqueray, B., 2013a. Double beam-forming processing in a seismic prospecting context, *Geophysics*, **78**(3), V101–V108.
- Boué, P., Poli, P., Campillo, M., Pedersen, H., Briand, X. & Roux, P., 2013b. Teleseismic correlations of ambient seismic noise for deep global imaging of the Earth, *Geophys. J. Int.*, **194**(2), 844–848.
- Bourne, S.J., Oates, S.J. & van Elk, J., 2018. The exponential rise of induced seismicity with increasing stress levels in the Groningen gas field and its implications for controlling seismic risk, *Geophys. J. Int.*, **213**(3), 1693–1700.
- Brenguier, F., Shapiro, N.M., Campillo, M., Ferrazzini, V., Duputel, Z., Coutant, O. & Nercessian, A., 2008a. Towards forecasting volcanic eruptions using seismic noise, *Nat. Geosci.*, **1**(2), 126.
- Brenguier, F., Campillo, M., Hadziioannou, C., Shapiro, N.M., Nadeau, R.M. & Larose, E., 2008b. Postseismic relaxation along the San Andreas fault at Parkfield from continuous seismological observations, *Science*, **321**(5895), 1478–1481.
- Brenguier, F., Campillo, M., Takeda, T., Aoki, Y., Shapiro, N.M., Briand, X., Emoto, K. & Miyake, H., 2014. Mapping pressurized volcanic fluids from induced crustal seismic velocity drops, *Science*, **345**(6192), 80–82.
- Brenguier, F. *et al.*, 2016. Toward 4D noise-based seismic probing of volcanoes: perspectives from a large-N experiment on piton de la Fournaise Volcano, *Seismol. Res. Lett.*, **87**(1), 15–25.
- Brenguier, F. *et al.*, 2019. Train traffic as a powerful noise source for monitoring active faults with seismic interferometry, *Geophys. Res. Lett.*, **46**(16), 9529–9536.
- de Caqueray, B., Roux, P. & Campillo, M., 2016. Using slowness and azimuth fluctuations as new observables for four-dimensional reservoir seismic monitoring, *Geophys. Prospect.*, **64**(6), 1537–1555.
- Chang, K.W. & Segall, P., 2016. Injection-induced seismicity on basement faults including poroelastic stressing, *J. geophys. Res.: Solid Earth*, **121**(4), 2708–2726.
- Clarke, D., Zaccarelli, L., Shapiro, N.M. & Brenguier, F., 2011. Assessment of resolution and accuracy of the Moving Window Cross Spectral technique for monitoring crustal temporal variations using ambient seismic noise, *Geophys. J. Int.*, **186**(2), 867–882.
- Colombi, A., Chaput, J., Brenguier, F., Hillers, G., Roux, P. & Campillo, M., 2014. On the temporal stability of the coda of ambient noise correlations, *C.R. Geosci.*, **346**(11), 307–316.
- Donaldson, C., Caudron, C., Green, R.G., Thelen, W.A. & White, R.S., 2017. Relative seismic velocity variations correlate with deformation at Kilauea volcano, *Sci. Adv.*, **3**(6), e1700219.
- Draganov, D., Campman, X., Thorbecke, J., Verdel, A. & Wapenaar, K., 2009. Reflection images from ambient seismic noise, *Geophysics*, **74**(5), A63–A67.
- Ellsworth, W.L., 2013. Injection-induced earthquakes, *Science*, **341**(6142), 1225942.
- Johnson, C.W., Fu, Y. & Bürgmann, R., 2017. Seasonal water storage, stress modulation, and California seismicity, *Science*, **356**(6343), 1161–1164.
- Froment, B., Campillo, M., Roux, P., Gouedard, P., Verdel, A. & Weaver, R.L., 2010. Estimation of the effect of nonisotropically distributed energy on the apparent arrival time in correlations, *Geophysics*, **75**(5), SA85–SA93.
- Khoshmanesh, M. & Shirzaei, M., 2018. Episodic creep events on the San Andreas Fault caused by pore pressure variations, *Nat. Geosci.*, **11**, 610–614.
- Kruiver, P.P. *et al.*, 2017. An integrated shear-wave velocity model for the Groningen gas field, the Netherlands, *Bull. Earthq. Eng.*, **15**(9), 3555–3580.
- Lecocq, T., Longuevergne, L., Pedersen, H.A., Brenguier, F. & Stammer, K., 2017. Monitoring ground water storage at mesoscale using seismic noise: 30 years of continuous observation and thermo-elastic and hydrological modeling, *Sci. Rep.*, **7**(1), 14241.
- Mao, S., Campillo, M., van der Hilst, R.D., Brenguier, F., Stehly, L. & Hillers, G., 2019. High temporal resolution monitoring of small variations in crustal strain by dense seismic arrays, *Geophys. Res. Lett.*, **46**(1), 128–137.
- Mordret, A., Shapiro, N.M. & Singh, S., 2014. Seismic noise-based time-lapse monitoring of the Valhall overburden, *Geophys. Res. Lett.*, **41**(14), 4945–4952.
- Mordret, A. *et al.*, 2019. Noise-based ballistic wave passive seismic monitoring – Part 2: surface waves, *Geophys. J. Int.*, **220**(1), doi:10.1093/gji/ggaa016.
- Nakata, N., Chang, J.P., Lawrence, J.F. & Boué, P., 2015. Body-wave extraction and tomography at Long Beach, California, with ambient-noise tomography, *J. geophys. Res.*, **120**, 1159–1173.

- Nakata, N. *et al.*, 2016. Body-and surface-wave reconstruction from seismic-noise correlations between arrays at Piton de la Fournaise volcano, *Geophys. Res. Lett.*, **43**, 1047–1054.
- Niu, F., Silver, P.G., Daley, T.M., Cheng, X. & Majer, E.L., 2008. Preseismic velocity changes observed from active source monitoring at the Parkfield SAFOD drill site, *Nature*, **454**(7201), 204.
- Poli, P., Campillo, M., Pedersen, H. & Group, L.W., 2012. Body-wave imaging of Earth's mantle discontinuities from ambient seismic noise, *Science*, **338**, 1063–1065.
- Poupinet, G., Ellsworth, W.L. & Frechet, J., 1984. Monitoring velocity variations in the crust using earthquake doublets: an application to the Calaveras Fault, California, *J. geophys. Res.: Solid Earth*, **89**(B7), 5719–5731.
- Rivet, D., Brenguier, F. & Cappa, F., 2015. Improved detection of preeruptive seismic velocity drops at the Piton de La Fournaise volcano, *Geophys. Res. Lett.*, **42**(15), 6332–6339.
- Roux, P., Sabra, K.G., Gerstoft, P., Kuperman, W.A. & Fehler, M.C., 2005. P-waves from cross-correlation of seismic noise, *Geophys. Res. Lett.*, **32**(19).
- Sens-Schönfelder, C. & Wegler, U., 2006. Passive image interferometry and seasonal variations of seismic velocities at Merapi Volcano, Indonesia, *Geophys. Res. Lett.*, **33**(21), doi:10.1029/2006GL027797.
- Silver, P.G., Daley, T.M., Niu, F. & Majer, E.L., 2007. Active source monitoring of cross-well seismic travel time for stress-induced changes, *Bull. seism. Soc. Am.*, **97**(1B), 281–293.
- Takano, T., Nishimura, T., Nakahara, H., Ohta, Y. & Tanaka, S., 2014. Seismic velocity changes caused by the Earth tide: ambient noise correlation analyses of small-array data, *Geophys. Res. Lett.*, **41**(17), 6131–6136.
- Talwani, P., Chen, L. & Gahalaut, K., 2007. Seismogenic permeability, *J. geophys. Res.: Solid Earth*, **112**(B7).
- Wang, Q.Y., Brenguier, F., Campillo, M., Lecointre, A., Takeda, T. & Aoki, Y., 2017. Seasonal crustal seismic velocity changes throughout Japan, *J. geophys. Res.: Solid Earth*, **122**(10), 7987–8002.
- Weaver, R., Froment, B. & Campillo, M., 2009. On the correlation of non-isotropically distributed ballistic scalar diffuse waves, *J. acoust. Soc. Am.*, **126**(4), 1817–1826.
- Yamamura, K., Sano, O., Utada, H., Takei, Y., Nakao, S. & Fukao, Y., 2003. Long-term observation of in situ seismic velocity and attenuation, *J. geophys. Res.: Solid Earth*, **108**(B6).