



**HAL**  
open science

## Timely-activated 316L stainless steel: A low cost, durable and active electrode for oxygen evolution reaction in concentrated alkaline environments

Florian Moureaux, Philippe Stevens, Gwenaëlle Toussaint, Marian Chatenet

### ► To cite this version:

Florian Moureaux, Philippe Stevens, Gwenaëlle Toussaint, Marian Chatenet. Timely-activated 316L stainless steel: A low cost, durable and active electrode for oxygen evolution reaction in concentrated alkaline environments. *Applied Catalysis B: Environmental*, 2019, 258, pp.117963. 10.1016/j.apcatb.2019.117963 . hal-02426817

HAL Id: hal-02426817

<https://hal.univ-grenoble-alpes.fr/hal-02426817>

Submitted on 25 Oct 2021

**HAL** is a multi-disciplinary open access archive for the deposit and dissemination of scientific research documents, whether they are published or not. The documents may come from teaching and research institutions in France or abroad, or from public or private research centers.

L'archive ouverte pluridisciplinaire **HAL**, est destinée au dépôt et à la diffusion de documents scientifiques de niveau recherche, publiés ou non, émanant des établissements d'enseignement et de recherche français ou étrangers, des laboratoires publics ou privés.



Distributed under a Creative Commons Attribution - NonCommercial 4.0 International License

# Timely-activated 316L stainless steel: a low cost, durable and active electrode for oxygen evolution reaction in concentrated alkaline environments

*Florian Moureaux<sup>a,b</sup>, Philippe Stevens<sup>b</sup>, Gwenaëlle Toussaint<sup>b</sup> and Marian Chatenet<sup>a\*</sup>*

<sup>a</sup> Univ. Grenoble Alpes, CNRS, Grenoble-INP\*, LEPMI, 38000 Grenoble, France

<sup>b</sup> Department Electric Equipment Laboratory (LME), EDF R&D, Avenue des Renardières,  
77818 Morêt-sur-Loing CEDEX, France

\* Institute of Engineering, Univ. Grenoble Alpes

## AUTHOR INFORMATION

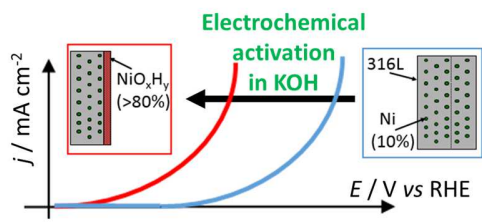
### **Corresponding Author**

\* [Marian.Chatenet@grenoble-inp.fr](mailto:Marian.Chatenet@grenoble-inp.fr)

## ABSTRACT

316L stainless steel (SS) electrodes were activated for the oxygen evolution reaction (OER) without addition of hetero-elements or incorporation of deposits at their surface. Such activation was either spontaneous (*in situ*: slow surface modification upon OER operation), or accelerated (*ex situ*, by alternating potential steps at low/high potential). Both techniques enable formation of a catalytic surface from the SS bulk components in experimental conditions close to those of usage, which guarantees long-term-stability and high-activity of the surfaces. *Ex situ*-activated electrodes show comparable performances than *in situ*-activated electrodes, the resulting OER activities in KOH electrolytes being high compared to other noble-metal-free electrocatalysts. Activated 316L electrodes are remarkably stable in long-term OER operation (> 300 h). Therefore, cheap and widely-available activated-SS may be very competitive OER materials for alkaline water electrolyzers. These results open the way to the development of highly-active and low-cost OER materials for hydrogen production, or metal-air batteries.

## TOC GRAPHICS



**316L** stainless-steel electrochemically-activated in KOH exhibits Ni-enriched surface & promotes **fast & durable OER**

## 1. Introduction

One cannot ignore the deleterious issues of global warming and the means that mankind can use to try to attenuate emissions of greenhouse gases that are at its origin [1]. Fossil fuels should no longer be extensively extracted and should wherever possible be substituted with a clean energy vector: electricity produced from renewable energy (of solar, wind or water origin) is an obvious solution, and is undergoing rapid growth. However, injecting large amounts of intermittent renewable electricity may destabilize the electrical grid if it is not consumed at the same rate that it is produced. One solution to this electrical engineering issue would be to efficiently store renewable electricity when it is less needed, so that the grid can return benefit from this storage for peaks in electricity demand [2]. There are many technological solutions to store electrical energy; one of the most widespread and most efficient of them is pumped hydro, but one cannot implement it everywhere and most sites where it could prove viable are already equipped. Electrochemical storage in batteries is another well-studied option [3, 4], *e.g.* in Zn-air batteries not using any noble catalysts [5], which could provide a solution for short to medium storage times, typically between 15 minutes and 4 hours. For longer storage times or for large amounts of electricity, power-to-hydrogen could be a solution, at least for use in conjunction with the other storage means mentioned above.

Hydrogen is a clean energy carrier when its production does not involve fossil fuels, which is where water electrolysis has an important role to play [6, 7]. Although molecular hydrogen ( $H_2$ ) is usually the product of interest in water electrolysis, the research community soon realized that it is the other product of water splitting, molecular oxygen ( $O_2$ ) that limits the reaction, owing to the very sluggish oxygen evolution reaction (OER) on most electrocatalysts. In addition, the experimental conditions experienced by OER anodes in water electrolyzers are extremely

aggressive, resulting in severe durability issues. Today, the majority of the research in the world is focused on water electrolyzers using proton-exchange membranes (PEM), which exhibit high initial performance [8, 9]. However, the acidic environment of the PEM makes the use Pt-group metal (PGM) electrocatalysts [8, 10-15] quasi-mandatory, these elements being of very limited abundance, and of questionable stability [16-20]. Most non-PGM electrocatalysts [21-32] are more abundant and therefore more desirable, but these materials are generally less active and durable than PGMs in acidic environments. For this reason, alkaline water electrolysis is a subject of rising interest, as it might be the only water electrolysis technology with sufficient electrical performances that is compatible with a widespread deployment.

Alkaline water electrolysis is not a new technology, as it is the historical large-scale means of “clean” hydrogen production [23, 33-36]. Nickel-based oxides [37-39] (either used “alone” or in combination with a suitable support [40]) or cobalt-based oxides [41-45] are often considered amongst the best electrode materials for alkaline OER [27, 46-48]. One widely-used strategy to prepare stable OER electrocatalysts is to deposit a thin “active layer” of these metals/oxides on the surface of an electronically conductive substrate, *e.g.* carbon [38, 47], conducting oxides [9, 49-55] or steels [56-59]. Although electrocatalysts prepared on such electrodes can be very active, their long-term durability is rarely reported and is open to question, in particular in strong bases: except from Li’s work [60], dealing with Janus Ni-Co-P nanowires, which were demonstrated for 3000 h in water electrolysis, durability studies of the literature usually do not exceed a few 10 or at best a few 100 of h in operation for such electrocatalysts. This has been demonstrated, for example for carbon surfaces [61-64], carbon-supported electrocatalysts [65-70] or metal and their oxides [18, 19]. In addition, when stainless steel (hereafter denoted as “SS”) is used as a conducting substrate only, the many transition metals that make them up turn

out to be active for the (alkaline) OER, and they are not put to beneficial use. This is why some reports now focus on the use of stainless steels as “simple and easy” materials for the alkaline OER. In this case, the active (and stable) layer of the OER electrode originate from the components of the bulk material. This active layer plays the role of an “active passivation layer”, *i.e.* a layer that exhibits antagonistic properties of high electrocatalytic activity together with high stability towards corrosion through passivation. A very good example in this direction is described in the previous work of the authors, where 316L SS was activated *in situ* by a simple long-term OER operation in concentrated LiOH electrolyte, producing a very active and stable surface (stability was demonstrated for 3000 h in OER operation) to promote the positive reaction of water splitting in 5 M LiOH (as a third charging electrode in an aqueous Li-air battery) [71]. Other examples have emerged in the literature, in particular from Schafer’s group in Germany [72-76] and others [77], as recalled in a recent review [78]. One of the very important characteristic of stainless steel electrodes activated *in situ* by “simple (long-term) operation” in the electrolyte of operation, is their “self-healing ability”, which accounts for their long-term durability. Because the active layer is made from controlled corrosion of the underlying bulk alloy (which also protects it), it is capable of re-forming later on if, by accident, the active layer is detached (for example under the mechanical pressure of harsh gas evolution) [71, 77]. Another solution is to perform an *ex situ* treatment to generate a tailored surface layer that is prone to catalyze the reaction of interest. The group of Schafer made significant progresses in this direction for OER electrocatalysis [72, 74, 75], soon followed by others [79], the strategy being also used for alternative applications, *e.g.* to design supercapacitors [80] or Li-ion battery [81] electrodes.

Following the work on activated 316L SS electrodes for OER in concentrated LiOH electrolytes [71], the present paper investigates the same type of materials, but for use in KOH electrolyte. The main objective of this contribution is to extend the concepts to more widely-used electrolytes and in particular to assess whether these electrodes could be useful in an industrial alkaline water electrolysis process, most of which use aqueous KOH electrolyte (at least prior the introduction of anion-exchange membranes in these technologies [82]), or as third electrode in aqueous metal-air batteries (*e.g.* Zn-air). In addition, knowing that in the previous work of the authors [71], the *in situ* activation in 5 M LiOH<sub>(aq)</sub> lasted *ca.* 250 h, which is not practical, a procedure for a fast *ex situ* activation of the 316L SS electrode in 5 M LiOH is proposed. The so-obtained materials were benchmarked to home-made CoOx deposits, known to be very active for the OER [41, 45, 56, 83, 84]. Finally, because accelerated activation in LiOH electrolytes may not be practical, a procedure where the 316L SS surfaces were activated in KOH was analyzed to check whether such electrodes present the same morphology, composition and activity as those activated in LiOH electrolytes. All the experimental findings (activity reached and stability of the performances) will be supported by thorough physicochemical characterizations, namely scanning electron microscopy (SEM), X-ray diffraction (XRD) and Raman spectrometry, so as to draw conclusions about composition-structure/activity-durability relationships.

## 2. Experimental

Most of the experimental procedures are derived from previous works [71, 85] and the readers are directed to these documents for more details. Specific to this study are the preparation and



characterizations of cobalt oxides deposits on 316L stainless steel substrate. Two types of  $\text{CoO}_x$  deposition technics were performed.

The electrochemical deposition of  $\text{CoO}_x$  were prepared from 0.3 M  $\text{CoSO}_4$  aqueous electrolyte at  $T = 50^\circ\text{C}$ , by applying a cathodic current density of  $j = -1 \text{ mA cm}^{-2}$  (geometric) during  $t = 1500 \text{ s}$  on the desired 316L substrate, which should (in theory) yield a deposit thickness of *ca.* 500 nm of cobalt. The layer obtained was then thermally annealed (under air) using a  $1^\circ\text{C min}^{-1}$  ramp from  $T = 25^\circ\text{C}$  to  $T = 400^\circ\text{C}$ , followed by a 2 h step at  $T = 400^\circ\text{C}$  and then a cooling ramp at  $-1^\circ\text{C min}^{-1}$  down to  $T = 25^\circ\text{C}$ .

Sol-gel deposition of  $\text{CoO}_x$  was also experimented by following a procedure developed by Singh et al.[86]. More specifically, the precursors of the oxides layer were blended in stoichiometric amounts (*ca.* 0.1 M  $\text{CoSO}_4$  + 0.2 M  $\text{LiOH}$ ), resulting in a  $\text{Co}(\text{OH})_2$  precipitate. The latter was filtered, abundantly rinsed with ultrapure water (18.2  $\text{M}\Omega \text{ cm}$ , < 3 ppb total organic carbon, Millipore®) and dried for 24 h in room conditions. The powder obtained was then dissolved in acetic acid to produce a gel of  $\text{Co}(\text{CH}_3\text{OO})_2$ , which was painted on the 316L substrate, and finally thermally-annealed under air for  $t = 30 \text{ min}$  at  $T = 350^\circ\text{C}$  to convert the cobalt acetate to  $\text{Co}_3\text{O}_4$ .

In both cases, and also for the bare 316L substrate, the  $\text{CoO}_x/316\text{L}$  surfaces obtained were thoroughly characterized by scanning electron microscopy (SEM, HIROX SH-1500 SEM) coupled with elemental X-Ray energy dispersive spectrometry (X-EDS, XFLASH 410-H semiconductor Silicon Drift Detector, controlled with Esprit® V1.8), X-Ray diffraction (XRD, PANalytical X'Pert Pro MPD operating at 45 kV and 40 mA – Bragg-Brentano configuration,  $\text{Cu K}\alpha$  radiation), Raman spectroscopy (Renishaw® Raman microscope, operating with an argon

LASER at 540 nm) and X-Ray photoelectron spectroscopy (XPS, performed on a XR3E2 apparatus (Vacuum Generator) using a Mg K $\alpha$  source (1253.6 eV) and a hemispherical analyzer at constant pass energy of 30.0 eV).

The materials were also tested for their electrochemical activity and durability. The electrochemical characterizations were performed in a three-electrode electrochemical cell as previously described [71]. Although experimentally, the reference electrode used was a mercury-mercury oxide electrode (Hg-HgO, 1 M KOH), all the data presented herein are expressed versus the reversible hydrogen electrode (RHE), so that the pH effect is corrected for the three aqueous alkaline electrolytes characterized here: 1 M KOH, 5 M KOH and 5 M LiOH. Given that measuring the pH of strongly alkaline solutions is not straightforward, the pH values determined by Pound *et al.* [87] (Table 1) were used. From these, the potential values experimentally measured versus (Hg-HgO, 1 M KOH) were converted on the RHE.

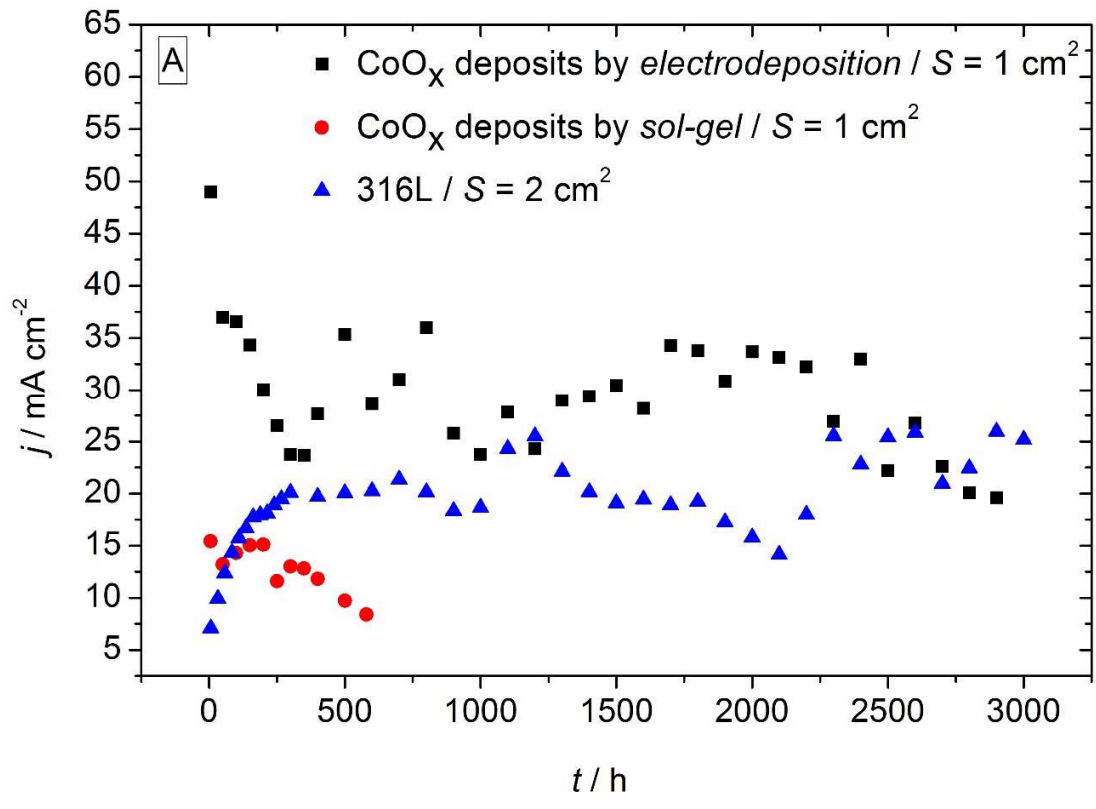
*Table 1: values of the pH of the electrolyte solutions considered in the study, as determined by Pound et al. [87].*

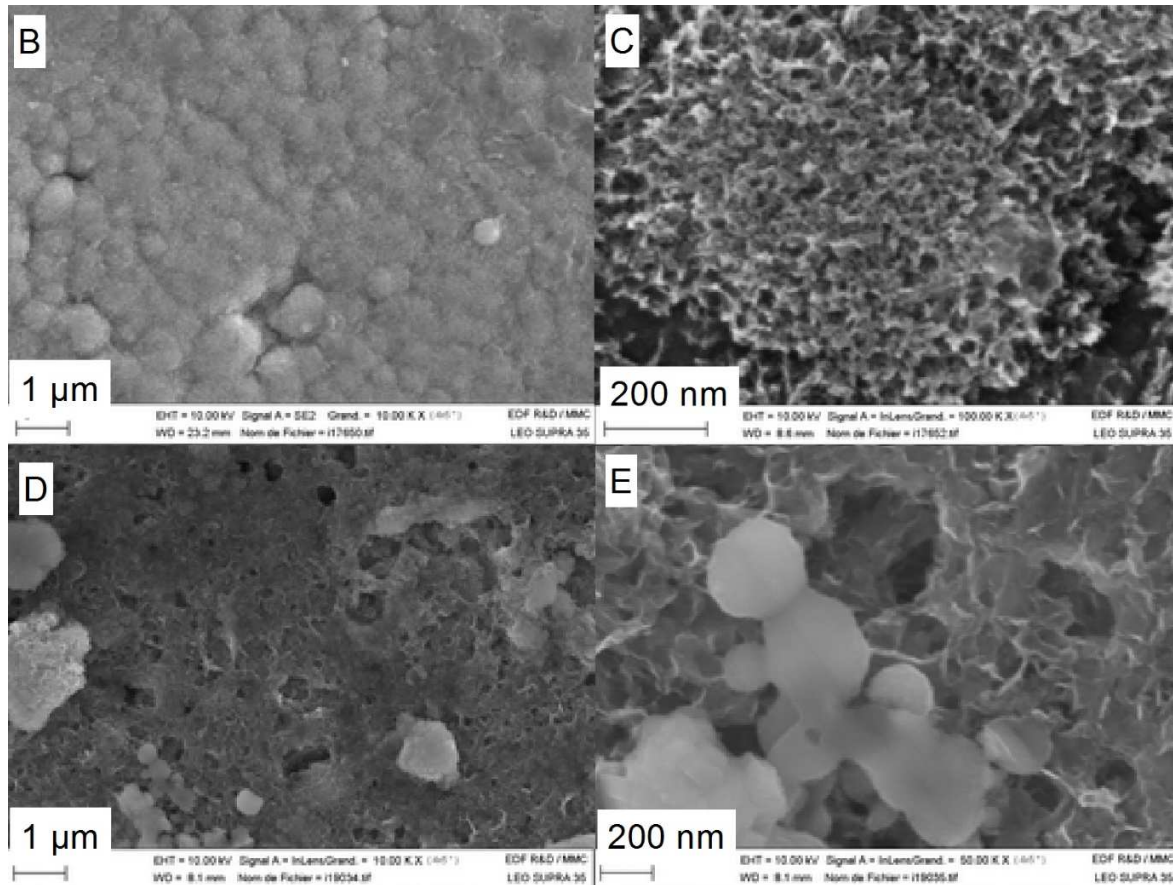
Electrolyte	pH	$E_{\text{RHE}}$ vs. $E_{\text{Hg/HgO}} - 1 \text{ M KOH}$
5 M LiOH	14.5	0.95
5 M KOH	15.3	1.00
1 M KOH	13.9	0.92

### 3. Results and discussion

*3.1. Preamble: instability of electrodes prepared by electrodeposition of a foreign layer at the surface of a SS 316L electrode and interest of “self-activated” electrodes*

The results shown in Figure 1 suggests that hetero-deposits of  $\text{CoO}_x$  may not be stable on the long-term for the OER. In particular, the highly-active  $\text{CoO}_x$  deposits investigated here are severely modified by long-term oxygen evolution in 5 M LiOH electrolyte. Two processes are at stake: (i) the very oxidizing conditions experienced during OER promote the “corrosion” of the  $\text{CoO}_x$  deposit and (ii) the gas evolution which induces the mechanical disintegration of the layer from its support. Such mechanical disintegration occurs in particular when the interaction of the active layer with its support is not sufficiently strong, which is obvious for the sol-gel  $\text{CoO}_x$  deposit in Figure 1. Once the layer has been completely destroyed, only the substrate remains and the OER activity decreases (at least until the 316L SS substrate self-activates upon operation, which takes time, as detailed below). In addition, the deep modifications of the electrodeposited  $\text{CoO}_x$  electrode surface (Figure 1B,C) raises the question of the relevance of tightly controlling the initial electrode composition and texture as it will likely be (severely) modified (if not destroyed) in usage, with no hope of its re-formation in operation.





*Figure 1: (A) Time-dependent performance of OER electrodes consisting of CoOx deposits prepared either by electrodeposition or by sol-gel chemistry at the surface of a 316L SS surface, during a 3000 h OER test performed at  $E = 1.75$  V vs. RHE in 5 M LiOH at  $T = 25^{\circ}\text{C}$ ; uncompensated Ohmic-drop. Their activity irreversibly decreases over time, owing to modifications of the CoOx deposit and especially its detachment from the SS surface. The performances of the SS support (316L) are also given for comparison. Representative micrographs of the surface of the electrodeposited CoOx deposit (B, C) before and (D, E) after the 3000 h of test. The surface of the CoOx deposit is deeply modified upon operation. Adapted from [85] with permission from Univ. Grenoble-Alpes.*

The authors believe that these problems will come upon any porous active deposit used in gas evolution reactions (in particular the OER). In addition, the stability of the layers formed “*ex situ*” (and using elements that do not enter the composition of the bulk substrate) at the surface of steels for operation in water splitting has previously been questioned [78]. The answer may come from the formation of a stable, homogenous and adherent catalytic layer on the surface of steel electrodes by a direct corrosion/passivation mechanism of this surface during OER, as previously demonstrated. This strategy was successfully adopted by the authors for the OER in concentrated LiOH electrolyte [71, 85] (Figure 2). In that study, remarkable stability and OER activity was demonstrated. However, the activation of the 316L SS electrode in LiOH electrolyte was very long (*ca.* 250 h), which is a clear limitation for a practical application. Besides, these remarkable OER performances were obtained in 5 M LiOH electrolyte, and it would be interesting to check whether these materials are also active and durable for operation in KOH electrolyte, for a possible application in water electrolysis, or in rechargeable aqueous metal-air batteries (*e.g.* Zn-air). Results in this direction are presented in the next sections.

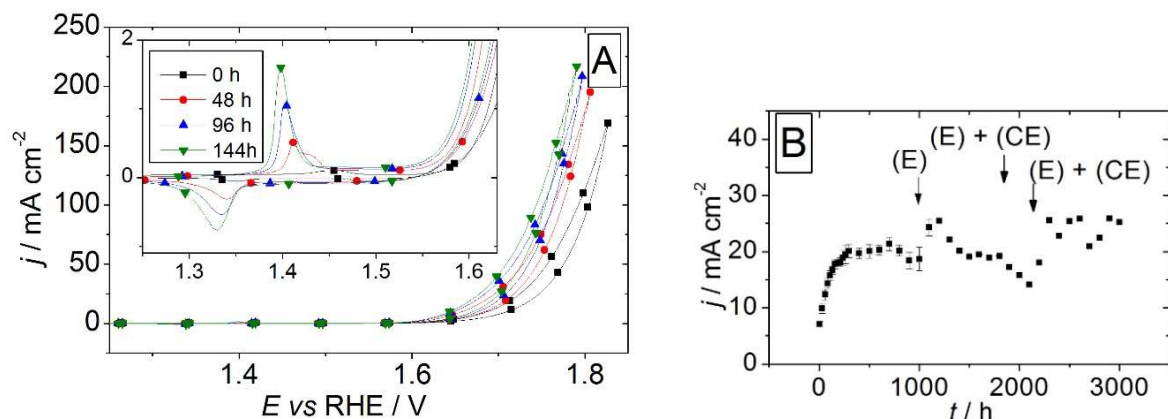


Figure 2: (A) Cycling voltamperograms monitored for a 316L SS electrode in 5 M LiOH at  $T = 25^{\circ}\text{C}$  during the first 144 h of operation as an OER electrode (constant polarization,  $E = 1.70\text{ V}$

*vs. RHE ; uncorrected from Ohmic drop) revealing the substantial “activation” of the surface. (B) After the initial in situ “activation”, the performances maintain for very long term (the variations in current density over time originated by the gradual failure of the reference and/or counter-electrode; as a result, the electrolyte (E) and counter-electrode (CE) had to be periodically replaced). Adapted from [71], with permission from Elsevier.*

### **3.2. Ex situ accelerated activation of a 316L SS electrode**

The formation of a Ni-rich “active layer” that results in a high OER activity but which also protects the underlying 316L SS electrode (Figure 2) is explained by the following reaction mechanism during the “early” stages (*i.e.* the first 250 h or OER operation) of the process [71, 85]: the first step is an anodic dissolution of the 316L metals (forming mainly nickel, iron and chromium cations, the base elements of 316L SS) followed by their possible precipitation owing to their low solubility in the 5 M LiOH electrolyte. In particular, the different solubility values of Cr, Fe and Ni cations produce the peculiar composition of this layer (82.5 at% Ni, 10 at% Fe, 7.5 at% Cr, *i.e.* very different from the base composition of bulk 316L SS: *ca.* 10-14 at% Ni, *ca.* 70 at% Fe, *ca.* 16-18.5 at% Cr). As a consequence, the Ni-rich layer so-obtained possesses the remarkable combined properties of passivation, semi-conductivity and electrochemical OER activity [71, 88], the latter likely originating from a so-called hypo-hyper d interbonding effect put forth by Jaksic *et al.*[89] and then Micoud *et al.* [90]. As such, the passive film is capable of protecting the underlying OER electrode in the course of the continuous OER operation, which explains its very moderate thickness even after 3000+ hours of operation in 5 M LiOH (below 50 nm) [71]. On the contrary, the fact that this layer protects the underlying 316L SS raises

questions about the reasons why such a layer forms. At that stage, the authors postulate that it is the initial characterization steps (see Figure 2A) that led to the formation of this layer. As such, it is anticipated that alternating the potential of the 316L electrode between “low” and “high” values in a similar electrolyte (5 M LiOH) would lead to the same surface structure/composition of the electrode, and therefore to the same electrochemical properties (activity and robustness).

This study aims at first to accelerate the formation of the Ni-rich passive (to limit corrosion) and active (to enable fast OER) film at the surface of the 316L electrode. Being admitted that it is the alternation of the electrode potential between “low” and “high” potential values (during the characterization steps of Figure 2A) that led to the active layer, the protocol of *ex situ* accelerated activation was built as follows.

- Step 1: a sequence of 10 min polarization at  $E = 1.53 \text{ V vs. RHE}$  (a potential above the domain of formation of NiIII, see Figure 2A) followed by 5 min at  $E = 0.93 \text{ V vs. RHE}$  (a potential below the domain of formation of NiII, see Figure 2A), overall repeated twice;
- Step 2: two voltamperometric cycles at  $\nu = 5 \text{ mV s}^{-1}$  performed in the range  $0.93 < E < 1.93 \text{ V vs. RHE}$ ; the potential is therefore, again, scanned above/below the NiII/NiIII redox transition;
- The sequences of Step 1 and then Step 2 was repeated 12 times, the entire protocol lasting overall 8 h 40 min.

The rationale of these alternations of “high” / “low” potential values was to favor the electrochemical dissolution/chemical precipitation of the metal cations of the 316L electrode at high potential and to reduce the surface species at low potential, to re-enable some dissolution of



the electrode and to build in this manner a “thick-enough” (and therefore stable-enough protection of the underlying bulk 316L material) active layer.

After such accelerated activation, the 316L SS electrodes were firstly tested for the OER in 5 M LiOH electrolyte, so as to compare their activity and stability with regards to the electrodes activated *in situ* (see Figure 2) in a time-consuming procedure (*ca.* 250 h). Figure 3 clearly demonstrates that the activity of 316L SS electrodes activated *ex situ* by this accelerated procedure is similar to that ultimately reached by the electrodes activated *in situ*. Interestingly, these high performances are reached much faster than the 200 h of operation required for the *in situ* activated electrodes. One should note however that the activity of the *ex situ* activated electrode slightly increases in the first 50 h of the OER durability test, probably owing to a stabilization and/or thickening of the surface film during the initial period of the OER operation.

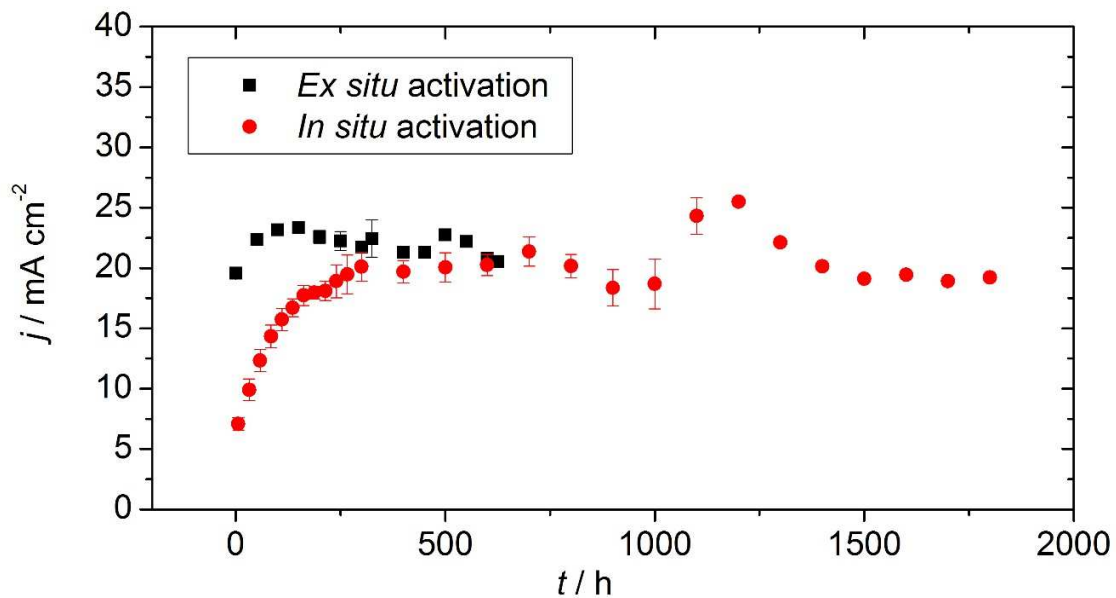


Figure 3: Comparison of the OER performances in 5 M LiOH at  $T = 25^{\circ}\text{C}$  of the 316L SS electrodes OER (test performed at  $E = 1.75\text{ V vs. RHE}$ ) after accelerated activation and of the *in*

*situ* activated 316L SS electrode (see Figure 2). Statistical data were obtained for duration of tests below 350 h for the 316L SS electrodes after accelerated activation, and up to 1100 h for *in situ* activated electrodes. The trace relative to the *in situ* activated 316L SS electrode is the same as that presented in Figure 2B.

The latter behavior (activation/corrosion) of the electrodes during OER operation in 5 M LiOH was characterized by measuring the surface charge relative to the NiII/NiIII redox couple as a function of the time of operation, this coulometry assessment being calculated from the cyclic voltammograms performed periodically during the OER test. Figure 4 demonstrates that the NiII/NiIII redox couple coulometry of the *ex situ* activated 316L electrode is more stable versus time, which denotes slower roughening (or oxides growth) for this electrode. The thickness of the “active oxides layer” formed versus the time of operation can also be estimated from Figure 4: it grows more slowly in the case of the *ex situ* activated 316L electrode, which denotes for an overall better resistance of this electrode towards corrosion during OER operation in 5 M LiOH electrolyte (the link between the surface capacity/coulometry of the NiII/NiIII redox couple and the consumption of the base metals of the 316L electrode to build the active oxides layer was previously demonstrated [71]).

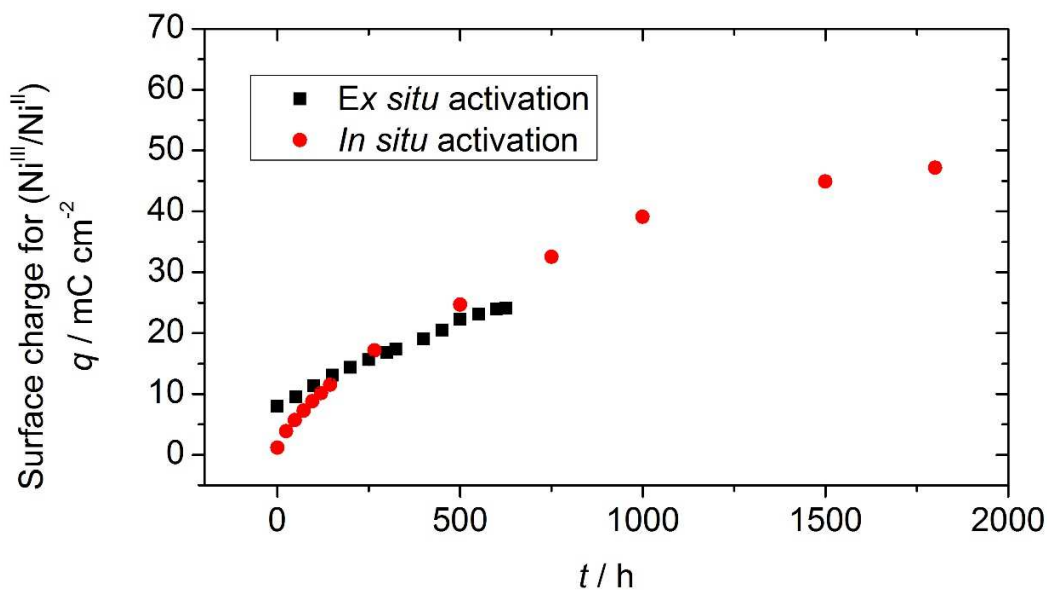


Figure 4: Comparison of the surface charge relative to the NiII/NiIII redox couple as a function of the time of OER operation in 5 M LiOH at  $T = 25^{\circ}\text{C}$ , for the 316L SS electrodes after accelerated activation or *in situ* activation (see Figure 2 and 3).

This stable OER activity of the *ex situ* activated SS electrodes can be linked to its surface morphology, which is rather homogeneous, compact and near-free of defects (Figure 5C,D); in particular, no cracks or surface heterogeneities are seen, which differs from the observations made for an *in situ* activated electrode (Figure 5A,B). This better integrity of the Ni-rich film formed by *ex situ* accelerated activation accounts for the better stability of its electrochemical response compared to *in situ* activated electrodes (Figure 3). In addition, the fact that close to full performances can be reached in less than 9 hours (the duration of the accelerated activation treatment), *i.e.* 30 times faster than an *in situ* activation in the same electrolyte, holds great interest for a practical application.

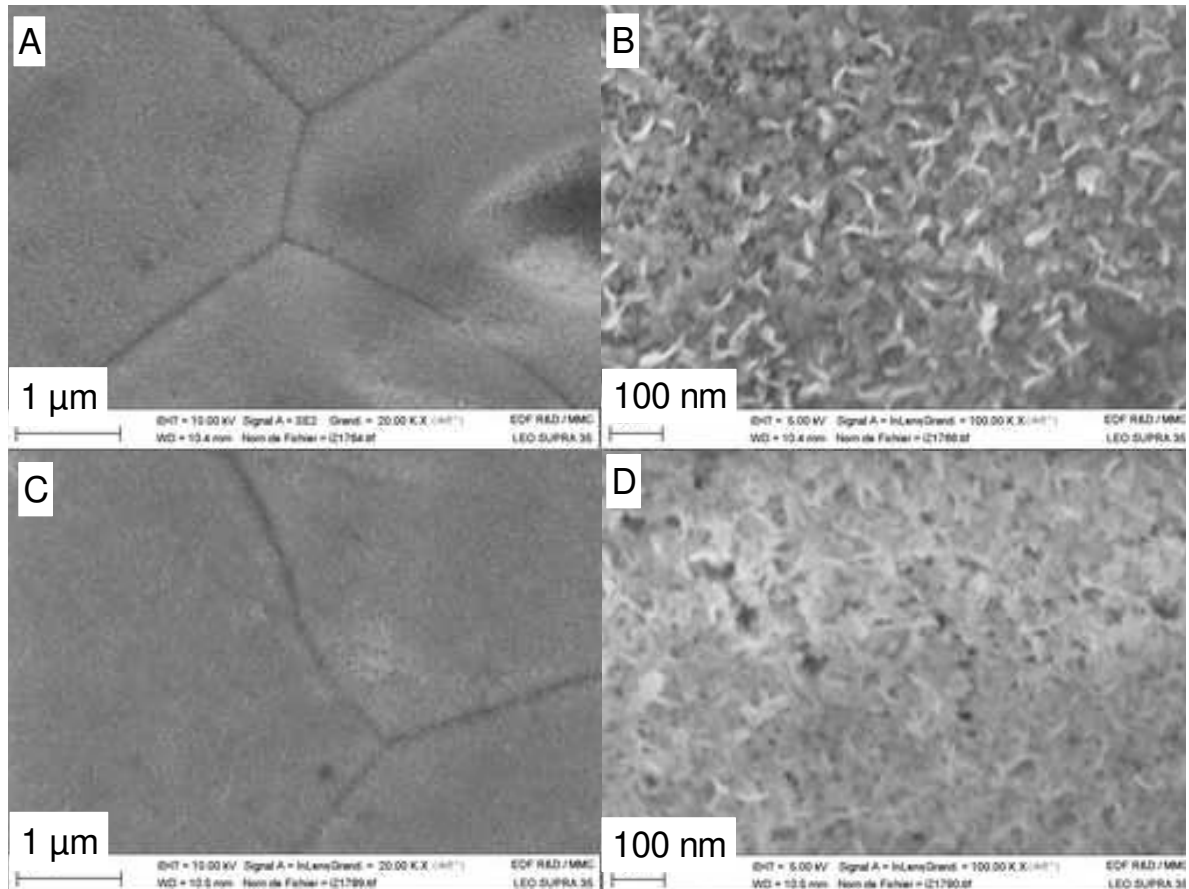


Figure 5: Representative micrographs of the surface of the 316L SS electrode activated (A, B) in situ or (C, D) ex situ by an accelerated procedure. The surface layer of the ex situ-activated electrode is very homogeneous and near-free of defects. Adapted from [85] with permission from Univ. Grenoble- Alpes.

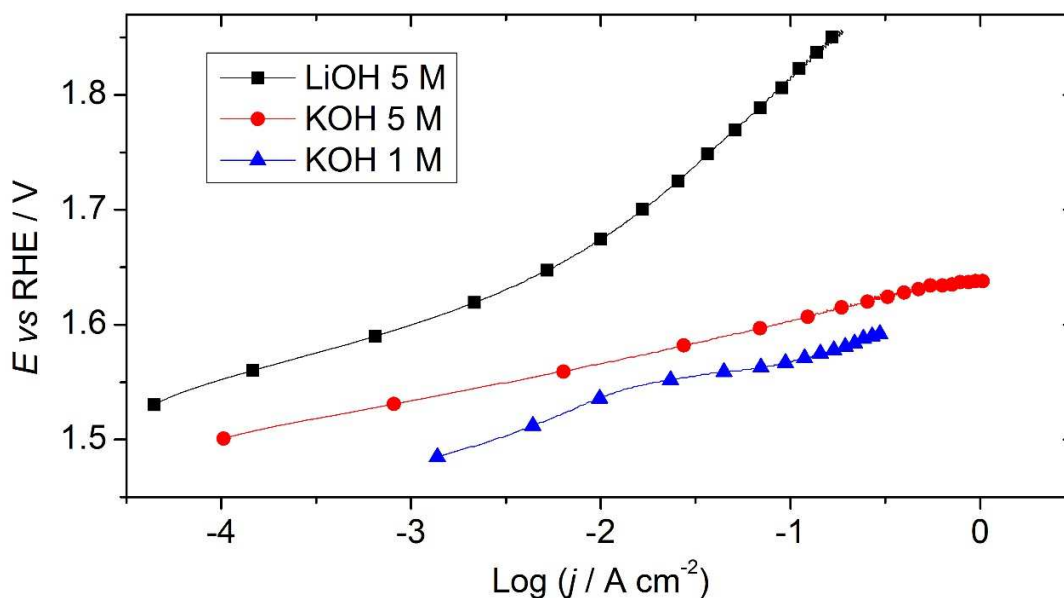
### 3.3. OER performances in KOH electrolytes of 316L SS electrodes activated ex situ in 5 M LiOH

The electrochemical performances of 316L SS electrodes activated *ex situ* in 5 M LiOH by the accelerated procedure described above were characterized afterwards in KOH electrolytes, in

view of a possible application of these electrodes in low-cost and durable alkaline water electrolysis or KOH-based metal-air batteries. The experiments were performed in a rotating disk configuration (the geometric area of the activated 316L SS electrode was *ca.* 0.2 cm<sup>2</sup>); the RDE revolution rate had no effect of on the OER current density monitored in the range  $0 < j < 1 \text{ A cm}^{-2}$ , indicating that mass-transport limitations are not at stake in the present experimental conditions, even at this reasonably high current density (unlike feared in other publications [46, 47] for  $j > 0.01 \text{ A cm}^{-2}$ ).

The results shown in Figure 6 demonstrate that the 316L SS electrodes activated *ex situ* by the accelerated procedure in 5 M LiOH electrolyte are also very active for OER in KOH electrolytes; the best performances are reached in 1 M KOH, likely owing to (i) the larger oxygen solubility in this electrolyte compared to the others (the solubility of O<sub>2</sub> severely decreases at increasing pH [91, 92], leading to larger masking of the electrode by O<sub>2</sub> bubbles) and to (ii) the larger water activity in this solution than in the 5 M concentrated hydroxide electrolytes [87]; the performances in 5 M KOH are also significantly larger than in 5 M LiOH. The fact that Li<sup>+</sup> species decrease the OER activity of nickel oxides electrodes, which is why LiOH is a popular electrolyte additive to enhance the cyclability and performances of positive NiOOH electrodes in alkaline batteries [93, 94], cannot be neglected and could account for these observations. This effect can be explained by the ability of small Li<sup>+</sup> cations to substitute protons in hydrated forms of metal-oxides, thereby blocking redox transitions and impeding electrocatalytic activity. This was particularly demonstrated for MnO<sub>x</sub>/C oxygen reduction electrocatalysts: in LiOH electrolyte, the insertion of Li<sup>+</sup> into the MnO<sub>x</sub> lattice stabilizes both the Mn atoms at the oxidation state 3 and the oxygen groups at the carbon surface, which prevents their role of redox mediating species and further blocks the catalytic process, eventually producing increased ORR

overpotential values when compared to the activity of the same electrocatalysts in KOH electrolytes [95].



*Figure 6: Representative OER voltamperograms measured at 316L electrodes ex situ activated in 5 M LiOH for operation in 5 M LiOH, 1 M KOH or 5 M KOH. In all case, the geometric surface area of the electrode was  $S_{geo} = 0.2 \text{ cm}^2$ , the potential sweep rate  $v = 0.1 \text{ mV s}^{-1}$  (quasi-stationary conditions), the temperature maintained at  $T = 25^\circ\text{C}$  and the Ohmic drop compensated.*

Such an insertion of the supporting electrolyte cations in the crystalline lattice of the formed surface oxide layer is further demonstrated on Figure 7A,B. Li 1s binding energy is detected upon operation in 5 M LiOH, whereas K 2p<sub>3/2</sub> is detected upon operation in 5 M KOH. The Raman spectra of Figure 7C confirms the trend: after operation in 5 M LiOH, the spectra obtained in the region characteristic to the NiOOH bonds shows a significant blue shift (by 1.4

and  $2.9 \text{ cm}^{-1}$ ), which signals an increase of the strain on the chemical bonds. This excess strain likely originates from the insertion of  $\text{Li}^+$  in the crystalline lattice of Ni-oxides, and the authors speculate that this causes the largely decreased OER activity of the *ex situ* activated 316L SS electrodes in 5 M LiOH compared to KOH, as was also reported for the activity of  $\text{MnOx/C}$ -based ORR electrocatalysts [95], which was depreciated when operated in LiOH electrolytes.

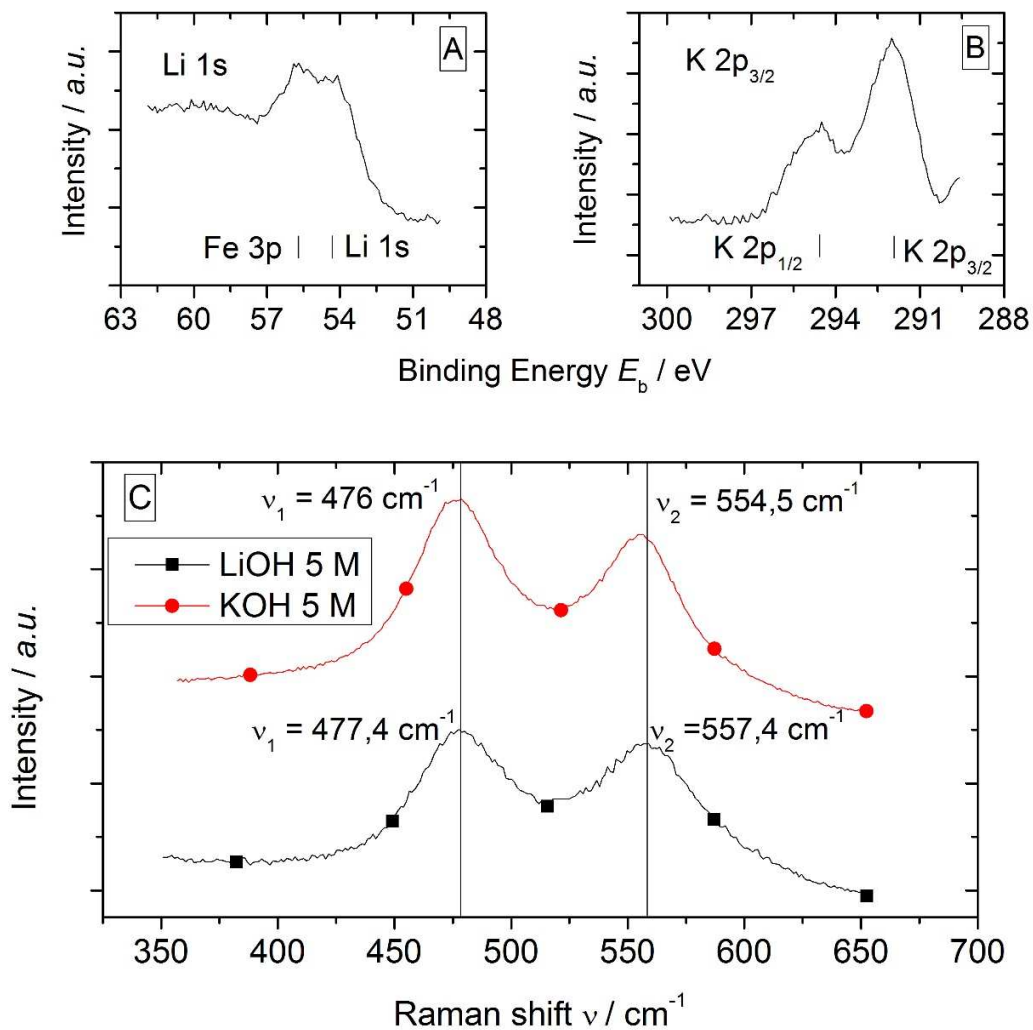


Figure 7: Plots of X-Ray Photoelectron spectroscopy (XPS) of the surface of activated 316L SS electrodes that have undergone OER operation in (A) 5 M LiOH and (B) 5 M KOH. The X-Ray

*source was Mg K $\alpha$  1253 eV, and the carbon reference peak was set at 284.6 eV. (C)*

*corresponding Raman spectra monitored for the same samples. The spectra were acquired 5 min after a 1 h-polarization of the electrodes at  $E = 1.73$  V vs. RHE (Ohmic drop uncompensated).*

In KOH electrolyte, the remarkable activity of the *ex situ* activated 316L SS electrodes for OER in these conditions is highlighted in Table 2. When the performances are benchmarked to non-noble-metal OER electrocatalysts (Table 3), it is evident that a properly-activated 316L electrode is very active and competes with state-of-the-art (non-noble) OER materials of the literature. The present electrode is as active or more active than most of these materials, except for a mixed cobalt-lanthanum oxide, for which the OER overvoltage is decreased by *ca.*  $\eta = 0.1$  V at  $j = 100$  mA cm<sup>-2</sup> geometric [22]. Nevertheless, the latter material, elaborated in the form of a thin-film onto a foreign substrate (nickel in that case), would likely experience the durability issues mentioned in preamble of the present study for hetero-deposits (see section 3.1 and Figure 1), issues which should not be at stake for a material with a “self-prepared” active layer like the activated 316L SS electrode [78]. In other words, if this “self-prepared” active layer, made from the very component of the 316L SS bulk substrate, degrades upon operation (*e.g.* from mechanical detachment due to harsh O<sub>2</sub> bubbles evolution), it is likely that it will be capable of forming again (there is still plenty of the active material in the bulk of the underlying 316L SS material to form new layers). In the literature, to the best of the author’s knowledge, only a few paper have presented stability data in OER operation beyond 1000 h; Table 3 for example presents the activity of Janus Ni-Co-P nanowires that have been demonstrated for 3000 h of OER (and of HER) in 1 M KOH (similar durability as for our 316L SS electrode). The results show that these materials fail to meet the activity of our stainless steel electrodes in similar operating



conditions, demonstrating that the activated 316L SS electrode exhibits a unique combination of high OER activity and long-term durability.

Now, the 316L SS electrodes tested so far have been activated in 5 M LiOH electrolyte and one would expect a different activity compared to electrodes activated in KOH electrolyte, because Li<sup>+</sup> cations likely insert into the NiO<sub>x</sub>-rich surface layer formed on the bulk 316L SS electrode in the former case, while K<sup>+</sup> are inserted in the latter (Figure 7). To get around this bias, 316L electrodes were activated in KOH electrolytes and then tested for the OER.

*Table 2: Kinetic parameters of the OER measured in 5 M LiOH, 1 M KOH and 5 M KOH electrolytes, on the 316L SS electrodes ex situ activated by the accelerated procedure in 5 M LiOH electrolyte.*

Electrolyte	Tafel slope / mV dec <sup>-1</sup>	Electrode potential / V vs. RHE	
		<i>Overvoltage / V</i>	
		@ <i>j</i> = 10 mA cm <sup>-2</sup>	@ <i>j</i> = 100 mA cm <sup>-2</sup>
5 M LiOH	48 – 150	1.67	1.81
		<i>0.44</i>	<i>0.58</i>
5 M KOH	35	1.56	1.60
		<i>0.33</i>	<i>0.37</i>
1 M KOH	42	1.53	1.56

		0.3	0.33
--	--	-----	------

*Table 3: Comparison of the OER performances measured 1 M KOH on the 316L SS electrodes ex situ activated by the accelerated procedure with several non-noble OER electrocatalysts of the literature. Specific experimental conditions may apply: \* extrapolation for a sample characterized in 2 M KOH; # measured in 0.1 M KOH; & measured at  $v = 100 \text{ mV s}^{-1}$  (non-stationary experiment)*

Electrocatalyst	Electrode potential / V vs. RHE  Overvoltage / V  @ $j = 100 \text{ mA cm}^{-2}$	Reference
<b>316L SS ex situ-activated</b>	<b>1.56</b>  <b>0.33</b>	<b>This work</b>
Oxidized S235steel	1.70 *  0.47	[73]
NiFe mixed oxides	1.63 #  0.40	[96]
Ni <sub>45</sub> Fe <sub>55</sub> /C nanostructures	1.55 &  0.32	[39]

FeMoO <sub>4</sub>	1.58 – 1.60  0.35 – 0.37	[97]
Co <sub>2.1</sub> Cu <sub>0.9</sub> O <sub>4</sub>	1.55  0.32	[98]
Co <sub>3</sub> O <sub>4</sub> (thermal)	1.73  0.50	[99]
Co <sub>3</sub> La <sub>x</sub> O <sub>4</sub> (microwave)	1.47  0.24	[22]
Co <sub>3</sub> Li <sub>x</sub> O <sub>4</sub> (sol-gel)	1.69  0.46	[100]
Electrodeposited mixed Co, Ni oxides	1.54  0.31	[101]
Janus Ni-Co-P nanowires	1.59  0.36	[60]
Co <sub>2</sub> ZnO <sub>4</sub>	1.53  0.30	[102]

### ***3.4. In situ activation of 316L SS electrodes in KOH electrolytes and their OER performances in KOH electrolytes***

Polarizing of a non-activated 316L SS electrode in 5 M KOH (Figure S1A in supporting information) shows comparable behavior to that in 5 M LiOH: the OER current density progressively increases for the first *ca.* 50 h and then plateaus, as a result of a surface-enrichment in nickel oxides during the first 250 h of test (Figure S1B). This film of nickel oxides has a rather rough texture (Figure S1C), an amorphous nature (Figure S2) and is composed of mixed oxides of Ni, Fe and Cr (Figure S3). The elemental analyses show that there is very little difference (in terms of composition in transition metal cations) in the active surface layer formed in KOH electrolyte (Table S1) compared to that formed in LiOH electrolyte [71].

The OER performances obtained after *in situ* activation in 5 M KOH (*ca.*  $j = 350 \text{ mA cm}^{-2}$  at  $E = 1.63 \text{ V vs. RHE}$ ,  $\eta = 0.4 \text{ V}$ , see Figure S1) can be compared to those obtained for the 316L electrode activated *ex situ* in 5 M LiOH and tested in 5 M KOH (*ca.*  $j = 550 \text{ mA cm}^{-2}$  at  $E = 1.63 \text{ V vs. RHE}$ ,  $\eta = 0.4 \text{ V}$ ) (see Figure 6). These data demonstrate that the *ex situ* activation in 5 M LiOH by the accelerated procedure is very efficient to prepare highly-active 316L electrodes for the OER, whatever the electrolyte composition of the medium in which the OER is performed. The next section will study whether electrodes prepared in an accelerated manner by *ex situ* activation in KOH are also very active for OER operation in LiOH electrolytes.

### ***3.5. OER performances in 5 M LiOH of 316L SS electrodes activated ex situ in 5 M KOH***

316L SS electrode activated *ex situ* in 5 M KOH before long-term operation in 5 M LiOH (Figure S4) exhibit initial performances which are roughly twice larger than those for a 316L SS

electrode activated *in situ* or *ex situ* in 5 M LiOH (see Figure 3). Based on Figure 7 and Table S1, these superior performances upon *ex situ* activation in 5 M KOH, may be accounted for by the presence of  $K^+$  in the hydrated oxide layers (instead of  $Li^+$ ), an enrichment of iron in the oxide layer and a larger active surface area (more details are available in supporting information). However, the catalytic layer formed by *ex situ* activation in 5 M KOH is not stable under long-term OER operation in 5 M LiOH electrolyte (Figure S4A); the surface charge related to the NiII/NiIII transition increases (Figure S4B) until the performances reached become comparable to those obtained after *in situ* activation in 5 M LiOH (see Figure 1 and Figure 3). In other words, the catalytic layer formed *ex situ* in 5 M KOH spontaneously and gradually evolves towards a different (and less active) state upon operation in LiOH electrolytes. This further confirms that only electrodes activated in the same environment than their environment of usage have stable performances in operation, even if activation in KOH yields larger initial performances of OER, whatever the medium of OER operation.

### ***3.5. Ex situ activation of 316L SS electrodes in KOH or LiOH electrolytes and their OER performances in KOH electrolytes***

A 316L stainless steel electrode *ex situ*-activated in 5 M KOH using the accelerated procedure described in section 3.2 exhibits equivalent behavior as that obtained after (much longer) *in situ* activation (Figure S5): the OER is stable over 1000+ hours of test. However, the electrode activated *ex situ* in 5 M LiOH is less active than that activated in 5 M KOH: activation in KOH is always preferable in terms of OER activity, whatever the electrolyte of final usage, probably because  $Li^+$  species are rather-irreversibly inserted in the NiO<sub>x</sub> layer, on the contrary to  $K^+$ .

## Conclusions

This paper demonstrates that it is possible to activate a 316L stainless steel electrode for OER without using hetero-elements and without making deposits on the surface of the electrode. The activation step is not only possible by spontaneous (usually slow) evolution of the surface composition/structure in the medium of OER operation, but it can be accelerated by using a properly-designed procedure (*e.g.* succession of potential steps of “oxidation” and “reduction” of the surface). The present approach fundamentally differs from that usually used in electrocatalysis, where compounds of tailored composition/structure/texture are added/deposited at a conductive substrate, their initial activity being optimal but their long-term stability not being guaranteed in the harsh operating conditions of an OER electrode (mechanical stress due to bubbles + highly-oxidizing conditions). In the approach detailed herein, the catalytic surface is created from the bulk components of the stainless steel electrode in experimental conditions that are close to those of usage, which is inherently more favorable to the long-term stability of the prepared surfaces.

It has been observed that  $\text{KOH}_{(\text{aq})}$  is a better electrolyte for activation than  $\text{LiOH}_{(\text{aq})}$ , whatever the final alkaline electrolyte used, but activating in the final electrolyte could be more practical and shall give the same results in the (very) long run. Besides, the OER performances reached in alkaline electrolytes for the materials activated by an *ex situ* accelerated procedure compare well to those obtained for the same materials activated *in situ*, the latter being a much more time-consuming procedure. In particular, the performance of activated 316L electrodes in KOH electrolytes compare favorably to those of state-of-the-art OER materials of the literature in

similar environments, the latter being prepared by depositing active layers at the surface of a conducting substrate. More importantly, the 316L electrodes did not show significant degradation in performance and surface over a few 100s of hours of OER operation, which should be highlighted given the very large current densities experienced (a few 100s of mA cm<sup>-2</sup>).

This suggests that stainless steel electrodes could prove to be good OER materials for use in alkaline water electrolyzers, even if this needs to be confirmed for longer duration of operation, larger active areas and non-flat surfaces (*e.g.* mesh, felts or grids). As a result, this paper opens the way to the development of highly-active and low-cost OER materials for the production of hydrogen (and in particular for the oxygen evolution reaction), but also as charging electrode in KOH-based metal-air batteries.

#### ASSOCIATED CONTENT

There is no associated content for this contribution.

#### AUTHOR INFORMATION

Florian Moureaux: moureaux.florian@hotmail.fr

Philippe Stevens: philippe.stevens@edf.fr

Gwénaëlle Toussaint: gwenaelle.toussaint@edf.fr

Marian Chatenet: Marian.Chatenet@grenoble-inp.fr; personal webpage : <http://lepmi.grenoble-inp.fr/personnels/m-chatenet-marian--429692.kjsp>; team webpage: <http://lepmi.grenoble-inp.fr/team-eip/interfacial-electrochemistry-and-processes-team-eip--754099.kjsp>

## ACKNOWLEDGEMENT

This work was performed within the framework of the Centre of Excellence of Multifunctional Architected Materials “CEMAM” n° AN-10-LABX-44-01. MC thanks the French Institut Universitaire de France “IUF” for its support and Stéphane Coindeau, Thierry Encinas, Frédéric Charlot and Grégory Berthomé (from the Consortium des Moyens Technologiques Communs (CMTC) of Grenoble-INP) for the XRD, FEG-SEM and XPS characterizations, as well as Michel Mermoux for the Raman analyses.

## REFERENCES

- [1] A.F. Ghoniem, *Prog. Energ. Comb. Sci.* 37 (2011) 15-51.
- [2] P.T. Moseley, J. Garche, *Electrochemical Energy Storage for Renewable Sources and Grid Balancing*, Elsevier, Amsterdam, 2015.
- [3] J.M. Tarascon, M. Armand, *Nature* 414 (2001) 359-367.
- [4] P.G. Bruce, S.A. Freunberger, L.J. Hardwick, J.M. Tarascon, *Nat. Mater.* 11 (2012) 19-29.
- [5] F. Meng, H. Zhong, D. Bao, J. Yan, X. Zhang, *J. Am. Chem. Soc.* 138 (2016) 10226-10231.
- [6] M. Götz, J. Lefebvre, F. Mörs, A. McDaniel Koch, F. Graf, S. Bajohr, R. Reimert, T. Kolb, *Renew. Energy* 85 (2016) 1371-1390.
- [7] C. Mittelsteadt, T. Norman, M. Rich, J. Willey, in: P.T. Moseley, J. Garche (Eds.), *Electrochemical Energy Storage for Renewable Sources and Grid Balancing*, Elsevier, Amsterdam, 2015, pp. 159-181.
- [8] M. Carmo, D.L. Fritz, J. Mergel, D. Stolten, *Int. J. Hydrogen Energy* 38 (2013) 4901-4934.



- [9] R. Tunold, A.T. Marshall, E. Rasten, M. Tsyppkin, L.E. Owe, S. Sunde, Materials for electrocatalysis of oxygen evolution process in PEM water electrolysis cells, *ECS Trans.*, 23 ed., 2010, pp. 103-117.
- [10] S.A. Grigoriev, P. Millet, V.N. Fateev, *J. Power Sources* 177 (2008) 281-285.
- [11] I.A. Lervik, M. Tsyppkin, L.E. Owe, S. Sunde, *J. Electroanal. Chem.* 645 (2010) 135-142.
- [12] S. Sunde, I.A. Lervik, M. Tsyppkin, L.E. Owe, *Electrochim. Acta* 55 (2010) 7751-7760.
- [13] F. Ye, J. Li, X. Wang, T. Wang, S. Li, H. Wei, Q. Li, E. Christensen, *Int. J. Hydrogen Energy* 35 (2010) 8049-8055.
- [14] L.E. Owe, M. Tsyppkin, K.S. Wallwork, R.G. Haverkamp, S. Sunde, *Electrochim. Acta* 70 (2012) 158-164.
- [15] L. Wang, Y. Zhu, Z. Zeng, C. Lin, M. Giroux, L. Jiang, Y. Han, J. Greeley, C. Wang, J. Jin, *Nano Energy* 31 (2017) 456-461.
- [16] S. Cherevko, T. Reier, A.R. Zeradjanin, Z. Pawolek, P. Strasser, K.J.J. Mayrhofer, *Electrochem. Commun.* 48 (2014) 81-85.
- [17] S. Cherevko, A. Topalov, A. Zeradjanin, G. Keeley, K.J. Mayrhofer, *Electrocatal.* 5 (2014) 235-240.
- [18] S. Cherevko, A.R. Zeradjanin, G.P. Keeley, K.J.J. Mayrhofer, *J. Electrochem. Soc.* 161 (2014) H822-H830.
- [19] S. Cherevko, S. Geiger, O. Kasian, N. Kulyk, J.P. Grote, A. Savan, B.R. Shrestha, S. Merzlikin, B. Breitbach, A. Ludwig, K.J.J. Mayrhofer, *Catal. Today* 262 (2016) 170-180.
- [20] S. Geiger, O. Kasian, A.M. Mingers, K.J.J. Mayrhofer, S. Cherevko, *Sci. Rep.* 7 (2017).
- [21] D.E. Hall, *J. Electrochem. Soc.* 132 (1985) 41C-48C.
- [22] R.N. Singh, D. Mishra, Anindita, A.S.K. Sinha, A. Singh, *Electrochem. Commun.* 9 (2007) 1369-1373.
- [23] S. Marini, P. Salvi, P. Nelli, R. Pesenti, M. Villa, M. Berrettoni, G. Zangari, Y. Kiros, *Electrochim. Acta* 82 (2012) 384-391.
- [24] W.F. Chen, C.H. Wang, K. Sasaki, N. Marinkovic, W. Xu, J.T. Muckerman, Y. Zhu, R.R. Adzic, *Energy Environ. Sci.* 6 (2013) 943-951.
- [25] X. Wang, Y.V. Kolen'Ko, X.Q. Bao, K. Kovnir, L. Liu, *Angew. Chem. Int. Ed.* 54 (2015) 8188-8192.
- [26] Y. Yang, D. Xu, Q. Wu, M. Xiang, P. Diao, *Beijing Hangkong Hangtian Daxue Xuebao/Journal of Beijing University of Aeronautics and Astronautics* 41 (2015) 2158-2165.
- [27] M.K. Bates, Q. Jia, H. Doan, W. Liang, S. Mukerjee, *ACS Catal.* 6 (2016) 155-161.
- [28] Y.H. Chung, K. Gupta, J.H. Jang, H.S. Park, I. Jang, Y.K. Lee, S.C. Lee, S.J. Yoo, *Nano Energy* 26 (2016) 496-503.
- [29] J. Li, X. Zhou, Z. Xia, W. Gao, Y. Ma, Y. Qu, *ACS Applied Materials and Interfaces* 8 (2016) 10826-10834.
- [30] K. Liu, W. Zhang, F. Lei, L. Liang, B. Gu, Y. Sun, B. Ye, W. Ni, Y. Xie, *Nano Energy* 30 (2016) 810-817.
- [31] Y.Y. Ma, C.X. Wu, X.J. Feng, H.Q. Tan, L.K. Yan, Y. Liu, Z.H. Kang, E.B. Wang, Y.G. Li, *Energy Environ. Sci.* 10 (2017) 788-798.
- [32] T. Wang, X. Wang, Y. Liu, J. Zheng, X. Li, *Nano Energy* 22 (2016) 111-119.
- [33] J. Divisek, J. Mergel, H. Schmitz, *Int. J. Hydrogen Energy* 7 (1982) 695-701.
- [34] H. Wendt, G. Imarisio, *J. Appl. Electrochem.* 18 (1988) 1-14.
- [35] A. Ursúa, L.M. Gandía, P. Sanchis, *Proceedings of the IEEE* 100 (2012) 410-426.

- [36] J. Mergel, W. Maier, D. Stolten, Hydrogen production by water electrolysis: A review of the current status and future trends, 20th World Hydrogen Energy Conference, WHEC 2014, 2014, pp. 1165-1169.
- [37] F. Dionigi, P. Strasser, *Advanced Energy Materials* 6 (2016).
- [38] M. Görlin, M. Gliech, J.F. De Araújo, S. Dresp, A. Bergmann, P. Strasser, *Catal. Today* 262 (2016) 65-73.
- [39] M. Gorlin, J.F. De Araujo, H. Schmies, D. Bernsmeier, S. Dresp, M. Gliech, Z. Jusys, P. Chernev, R. Kraehnert, H. Dau, P. Strasser, *J. Am. Chem. Soc.* 139 (2017) 2070-2082.
- [40] J. Wang, K. Li, H.-x. Zhong, D. Xu, Z.-l. Wang, Z. Jiang, Z.-j. Wu, X.-b. Zhang, *Angewandte Chemie International Edition* 54 (2015) 10530-10534.
- [41] P.W. Menezes, A. Indra, D. González-Flores, N.R. Sahraie, I. Zaharieva, M. Schwarze, P. Strasser, H. Dau, M. Driess, *ACS Catal.* 5 (2015) 2017-2027.
- [42] P.W. Menezes, A. Indra, N.R. Sahraie, A. Bergmann, P. Strasser, M. Driess, *ChemSusChem* 8 (2015) 164-171.
- [43] P.W. Menezes, A. Indra, N.R. Sahraie, A. Bergmann, P. Strasser, M. Driess, *ChemSusChem* 8 (2015) 164-167.
- [44] F. Dionigi, T. Reier, Z. Pawolek, M. Gliech, P. Strasser, *ChemSusChem* 9 (2016) 962-972.
- [45] M. Gliech, A. Bergmann, C. Spöri, P. Strasser, *Journal of Energy Chemistry* 25 (2016) 278-281.
- [46] C.C.L. McCrory, S. Jung, J.C. Peters, T.F. Jaramillo, *J. Am. Chem. Soc.* 135 (2013) 16977-16987.
- [47] S. Jung, C.C.L. McCrory, I.M. Ferrer, J.C. Peters, T.F. Jaramillo, *J. Mater. Chem. A* 4 (2016) 3068-3076.
- [48] M.K. Bates, Q. Jia, H. Doan, W. Liang, S. Mukerjee, *ACS Catal.* (2015).
- [49] N. Li, W.Y. Xia, J. Wang, Z.L. Liu, Q.Y. Li, S.Z. Chen, C.W. Xu, X.H. Lu, *J. Mater. Chem. A* 3 (2015) 21308-21313.
- [50] M.H. Miles, Y.H. Huang, S. Srinivasan, *J. Electrochem. Soc.* 125 (1978) 1931-1934.
- [51] V.A. Alves, L.A. Da Silva, J.F.C. Boodts, *Electrochim. Acta* 44 (1998) 1525-1534.
- [52] Y.L. Lo, S.C. Chou, B.J. Hwang, *J. Appl. Electrochem.* 26 (1996) 733-740.
- [53] E. Rios, P. Chartier, J.L. Gautier, *Solid State Sciences* 1 (1999) 267-277.
- [54] R. Berenguer, J.M. Sieben, C. Quijada, E. Morallón, *ACS Applied Materials and Interfaces* 6 (2014) 22778-22789.
- [55] X.X. Ma, X.Q. He, *RSC Adv.* 6 (2016) 50017-50026.
- [56] E. Laouini, M. Hamdani, M.I.S. Pereira, J. Douch, M.H. Mendonça, Y. Berghoute, R.N. Singh, *J. Appl. Electrochem.* 38 (2008) 1485-1494.
- [57] M. Dinamani, P.V. Kamath, *J. Appl. Electrochem.* 30 (2000) 1157-1161.
- [58] L.F. Arenas, C. Ponce de León, F.C. Walsh, *Electrochem. Commun.* 77 (2017) 133-137.
- [59] A. Balram, H. Zhang, S. Santhanagopalan, *ACS Applied Materials and Interfaces* 9 (2017) 28355-28365.
- [60] W. Li, X. Gao, X. Wang, D. Xiong, P.-P. Huang, W.-G. Song, X. Bao, L. Liu, *J. Power Sources* 330 (2016) 156-166.
- [61] P.N. Ross, H. Sokol, *J. Electrochem. Soc.* 131 (1984) 1742-1750.
- [62] N. Staud, P.N. Ross, *J. Electrochem. Soc.* 133 (1986) 1079-1084.
- [63] P.N. Ross, M. Sattler, *J. Electrochem. Soc.* 135 (1988) 1464-1470.
- [64] N. Staud, H. Sokol, P.N. Ross, *J. Electrochem. Soc.* 136 (1989) 3570-3576.

- [65] A. Zadick, L. Dubau, M. Chatenet, U. Demirci, A. Serov, P. Atanassov, *ECS Trans.* 69 (2015) 553-558.
- [66] A. Zadick, L. Dubau, N. Sergent, G. Berthomé, M. Chatenet, *ACS Catal.* 5 (2015) 4819-4824.
- [67] A. Zadick, L. Dubau, U.B. Demirci, M. Chatenet, *J. Electrochem. Soc.* 163 (2016) F781-F787.
- [68] I. Roche, E. Chainet, J. Vondrak, M. Chatenet, *J. Appl. Electrochem.* 38 (2008) 1195-1201.
- [69] M. Chatenet, L. Génies-Bultel, M. Aurousseau, R. Durand, F. Andolfatto, *J. Appl. Electrochem.* 32 (2002) 1131-1140.
- [70] M. Chatenet, M. Aurousseau, R. Durand, F. Andolfatto, *J. Electrochem. Soc.* 150 (2003) D47-D55.
- [71] F. Moureaux, P. Stevens, G. Toussaint, M. Chatenet, *J. Power Sources* 229 (2013) 123-132.
- [72] H. Schäfer, S.M. Beladi-Mousavi, L. Walder, J. Wollschläger, O. Kuschel, S. Ichilmann, S. Sadaf, M. Steinhart, K. Küpper, L. Schneider, *ACS Catal.* 5 (2015) 2671-2680.
- [73] H. Schäfer, K. Küpper, J. Wollschläger, N. Kashaev, J. Hardege, L. Walder, S. Mohsen Beladi-Mousavi, B. Hartmann-Azanza, M. Steinhart, S. Sadaf, F. Dorn, *ChemSusChem* 8 (2015) 3099-3110.
- [74] H. Schäfer, S. Sadaf, L. Walder, K. Kuepper, S. Dinklage, J. Wollschläger, L. Schneider, M. Steinhart, J. Hardege, D. Daum, *Energy Environ. Sci.* 8 (2015) 2685-2697.
- [75] H. Schäfer, D.M. Chevrier, K. Kuepper, P. Zhang, J. Wollschlaeger, D. Daum, M. Steinhart, C. Heß, U. Krupp, K. Müller-Buschbaum, J. Stangl, M. Schmidt, *Energy Environ. Sci.* 9 (2016) 2609-2622.
- [76] H. Schäfer, D.M. Chevrier, P. Zhang, J. Stangl, K. Müller-Buschbaum, J.D. Hardege, K. Kuepper, J. Wollschläger, U. Krupp, S. Dühnen, M. Steinhart, L. Walder, S. Sadaf, M. Schmidt, *Advanced Functional Materials* 26 (2016) 6402-6417.
- [77] H. Zhong, J. Wang, F. Meng, X. Zhang, *Angewandte Chemie International Edition* 55 (2016) 9937-9941.
- [78] H. Schäfer, M. Chatenet, *ACS Energy Letters* (2018).
- [79] D. Tang, O. Mabayoje, Y. Lai, Y. Liu, C.B. Mullins, *ChemistrySelect* 2 (2017) 2230-2234.
- [80] J.S. Sagu, K.G.U. Wijayantha, M. Bohm, S. Bohm, T. Kumar Rout, *ACS Applied Materials and Interfaces* 8 (2016) 6277-6285.
- [81] Z. Wu, W. Qiu, Y. Chen, Y. Luo, Y. Huang, Q. Lei, S. Guo, P. Liu, M.S. Balogun, Y. Tong, *J. Mater. Chem. A* 5 (2017) 756-764.
- [82] A. Serov, I.V. Zenyuk, C.G. Arges, M. Chatenet, *J. Power Sources* 375 (2018) 149-157.
- [83] N. Spataru, C. Terashima, K. Tokuhira, I. Sutanto, D.A. Tryk, S.-M. Park, A. Fujishima, *J. Electrochem. Soc.* 150 (2003) E337-E341.
- [84] G. Gardner, J. Al-Sharab, N. Danilovic, Y.B. Go, K. Ayers, M. Greenblatt, G. Charles Dismukes, *Energy Environ. Sci.* 9 (2016) 184-192.
- [85] F. Moureaux, Etude des réactions mettant en jeu l'oxygène dans un système électrochimique lithium-air aqueux rechargeable électriquement, LEPMI, Grenoble-INP, Grenoble, 2011.
- [86] N.K. Singh, J.P. Singh, R.N. Singh, *Int. J. Hydrogen Energy* 27 (2002) 895-903.
- [87] B.G. Pound, R.P. Singh, D.D. Macdonald, *J. Power Sources* 18 (1986) 1-31.

- [88] J.O. Bockris, A.K.N. Reddy, B. Rao, *J. Electrochem. Soc.* 113 (1966) 1133-1144.
- [89] M.M. Jaksic, *Solid State Ionics* 136-137 (2000) 733-746.
- [90] F. Micoud, Influence d'un support MO<sub>x</sub> (M = W, Ti) sur les propriétés électrocatalytiques de nanoparticules de platine, LEPMI, Grenoble-INP, Grenoble, 2009, p. 213.
- [91] M. Chatenet, M. Aurousseau, R. Durand, *Ind. Eng. Chem. Res.* 39 (2000) 3083-3089.
- [92] M. Chatenet, M. Aurousseau, R. Durand, *Electrochim. Acta* 45 (2000) 2823-2827.
- [93] D.M. Constantin, E.M. Rus, L. Oniciu, L. Ghergari, *J. Power Sources* 74 (1998) 188-197.
- [94] C. Greaves, M.A. Thomas, M. Turner, *J. Power Sources* 12 (1984) 195-202.
- [95] F. Moureaux, P. Stevens, M. Chatenet, *Electrocatal.* 4 (2013) 123-133.
- [96] M. Görlin, P. Chernev, J.F. De Araújo, T. Reier, S. Dresch, B. Paul, R. Krähnert, H. Dau, P. Strasser, *J. Am. Chem. Soc.* 138 (2016) 5603-5614.
- [97] R.N. Singh, Madhu, R. Awasthi, S.K. Tiwari, *Int. J. Hydrogen Energy* 34 (2009) 4693-4700.
- [98] B. Marsan, N. Fradette, G. Beaudoin, *J. Electrochem. Soc.* 139 (1992) 1889-1896.
- [99] S.P. Singh, S. Samuel, S.K. Tiwari, R.N. Singh, *Int. J. Hydrogen Energy* 21 (1996) 171-178.
- [100] F. Švegl, B. Orel, I. Grabec-Švegl, V. Kaučič, *Electrochim. Acta* 45 (2000) 4359-4371.
- [101] G. Wu, N. Li, D.R. Zhou, K. Mitsuo, B.Q. Xu, *J. Solid State Chem.* 177 (2004) 3682-3692.
- [102] B. Chi, J. Li, X. Yang, H. Lin, N. Wang, *Electrochim. Acta* 50 (2005) 2059-2064.