



HAL
open science

Influence of water spraying on an oscillating channel

Anne Bouvet, Xavier Pelorson, Annemie van Hirtum

► **To cite this version:**

Anne Bouvet, Xavier Pelorson, Annemie van Hirtum. Influence of water spraying on an oscillating channel. *Journal of Fluids and Structures*, 2020, 93, pp.102840. 10.1016/j.jfluidstructs.2019.102840 . hal-02415110

HAL Id: hal-02415110

<https://hal.univ-grenoble-alpes.fr/hal-02415110>

Submitted on 28 May 2020

HAL is a multi-disciplinary open access archive for the deposit and dissemination of scientific research documents, whether they are published or not. The documents may come from teaching and research institutions in France or abroad, or from public or private research centers.

L'archive ouverte pluridisciplinaire **HAL**, est destinée au dépôt et à la diffusion de documents scientifiques de niveau recherche, publiés ou non, émanant des établissements d'enseignement et de recherche français ou étrangers, des laboratoires publics ou privés.

Influence of water spraying on an oscillating channel

Anne Bouvet, Xavier Pelorson, Annemie Van Hirtum¹

LEGI, UMR CNRS 5519, Grenoble Alpes University, France

Abstract

The influence of surface hydration on the fluid-structure instability underlying vocal folds auto-oscillation during voiced speech sound production is an open research question. In this work the influence of homogeneous water spraying on an oscillating channel is investigated experimentally using several vocal folds replicas. Changes to glottal flow features are systematically quantified for a rigid replica with forced oscillation. Changes to auto-oscillation features are systematically quantified by analysing the pressure measured upstream from deformable replicas. During auto-oscillation it is observed for increasing water volume that the first harmonic frequency decreases, its amplitude increases, cycle-to-cycle as well as overall fluctuations increase and the closing-opening asymmetry changes. Nevertheless, the magnitude of these effects differs between deformable replicas so that further systematic investigation is needed to quantify observations as well as to explore underlying mechanisms. Flow tendencies observed on all replicas support that water spraying affects the glottal flow rather than structural properties. This is an important finding for future modeling of the effect of water spraying on the fluid-structure interaction.

Keywords: Two-phase flow, Vocal fold surface hydration, Mechanical vocal folds replicas, fluid-structure interaction

¹annemie.vanhirtum@univ-grenoble-alpes.fr

1. Introduction

The surface of human vocal folds (VF), illustrated in Fig. 1, is hydrated with a liquid layer [1, 2]. It is established from observations on human speakers and on cadaver larynges that good surface hydration may diminish phonotraumatic VF lesions [1, 3] and depends on a combination of environmental factors [4], vocal effort [5, 6], life style [7, 8] and general health state [9]. Artificial saliva sprays are developed to remedy VF surface hydration [10, 11, 4] so that liquid sprays and nebulisation techniques are common in (re-)hydration studies focusing on voice properties [12, 11, 13]. One of the physical consequences attributed to surface hydration is to reduce the auto-oscillation onset pressure, *i.e.* the minimum subglottic pressure required to sustain VF auto-oscillation or phonation [14, 3, 15, 16]. Other voice auto-oscillation properties are sensitive to hydration such as oscillation frequency f_0 , closing quotient, speed quotient and cycle-to-cycle perturbations jitter and shimmer [12, 2, 13, 17]. Nevertheless, different tendencies of these features are described in literature stressing the need for physical studies. So far, few physical studies of the VF instability reported in literature deal with the effect of surface hydration.

From a physical point of view, VF auto-oscillation during voiced speech sound production is due to a fluid-structure (FS) instability in the larynx fol-

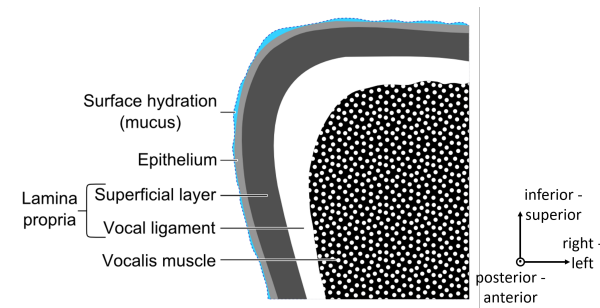


Figure 1: Illustration of layered structure of human VF with surface hydration in medio-frontal plane. Based on [18].

lowing the interaction of airflow coming from the lungs and the enveloping VF tissues. This FS interaction (FSI) mechanism can be represented as a deformable VF with one mechanical degree of freedom acted on by the flow while assuming a constant time delay associated with the time needed for the deformation wave to travel along the VF surface [19, 20, 21, 22]. The variation of transverse area $A(t)$ associated with each streamwise mass position is then modeled considering the equation of transverse motion (left hand side) which is excited from its transverse rest position A_0 by an acting fluid force F_A (right hand side) so that

$$m\ddot{A}(t) + r\dot{A}(t) + k(A(t) - A_0) \approx F_A(t), \quad (1)$$

with vibrating mass m , damping r and stiffness k . Recently, it was shown using
 20 a motion driven rigid VF replica that the glottal pressure drop is affected after water spraying [23]. The mean flow was affected by the air-water mixture during the opening and closing phase of the glottal cycle in different ways leading to an altered opening-closing asymmetry. Therefore, fluid force $F_A(t)$ in Eq. (1) is likely to depend on the sprayed water volume which in turn affects the fluid-
 25 structure interaction and hence the VF's auto-oscillation.

In this work, flow features and their perturbation often associated with voice quality are systematically quantified from experiments mimicking water spraying on oscillating vocal folds firstly using a motion driven rigid VF replica and
 30 secondly using deformable VF replicas. This way hydration after usage of an artificial saliva spray is mimicked. Experiments with the motion driven rigid VF replicas allow to systematically quantify flow features within the glottis as the pressure within the constriction is analysed. Quantification is of interest as no such features were quantified in [23] and glottal flow features are directly
 35 related to $F_A(t)$ in Eq. (1). Experiments with deformable mechanical VF replicas allow to systematically quantify flow features during auto-oscillation as the upstream pressure is analyzed. Tendencies observed on the quantified features for the glottal flow (rigid VF replica) and during auto-oscillation (deformable VF replicas) are considered in order to assess that in terms of Eq. (1) water

40 spraying affects the flow expressed by $F_A(t)$ rather than mechanical properties
 m , r and k . This is of interest for future modelling studies of the fluid-structure
interaction with surface hydration due to liquid spraying. In the following,
vocal fold replicas are described in Section 2, the use of water as a spraying
liquid is motivated in Section 3 and the experimental procedures are detailed
45 in Section 4. Experimental results are presented in Section 6 and discussed in
Section 7. The conclusion is formulated in Section 8.

2. Dynamic mechanical VF replicas

Different dynamic mechanical VF replicas are assessed allowing to experi-
50 mentally mimic the glottal area variation during human phonation expressed
in Eq. (1): motion driven rigid (duralium, neutral water wet wettability) MDR
in Section 2.1 [24, 23], deformable silicone casts (M5, MRI and EPI) in Sec-
tion 2.2 [25, 26, 27, 28, 29, 30, 31] and deformable pressurized latex tube PLT
in Section 2.3 [32, 20, 22]. Both deformable VF replica types are of interest
55 for physical studies. Deformable silicone (moderately non-water wet wettabil-
ity) VF replicas allow to represent the multi-layer structure of human VF's
with different degree of complexity whereas pressurized latex (neutral water
wet wettability) tubes allow to mimic the variation of human VF's elasticity in
a systematic way. The motion driven rigid MDR replica allows to observe the
60 glottal flow which can not be achieved for deformable VF replicas.

Water is not absorbed by any of the mechanical VF replicas with smooth sur-
face, either rigid or deformable. Consequently, their structural properties (m , r
and k in Eq. (1)) are not affected by absorption when in contact with water.

65 Each of the assessed dynamic mechanical VF replicas (posterior-anterior
width w and inferior-superior height L_z) is positioned so that glottal-like area
 A_c , *i.e.* the spacing between both VFs, is situated in a transverse horizontal
plane in such a way that the interior edges of the right and left VFs are paral-

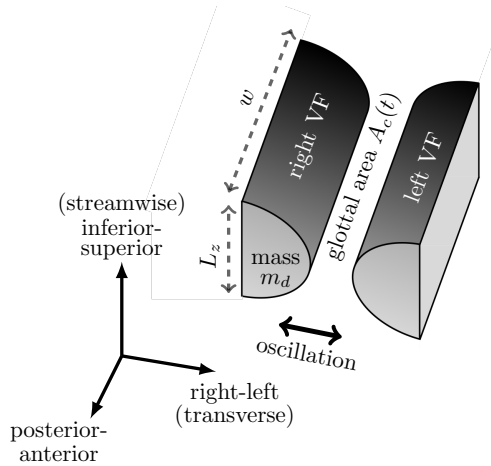


Figure 2: Oscillating VF replicas: width w , height L_z , glottal area $A_c(t)$ and mass m_d .

lel to the posterior-anterior axis as depicted in Fig. 2. The glottal area $A_c(t)$
 70 is varied from its initial value A_0 during VFs oscillation along the transverse
 direction (right-left axis). Auto-oscillation occurs using deformable VF replicas
 (M5, MRI, EPI and PLT) due to a fluid-structure interaction with the airflow
 passing through the glottal area. Forced oscillation is imposed using the rigid
 VF replica (MDR). An overview of VF properties for used replicas and for a
 75 male adult is given in Table 1: L_z , w , $A_{c,max}$, A_0 and m_d with maximum glottal
 area $A_{c,max}$ so that $A_c(t) \leq A_{c,max}$ and initial glottal area $A_c(t = 0) = A_0$.

2.1. Motion driven rigid: MDR

The motion driven rigid (MDR) VF replica depicted in Fig. 3 consists of
 80 two rigid parallel half cylinders (radius 10 mm, $L_z = 20$ mm, $w = 30$ mm),
 one of which is forced into motion by an eccentric motor [36, 24]. Sinusoidal
 movement of the rectangular gap between both half cylinders is imposed with
 forcing frequency $f_c \in \{1, 6, 10\}$ Hz and constant forcing amplitude. The im-
 posed time-varying minimum spacing $h_c(t)$ ($0 \leq h_c \leq 0.91$ mm) is measured by
 85 means of an optical sensor (OPB700, accuracy ± 0.01 mm), so that the time-

Table 1: VF replicas and human: dimensions and mass.

	L_z [*]	w [†]	$A_{c,max}$ [‡]	A_0 [∨]	m_d [□]
MDR	20.0	30.0	60	–	–
M5	10.7	17.0	85	<10	2.3
MRI	10.0	18.0	85	<10	1.8
EPI	10.2	17.0	85	<10	1.9
PLT	12.0	25.0	100	18-74	2.1
adult [◁]	4-8	15-25	50	<20	–

* L_z : inferior-superior VF length, [mm]

† w : posterior-anterior VF width, [mm]

‡ upper limit for glottal area as $\max(A_c(t)) \leq A_{c,max}$, [mm²]

∨ $A_0 = A_c(t = 0)$: initial glottal area, [mm²]

□ m_d : VF mass for $V_L = 0$ mL, [g]

◁ male adult [33, 34, 35]

varying glottal area yields $A_c(t) = h_c(t) \cdot w$ and $A_{c,max} = 60$ mm² (Table 1). A pressure tap is foreseen in the fixed VF to measure constriction pressure $P_c(t)$ at minimum spacing.

90 2.2. Deformable silicone casts: M5, MRI and EPI

Three deformable silicone VF replicas – labeled M5, MRI and EPI – are obtained following the procedures detailed in [25, 26, 30]. Each VF consists of an overlay of two (M5), three (MRI) or four (EPI) molding layers (silicone thinner and two-part A&B Ecoflex 03-00, Smooth-On, Inc., Easton, PA) in order to
95 mimic the multi-layered human VF structure (Fig. 4).

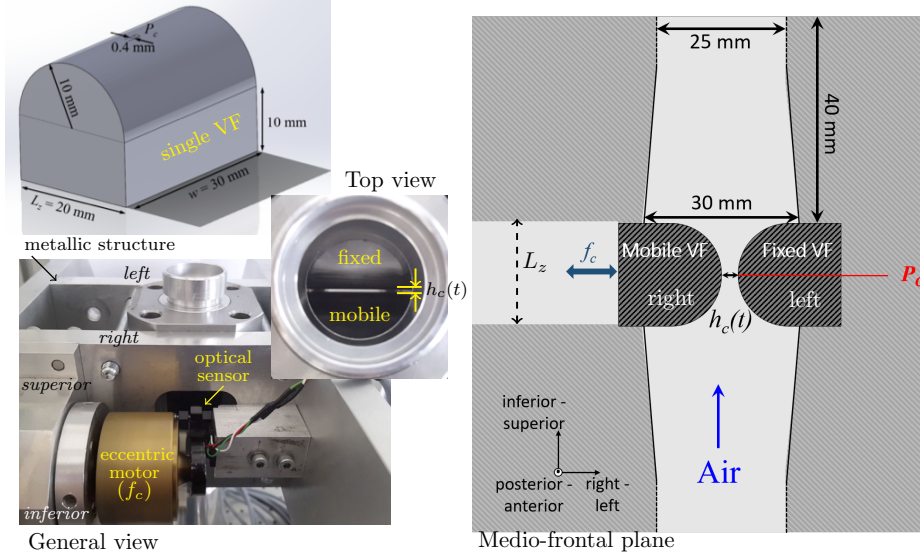


Figure 3: Motion driven rigid (MDR) VF replica.

2.2.1. Different molding layers

Each molding layer has a different ecoflex-to-silicone mixing ratio \mathcal{M} so that from literature [33, 37, 38, 39, 40, 26] is seen (Table 2) that the order of magnitude of Young moduli \mathcal{E} (tensile tests, INSTRON 3369 electro-mechanical press) is consistent with the thyroarytenoid (vocalis) muscle, the superficial layer of the lamina propria (Reinke's space) and epithelium layer whereas it is underestimated for the ligament (intermediate and deep layers of the lamina propria) since no tension is applied in the deep layer. Note that \mathcal{E} -values are consistent with the ones reported in literature [25]. Each VF is mounted on a backing layer (silicone thinner and two-part A&B Dragon Skin FX Pro, Smooth-On, Inc., Easton, PA, ratio \mathcal{M} 1:1, thickness 4 mm) in order to attach the replica to its rigid support, *i.e.* region outside of the black frames in the top views of Fig. 4.

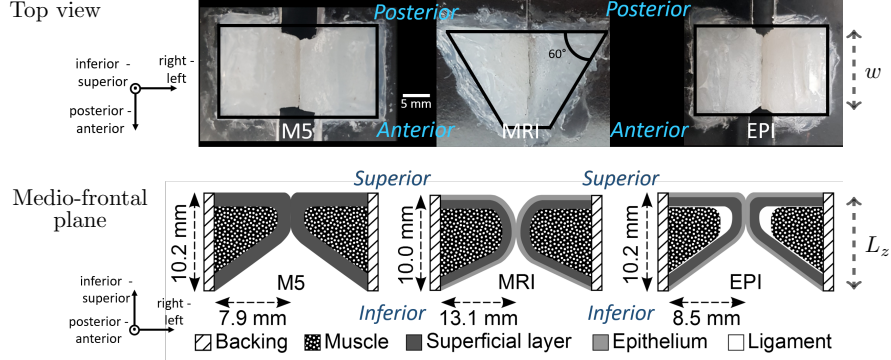


Figure 4: Deformable silicone VF replicas M5, MRI and EPI.

110 2.2.2. M5, MRI and EPI VF replicas

Different multi-layer compositions and geometrical casts are then used to mold the M5, MRI and EPI VF replicas (Fig. 4 and Table 2). The M5 VF replica is a two-layer model reproducing the muscle and superficial layer within the so called M5 geometrical cast [41]. The geometrical cast used to obtain the MRI
 115 VF replica is more complex and realistic as the cast is derived from magnetic resonance imaging data of a human VF [25, 30]. The realistic VF geometry is characterised by a triangular shape (sharp angle 60°) in the transverse plane (top view in Fig. 4) compared to the rectangular shaped M5 geometry. In addition, the MRI VF replica has a three-layer structure by adding a third thin and stiff
 120 surface layer representing the epithelium to the two-layer structure of the M5 VF replica. Note that compared to MRI VF replicas presented in literature [25, 30] an epithelium layer is added in this work. Finally, a four-layered EPI VF replica is obtained by inserting an extremely soft deep layer between the muscle and superficial layer of the three-layered structure used for the MRI VF replica [26].
 125 The EPI VF replica cast is inspired on the M5 geometry so that it is a scaled version of the M5 VF replica.

Dimensions and masses for all silicone VF replicas are summarized in Table 1: initial glottal area $A_0 < 10 \text{ mm}^2$, $A_{c,max} = 85 \text{ mm}^2$, inferior-superior

Table 2: Layer properties in human and in silicone VF replicas (M5^{*}, MRI[†], EPI[‡]) [33, 37, 38, 39, 40, 26]: Young modulus \mathcal{E} , ecoflex-to-silicone ratio \mathcal{M} , layer thickness l_d .

Layer	Male adult		VF replica		
	\mathcal{E} [kPa]	l_d [mm]	\mathcal{E} [kPa]	\mathcal{M} [-]	l_d [mm]
Muscle ^{ES}	8-29	6.0	10.4 [*] 4.9 [†] 21.9 [‡]	1:2	6.4 [*] 10.0 [†] 6.4 [‡]
Superficial ^{ES}	2-9	0.6	4.9 [*] 0.2 ^{†,‡}	1:4	1.5 [*] 3.0 [†] 1.0 [‡]
Ligament ^{ES}	10-45	0.8	4.9 [‡]	1:8	1.0 [‡]
Epithelium ^{DS}	40-60	0.1	52 ^{†,‡}	1:1	0.1 ^{†,‡}

* M5: muscle and superficial

† MRI: muscle, superficial and epithelium

‡ EPI: muscle, superficial, ligament and epithelium

^{ES} Ecoflex/Silicone mixture

^{DS} Dragonskin/Silicone mixture

length $L_z \approx 10$ mm, posterior-anterior width $w \approx 17$ mm and silicone VF
130 masses $m_d < 2.5$ g.

2.3. Deformable pressurized latex tube: PLT

The deformable pressurized latex tube (PLT) VF replica ($L_z = 12$ mm, $w = 25$ mm, mass $m_d = 2.1$ g in Table 1) is illustrated in Fig. 5 and detailed
135 in [22, 42]. Each VF consists of a latex tube (diameter 11 mm, thickness 0.2 mm) which is pressurized (P_{PLT}) by filling it with distilled water which is connected to a water column whose height can be changed. Therefore, the elasticity of each VF can be varied by changing the internal pressure P_{PLT} of each latex tube. Pressurised VFs are mounted in a metallic holder in a way that the initial position
140 of each VF with respect to the centerline of the attached downstream and upstream tube, and hence the spacing between both VF's, can be varied using four micrometer screws (Mitutoyo 153-101, accuracy 0.01 mm, range 5 mm).

It is noted that initial glottal area A_0 is the combined result of imposed inter-

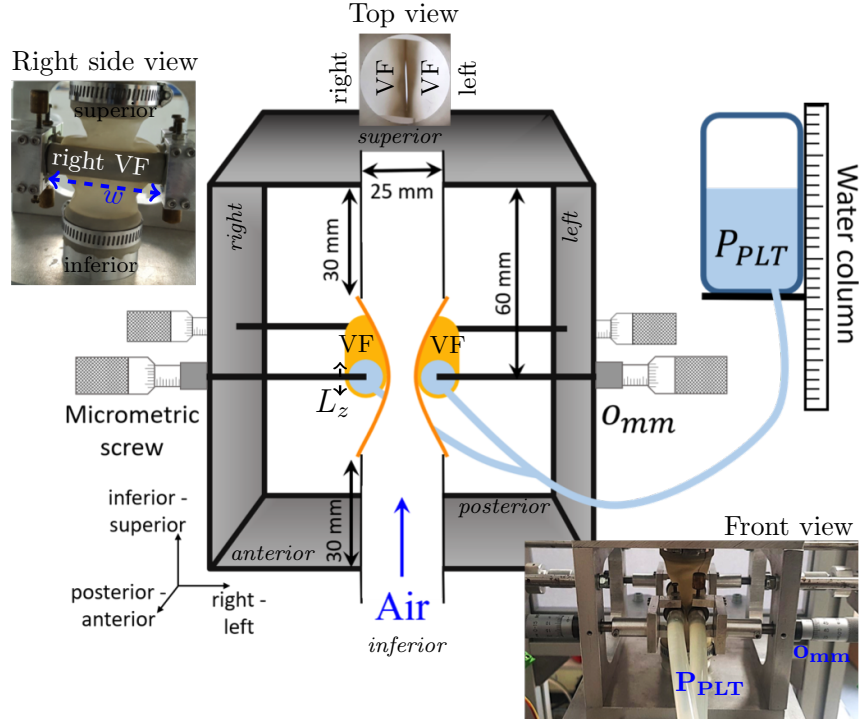


Figure 5: Deformable pressurized latex tube (PLT) VF replica and conditions (P_{PLT}, o_{mm}) .

nal pressure P_{PLT} and the position of micrometer screws o_{mm} . For brevity, PLT
 145 conditions are denoted as (P_{PLT}, o_{mm}) . Concretely, 5 different PLT VF replica
 conditions are considered – indicated as $(2300, 0)$, $(2800, 0)$, $(3300, 0)$, $(2800, 1)$
 and $(2800, 2)$ – so that either o_{mm} or P_{PLT} deflects from condition $(2800, 0)$.
 The initial area A_0 ranges from 18 mm^2 up to 74 mm^2 and $A_{c,max} = 100 \text{ mm}^2$
 as indicated in Table 1.

150

3. Hydration liquid: water

Distilled water (density $\rho_L = 998 \text{ kg}\cdot\text{m}^{-3}$, dynamic viscosity coefficient
 $\mu_L = 1.0 \times 10^{-3} \text{ Pa}\cdot\text{s}$, temperature $22 \pm 2 \text{ }^\circ\text{C}$) is used as hydration liquid fluid.
 Water has well known properties so that it is a good reference for future studies

155 involving different fluids.

Compared to airway mucus [43, 44] and saliva [10, 45], water has similar density, but a reduced (up to 2000-fold for airway mucus of healthy subjects) dynamic viscosity. Despite the difference in visco-elastic properties and the
160 lack of salinity and of an elastic structural matrix, bidirectional water fluxes through the epithelium play an important role in regulating VF surface mucus (≤ 0.9 mm) hydration since it consists of a superficial cover with high viscosity and thin (≈ 15 μm) underlying aqueous layer with low viscosity [46, 47, 48, 2]. Therefore, water is an important component of VF surface liquid often used
165 in (de-)hydration studies on human subjects [2, 11, 17] and on cadaver larynges [2, 17, 12]. Nebulization of either sterile (hypotonic) water or physiological saline solutions is reported to result in a non-statistically significant difference as a remedy for laryngeal desiccation treatment [11]. It is important to note that natural human saliva and mucus are non-Newtonian fluids [10, 45, 43, 44, 49]
170 whereas water is a Newtonian fluid. Nevertheless, some artificial saliva sprays contain a Newtonian fluid as well [10].

Typical liquid quantities for nebulization with artificial saliva sprays yield up to 4 mL [11]. Therefore, sprayed water volume V_L is varied in the range
175 from 0 (dry, subscript d) up to 5 mL so that the total mass of sprayed water is $m_{V_L} = \rho_L \cdot V_L$.

4. Experimental methods and operating conditions

The overall setup with airflow supply is described in Section 4.1. Stable os-
180 cillations obtained using these setup without water spraying so that $V_L = 0$ mL are characterised for all replicas in Section 4.2. The experimental procedure used to assess oscillation after water spraying is detailed in Section 4.3.

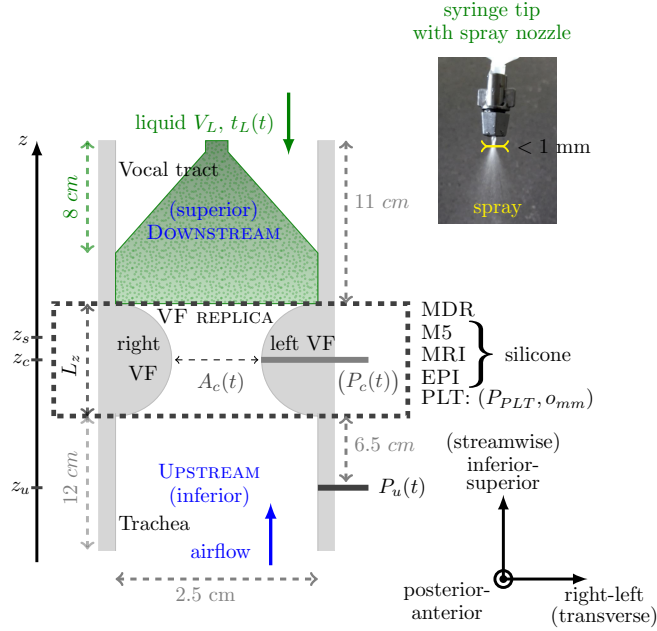


Figure 6: Schematic illustration of experimental setup with oscillating vocal folds replica in the medio-frontal plane indicating liquid injection time tag $t_L(t)$, sprayed liquid volume V_L , upstream pressure $P_u(t)$, glottal area $A_c(t)$. Assessed VF replicas: deformable (silicone and PLT) and forced motion (MDR with constriction pressure $P_c(t)$).

4.1. Overall setup with airflow supply

VF replicas, oriented as depicted in Fig. 2, are inserted in the overall ex-
 185 perimental setup illustrated in Fig. 6. A rigid (smooth duralium, neutral water
 wet wettability) uniform circular channel with diameter 2.5 cm (constant area
 490 mm²) is mounted vertically to the upstream (12 cm trachea inferior to VF)
 and downstream (11 cm vocal tract superior to VF) end of the VF replica.
 The downstream tube length is short compared to a typical vocal tract of a
 190 male adult (≈ 18 cm) in order to avoid acoustical coupling during VF oscilla-
 tion. Note that from $A_{c,max}$ values given in Table 1 (camera Mikrotron, EoSens
 Cube7, lens Tokina, AT-X100mmf/2.8 PRO D and calibration grid Edmuns Op-
 tics 58-607 [42]) follows that the area constriction ratio, *i.e.* the ratio between
 glottal area and constant area of the attached upstream and downstream tubes

195 (490 mm²), is greater than 75% at all times for all VF replicas.

Continuous steady airflow (density $\rho_G = 1.2 \text{ kg}\cdot\text{m}^{-3}$, dynamic viscosity $\mu_G = 1.8 \times 10^{-5} \text{ Pa}\cdot\text{s}$, temperature $22 \pm 2^\circ\text{C}$) is provided along the stream-wise z -direction by a valve (Norgren, 11-818-987) controlled air supply. Air is delivered by an air compressor (Atlas Copco GA5 FF-300-8, GA15 FF-8) connected to an upstream pressure reservoir (volume $\geq 0.22 \text{ m}^3$) filled with acoustic foam in order to avoid parasite acoustic resonances. A pressure transducer (Endevco 8507C-5, accuracy $\pm 5 \text{ Pa}$) is positioned in a pressure tap upstream of the VF replicas in order to measure upstream pressure $P_u(t)$. In the case of a motion driven rigid VF replica (MDR in Section 2.1) an additional pressure sensor is placed at the glottal spacing so that besides upstream pressure $P_u(t)$ constriction pressure $P_c(t)$ is measured as well, which allows to observe the glottal flow.

A stable oscillation is generated which is characterised by mean upstream pressure \bar{P}_u and oscillation frequency $f_{0,d}$. An overestimation of volume flow rate Q_{max} is obtained as

$$Q_{max} = \sqrt{\frac{2\bar{P}_u}{\rho_G}} A_{c,max} \cdot c_s \quad (2)$$

210 with glottal area upper limit $A_{c,max}$ for each VF replica listed in Table 1. The separation constant $c_s = 1.3$ defines a geometrical criterion for the time-varying position of flow detachment and jet formation z_s (Fig. 6) as the lowest stream-wise position with $z_s > z_c$ for which area $A_{z_s}(t) \geq c_s \cdot A_c(t)$ [36, 24].

An upper limit for Reynolds number Re is then given as

$$Re_{max} = \frac{\rho_G Q_{max}}{\mu_G w}, \quad (3)$$

with w as listed in Table 1. Strouhal number Sr is estimated as

$$Sr = \frac{f_{0,d} L_z}{Q_{max}} A_{c,max} \cdot c_s. \quad (4)$$

Table 3: Stable oscillation operating conditions before water spraying, $V_L = 0$ mL.

	\bar{P}_u [Pa]	$f_{0,d}$ [Hz]	Re_{max} [-]	Sr [-]
M5	1750	97	$< 20 \times 10^3$	$< 2 \times 10^{-2}$
MRI	1500	114	$< 19 \times 10^3$	$< 2 \times 10^{-2}$
EPI	500	84	$< 11 \times 10^3$	$< 3 \times 10^{-2}$
PLT	250 – 500	94 – 133	$< 9 \times 10^3$	$< 5 \times 10^{-2}$
adult	300 – 1000	80 – 180	$\sim O(10^3)$	$\sim O(10^{-2})$
MDR	1115	1 – 10	$\sim O(10^3)$	$< 0.5 \times 10^{-2}$

Furthermore, a cycle-to-cycle maximum airflow velocity at the position of jet formation is estimated from the maximum upstream pressure within each oscillation cycle $P_{u,max}$ as

$$U_{P_{u,max}} \approx \sqrt{\frac{2P_{u,max}}{\rho G}}. \quad (5)$$

Typical airflow velocities U_G through the oscillating glottal-like constriction area vary from 0 m/s up to $O(10^1)$ m/s [20, 24].

Experiments to assess the effect of water spraying on an oscillating channel using this setup and airflow supply are further described in Section 4.3. All signals are acquired (PC/DAQ, National Instruments PCI-MIO-16XE-10) with sampling frequency 10 kHz or a temporal accuracy of 0.1 ms which yields $\leq 1.5\%$ of the period for a signal with oscillation frequency ≤ 150 Hz.

4.2. Stable oscillation operating conditions for $V_L = 0$ mL

Operating conditions are set so that stable oscillations occur before water spraying (subscript d , $V_L = 0$ mL).

For the deformable VF replicas (PLT and silicone), mean upstream pressure \bar{P}_u is set just above the onset threshold pressure P_{on} , *i.e.* the minimum

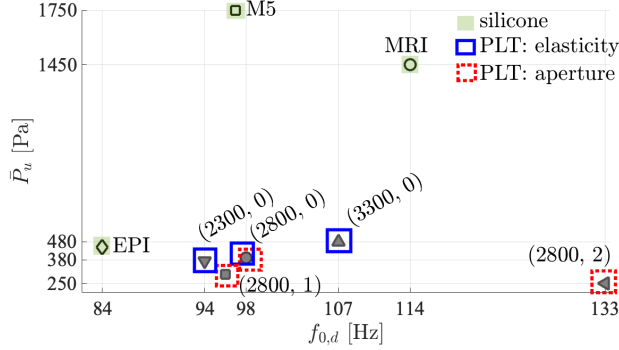


Figure 7: Deformable VF replicas in parameter space $(f_{0,d}, \bar{P}_u)$ for $V_L = 0$ mL: silicone VF replicas (M5, MRI, EPI: filled rectangles) and PLT VF replica conditions (P_{PLT}, o_{mm}) with either P_{PLT} (full line rectangles) or o_{mm} (dashed rectangles) varied from reference condition $(2800, 0)$.

upstream pressure required to sustain auto-oscillation. P_{on} depends on the replica’s elasticity so that it differs for each silicone VF replica and for each
 230 PLT condition (P_{PLT}, o_{mm}) . It follows that \bar{P}_u differs for each replica as does oscillation frequency $f_{0,d}$. For the motion-driven replica \bar{P}_u is set so that the Reynolds number approximates Reynolds numbers pertinent for human phonation and oscillation frequency f_c is imposed so that $f_{0,d} = f_c$.

Table 3 summarises operating conditions for all VF replicas, deformable
 235 (MRI, EPI, M5 and PLT) as well as motion-driven rigid (MDR), for mean upstream pressure \bar{P}_u , oscillation frequency $f_{0,d}$, Reynolds number Re_{max} (Eq. (3)) and Strouhal number Sr (Eq. (4)). As a reference, typical values observed for airflow through the glottis for a male adult speaker are also indicated in Table 3 [33, 34, 35]. For the motion driven rigid MDR VF replica $\bar{P}_u = 1115$ Pa
 240 so that Re_{max} (Eq.(3)) is indeed of the same order of magnitude as observed for an adult male speaker whereas Sr (Eq. (4)) is lower. For all deformable VF replicas Sr is within the range for human phonation whereas Re_{max} is within this range for PLT and EPI and exceeds this range for M5 and MRI. This is a consequence of the high P_{on} required to sustain auto-oscillation for M5 and
 245 MRI. An overview of operating conditions for $V_L = 0$ mL in the $(f_{0,d}, \bar{P}_u)$ pa-

parameter space for deformable VF replicas is plotted in Fig. 7.

4.3. Water spraying experiments

During water spraying experiments, at first single phase airflow (dry condition $V_L = 0$ mL) is provided in the streamwise inferior-superior direction (positive z -direction in Fig. 6) so that a stable oscillatory pattern with oscillation frequency $f_{0,d}$ is established prior to water spraying using operating conditions detailed in Section 4.2.

Then, distilled water (motivated in Section 3) is injected manually at the downstream end of the channel, along the negative z -direction, by emptying a graduated (accuracy 0.5 mL) syringe (diameter 14 mm, maximum volume 11 mL) equipped with a commercial round spray nozzle (diffusion angle $20^\circ \pm 1^\circ$, diameter $D_n = 0.7 \pm 0.1$ mm, length 10 mm) containing a known water volume $1 \leq V_L \leq 5$ mL. Water is nebulized homogeneously across the constricted area as illustrated in Fig. 6. Manual water injection is time-tagged t_L by manually operating an electrical switch at the start and end of injection. The duration of water injection Δt_L takes less than 3 s and water injection flow rate ϕ_L yields about $\phi_L = 2$ mL/s [23]. It follows that liquid bulk velocity U_L at the spray nozzle exit approximates 5.2 m/s and the syringes' driving pressure in the barrel yields 5.4 kPa. The Weber number, which compares water inertia to surface tension,

$$We = \frac{\rho_L U_L^2 D_n}{\sigma} \quad (6)$$

for water droplets with diameter D_n issued by the spray yields $We \approx O(10^2)$ with water-air surface tension $\sigma = 72$ mN/m. It follows that the injected liquid jet is expected to break up into much smaller droplets favoring initial mixing with the airflow. The droplet relaxation time

$$t_d = \frac{\rho_L D_n^2}{18\mu_G} \quad (7)$$

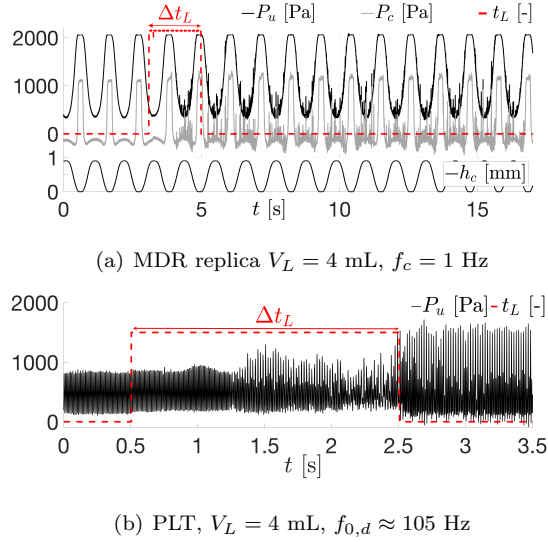


Figure 8: Time traces of measured signals near water spraying with duration Δt_L for: a) motion driven rigid MDR VF replica, b) deformable PLT VF replica for condition (3300, 0).

reduces from $t_d = 1.5$ s for $D_n = 0.7$ mm as droplets break up so that their diameter decreases. The Stokes number, characterising the behaviour of droplets suspended in the flow,

$$Stk = \frac{t_d U_G}{L_z} \quad (8)$$

varies with U_G during a single oscillation cycle leading to mixing of the droplets with the flow in the case of low Stokes numbers (smaller than 1) or surface hydration due to droplet deposition along the upstream pipe (vocal tract) and vocal folds for larger Stokes numbers (larger than 1). It follows that the flow patterns vary during a single oscillation cycle. During full closure, water can accumulate on the surface of the vocal folds replicas along the downstream end resulting in a water film. Therefore, during the opening phase the flow might overcome surface tension at the air-water interface leading to different flow patterns during the closing and opening phase. The viscous contribution to the flow reduces as A_c increases.

Measured signals near water spraying with duration Δt_L for the motion

driven rigid MDR VF replica ($P_u(t)$, $P_c(t)$, $h_c(t)$ and $t_L(t)$) and deformable
 PLT VF replica ($P_u(t)$ and $t_L(t)$) are illustrated in Fig. 8. Pressure signals
 gathered 5 s after water spraying is finished are quantitatively analysed in order
 to avoid the transitional flow associated with the injection. This way the impact
 of surface hydration due to an hydration spray usage is mimicked. It is veri-
 290 fied that no water passes through the vocal folds during oscillation. Quantified
 pressure features are outlined in Section 5.

5. Pressure analysis

5.1. Oscillation features

The influence of water spraying on the waveform shape is quantified by time
 tracking period T and associated features within each pressure P oscillation
 cycle as illustrated in Fig. 9 for upstream pressure $P = P_u$: maximum pressure
 $P_{,max}$, peak-to-peak pressure amplitude \mathcal{A} , closed portion T^t which is composed
 300 of a closing T^c and an opening T^o component. Closed portion T^t is defined as
 the duration of the period for which pressure P exceeds a threshold value. The
 threshold value is set to $P_{u,max} - 0.95\mathcal{A}$ for deformable VF replicas when up-
 stream pressure P_u is analysed ($P = P_u$) and to $P_{c,max} - 0.85\mathcal{A}$ for motion
 driven MDR VF replica when constriction pressure P_c is analysed ($P = P_c$).
 305 The part of T^t during which $P(t)$ increases corresponds to closing portion T^c
 and the remaining decreasing part corresponds to opening portion T^o so that
 $T^t = T^c + T^o$. Note that the ratio T^c/T^o informs on closing-opening asymmetry
 within each cycle. Therefore T^c/T^o allows to quantify the imprint of mean flow
 changes during these two phases, characterised by a changing closing-opening
 310 asymmetry. Such an asymmetry is likely as outlined in Section 4.1 and qualita-
 tively described for the MDR replica in [23].

To identify properties for any of the aforementioned temporal feature vectors,
 for the sake of simplicity denoted \mathcal{P} in general, its mean value $\bar{\mathcal{P}} = \frac{1}{N} \sum_{i=1}^N \mathcal{P}_i$

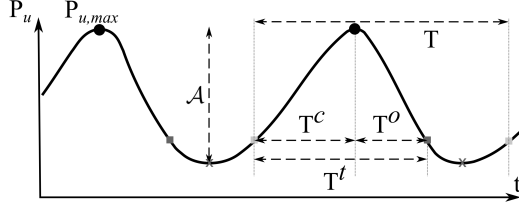


Figure 9: Illustration of waveform shape feature vectors for f_0 cycle-to-cycle analysis for pressure $P = P_u$.

and its standard deviation

$$\Delta\mathcal{P} = \sqrt{\frac{1}{N} \sum_{i=1}^N |\mathcal{P}_i - \bar{\mathcal{P}}|^2} \quad (9)$$

are gathered where $N = 50$ indicates the used number of periods. The perturbation intensity is then obtained as $\frac{\Delta\mathcal{P}}{\bar{\mathcal{P}}}$, the ratio between standard deviation $\Delta\mathcal{P}$ and mean value $\bar{\mathcal{P}}$. It is noted that when \mathcal{P} represents a velocity time series this ratio yields the turbulence intensity. Rapid cycle-to-cycle perturbation $\zeta_{\mathcal{P}}$ is given as

$$\zeta_{\mathcal{P}} = \frac{\frac{1}{N_p - 1} \sum_{i=1}^{N_p - 1} |\mathcal{P}_i - \mathcal{P}_{i+1}|}{\bar{\mathcal{P}}}. \quad (10)$$

For peak-to-peak amplitude \mathcal{A} (*i.e.* $\mathcal{P} = \mathcal{A}$) and period T (*i.e.* $\mathcal{P} = T$), $\zeta_{\mathcal{A}}$ and ζ_T yield an estimation of common voice parameters shimmer and jitter, respectively [2, 13].

Other common voice parameters are derived from a harmonic decomposition of P_u . Signal-to-noise ratio SNR (in dB) is computed as the ratio of the summed power of all signal harmonics P_{signal} based on the first harmonic frequency f_N to the summed power of the remaining noise P_{noise} :

$$SNR = 10 \log_{10} \left(\frac{P_{signal}}{P_{noise}} \right). \quad (11)$$

Total harmonic distortion rate THD (in dB) is computed from the ratio between the summed power of higher harmonics frequencies P_{harm} and the power of the

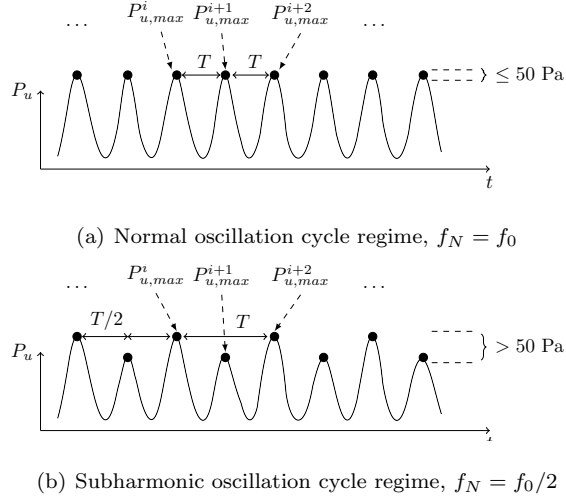


Figure 10: Illustration of f_N cycle analysis and oscillation regimes: a) normal $f_N = f_0$, b) subharmonic $f_N = f_0/2$.

first harmonic frequency P_{f_N} :

$$THD = 10 \log_{10} \left(\frac{P_{harm}}{P_{f_N}} \right). \quad (12)$$

Consequently, the signal quality is said to improve for increasing SNR and decreasing THD since it indicates less noise and less harmonic distortion, respectively.

320

5.2. Oscillation cycle-to-cycle analysis: f_0 and f_N

Classically, first harmonic frequency f_N corresponds to oscillation frequency f_0 of each normal oscillation cycle given as $1/T$ where period T corresponds to the time interval between successive waveform maxima: $P_{u,max}(i)$ and $P_{u,max}(i+1)$ as shown in Fig. 10(a).

325

An alternative subharmonic oscillation cycle regime is observed when

$$\begin{cases} |P_{u,max}^i - P_{u,max}^{i+1}| > 50 \text{ Pa}, \\ |P_{u,max}^i - P_{u,max}^{i+2}| \leq 50 \text{ Pa}, \end{cases} \quad (13)$$

as depicted in Fig. 10(b). In this case, first harmonic frequency f_N corresponds to subharmonic frequency $f_0/2$ associated with period T between maximum $P_{u,max}^i$ and $P_{u,max}^{i+2}$. The used threshold of 50 Pa corresponds to 10% up to 20% of \bar{P}_u for the PLT VF replica and $< 10\%$ of \bar{P}_u for silicone VF replicas (EPI, MRI and M5) (Table 3).

In summary, first harmonic frequency f_N of each cycle yields:

$$f_N = \begin{cases} f_0/2, & \text{if } |P_{u,max}^i - P_{u,max}^{i+1}| > 50 \text{ Pa} \\ f_0, & \text{otherwise.} \end{cases} \quad (14)$$

Consequently, besides a cycle-to-cycle analysis associated with f_0 , a cycle-to-cycle analysis associated with f_N can be performed when a subharmonic oscillation cycle regime is detected.

5.3. Period change under the added mass hypothesis

The normal cycle period T , and hence oscillation frequency $f_0 = 1/T$, characterising the auto-oscillation due to the FS interaction described by Eq. (1), is dependent on the mechanical resonance frequency, determined by its elasticity and its mass as $T \propto \sqrt{\frac{m}{k}}$ [20, 22]. It is assumed that water spraying does not affect the VF's elasticity so that k remains constant. This is a reasonable working assumption since water does not penetrate the VF replicas. On the other hand, m increases under the hypothesis that spraying water results in adding mass m_L to the vibrating mass m , *e.g.* due to accumulation of water on the downstream end of the VF replica during the closed phase as argued in Section 4.1.

The added mass is less than the mass of the injected water so that $m_L = \alpha_L m_{V_L}$ with $\alpha_L \leq 1$ holds and the same way vibrating mass m is less than total vocal fold mass m_d so that $m = \alpha_m m_d$ with $\alpha_m < 1$ holds as well. Thus, when m_L is added to vibrating mass m , normal oscillation period T deflects from its value T_d for $V_L = 0$ mL as:

$$\frac{T}{T_d} = \sqrt{1 + \frac{\alpha_L m_{V_L}}{\alpha_m m_d}} \quad \text{so that} \quad T \geq T_d. \quad (15)$$

It follows from (15) that added mass results an increase of the ratio $\frac{T}{T_d}$ so that the period increases and hence the oscillation frequency decreases.

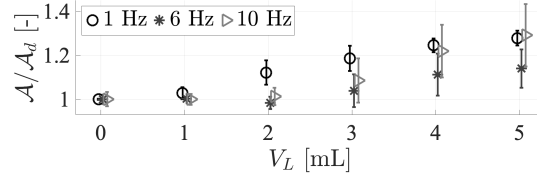
The magnitude of the increase is estimated setting $\alpha_L = 1$ and $\alpha_m = 1$.
 350 This way both m_L and m are overestimated so that their ratio provides a first estimation of the tendency expected under the added mass hypothesis. From Table 1 (for $V_L = 0$ mL) it is seen that the mean mass of all deformable VF replicas yields $\bar{m}_d = 2.02$ g and its standard deviation $\Delta m_d = 0.22$ g (11%).

355 6. Results for water spraying $V_L > 0$ mL

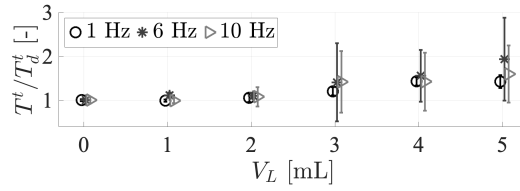
6.1. Flow through the glottal constriction

Measured upstream pressure $P_u(t)$, constriction pressure $P_c(t)$, water spraying time tag $t_L(t)$ and imposed minimum spacing $h_c(t)$ for $V_L = 4$ mL and forcing frequency $f_c = 1$ Hz near the instant of water spraying are plotted
 360 in Fig. 8(a). In [23] it was qualitatively shown that when water was sprayed ($V_L > 0$ mL) viscous two-phase mixing affects $P_c(t)$ near closure, *i.e.* during both the opening and closing phase of the oscillation, which results in increased amplitude \mathcal{A} , extended duration of pressure increase near closure T^t and different flow regimes in the opening and closing phase affecting closing-opening
 365 asymmetry T^c/T^o . Quantitative evidence of the effect of V_L on \mathcal{A} , T^t and T^c/T^o with respect to their values for single-phase airflow \mathcal{A}_d , T_d^t and $(T^c/T^o)_d$ (subscript d , $V_L = 0$ mL) is provided in Fig. 11(a), Fig. 11(b) and Fig. 11(c).

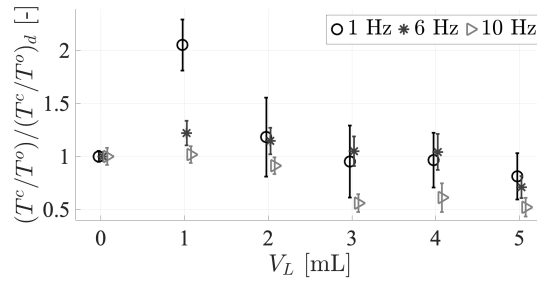
Both mean (symbols) and standard deviation (vertical error bars) of \mathcal{A} and T^t augments with V_L up to at least 10%. The standard deviation of T^c/T^o increases with V_L as well whereas mean T^c/T^o first increases $V_L \in \{1, 2\}$ mL and
 370 then decreases for $V_L > 2$ mL up to $> 15\%$ so that opening-closing asymmetry of the glottal flow qualitatively described and modelled in [23] is quantitatively confirmed. The increased perturbation points to an increased complexity and fluctuation of P_c whose origin needs yet to be fully determined, although droplet



(a) $\mathcal{A}/\mathcal{A}_d$

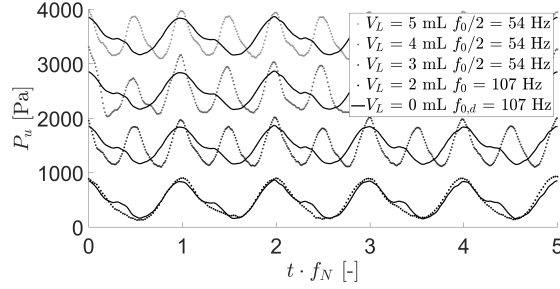


(b) T^t/T_d^t

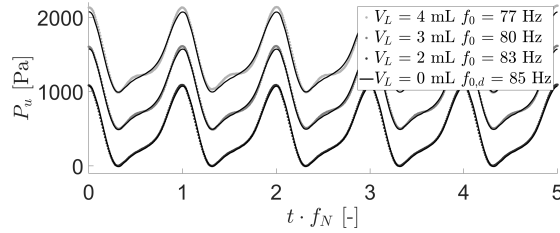


(c) $(T^c/T^o)/(T^c/T^o)_d$

Figure 11: Motion driven rigid MDR VF replica: a) $\mathcal{A}(V_L)/\mathcal{A}_d$ from $P_c(t)$, b) $T^t(V_L)/T_d^t$ from $P_c(t)$ and c) $(T^c/T^o)/(T^c/T^o)_d$ from $P_c(t)$. Subscript d indicates $V_L = 0$ mL. Mean (symbols) and standard deviation (vertical bars) are plotted in a), b) and c). For clarity data for $\{1, 10\}$ Hz are shifted around V_L .



(a) PLT, $P_u(t \cdot f_N)$ for $V_L \leq 5$ mL



(b) EPI, $P_u(t \cdot f_N)$ for $V_L \leq 5$ mL

Figure 12: a) $P_u(t \cdot f_N)$ for PLT condition (3300,0) and $V_L \leq 5$, b) $P_u(t \cdot f_N)$ for EPI and $V_L \leq 5$. Time is normalised with f_N yielding $f_{0(d)}$ or $f_0/2$. Curves for $V_L \geq 3$ mL are upshifted, $V_L \geq 2$ mL (dotted lines) and $V_L = 0$ mL (full line).

375 induced turbulence is suggested in [23].

6.2. FSI during auto-oscillation

6.2.1. Measured upstream pressure

A typical measurement of upstream pressure $P_u(t)$ and water spraying tag
 380 $t_L(t)$ near the instant of water spraying for a deformable VF replica (PLT) is
 plotted in Fig. 8(b). The influence of water spraying on time traces of upstream
 pressure signal P_u taken 5 s after water spraying is shown in more detail in
 Fig. 12(a) (pressurized tube VF replica PLT for (3300,0): $P_{PLT} = 3300$ Pa,
 screw opening 0 mm) and in Fig. 12(b) (silicone VF replica: EPI) where P_u
 385 before ($V_L = 0$ mL, full line) and after ($V_L > 0$ mL, dotted line) water spraying
 is plotted. Note that for clarity pressure signals P_u for $V_L \geq 3$ mL are upshifted.

The first harmonic frequency f_N (Section 5.2) is used for time normalization and varies with V_L as indicated in the legends. Note that depending on V_L a sub-harmonic oscillation cycle regime becomes apparent for the PLT replica. The amplitude of P_u is affected although the influence is small for EPI (Fig. 12(b)) and more prominent for PLT (Fig. 12(a)).

6.2.2. Cycle-to-cycle analysis associated with f_0

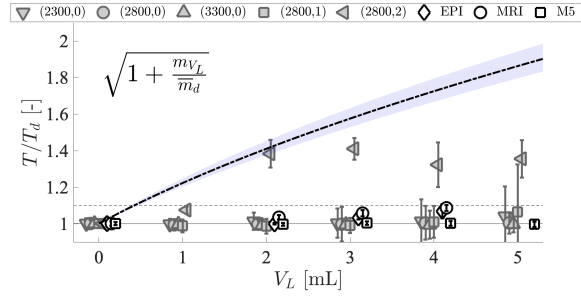
The normal oscillation cycle regime, determined by oscillation frequency f_0 , is analysed. Upstream pressure features outlined in Section 5.1 are determined as a function of V_L in order to assess the impact of water spraying on cycle-to-cycle characteristics associated with $f_{0,d}$, *i.e.* for $V_L = 0$ mL. For clarity, features for different deformable replicas are plotted in an interval centered around each V_L value.

Period T :

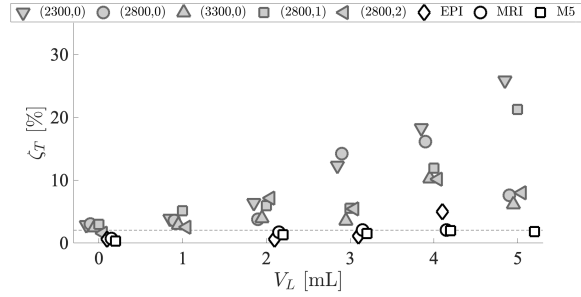
. Mean and standard deviation of period T associated with oscillation frequency f_0 are presented in Fig. 13 as a function of water volume V_L . Plotted values are normalised with mean period T_d for $V_L = 0$ mL.

Mean values (Fig. 13(a)) for EPI and MRI show a slight (less than 10%) increase with V_L . For M5 and PLT (P_{PLT}, o_{mm})-conditions mean $T/T_d \approx 1$ so that oscillation frequency f_0 is mostly unaffected except for condition (2800, 2), with the largest assessed initial opening $o_{mm} = 2$ mm, for which T increases with $\approx 35\%$ when $V_L \geq 2$ mL. Observed T/T_d do not agree with the gradual and significant (up to 100%) increase predicted using Eq. (15) with $\alpha_m = 1$ and $\alpha_L = 1$. It follows that the added mass hypothesis (Section 5.3) is rejected as it can not explain T/T_d so that observed changes to the oscillation period (and hence frequency) are not attributed to changes of the vibrating mass m .

The standard deviation of T (error bars in Fig. 13(a)) and cycle-to-cycle perturbation ζ_T (Fig. 13(b)) increase with V_L . The increase is limited ($< 10\%$)



(a) T/T_d : 1 (full line), 1.1 (dashed line)



(b) ζ_T : 2% (dashed line)

Figure 13: Mean (symbols) and standard deviation (vertical bars) as a function of sprayed water volume V_L : a) normalized period T/T_d and tendency resulting from added mass hypothesis (dash-dotted line) with $m_d = \bar{m}_d$ (Eq. (15) for $\alpha_L = 1$ and $\alpha_m = 1$) and $m_d = \bar{m}_d \pm \Delta m_d$ (shaded region), b) period perturbation ζ_T . Values from f_0 cycle-to-cycle analysis.

for silicone VF replicas EPI, MRI and M5 regardless of V_L and is more pronounced (between 10% and 30%) for $V_L \geq 2$ mL in the case of PLT VF replicas. Overall, ζ_T increases as the PLT VF replica condition ($P_{PLT, o_{mm}}$) becomes more elastic, *i.e.* decreasing $P_{PLT} \in \{2300, 2800, 3300\}$ Pa and $o_{mm} = 0$ mm.
420 No clear tendency is observed with respect to the initial aperture condition o_{mm} .

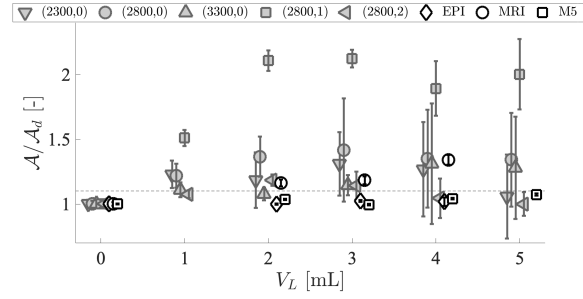
Amplitude \mathcal{A} and turbulence intensity:

. Mean and standard deviation of auto-oscillation amplitude \mathcal{A} as a function of water volume V_L are shown in Fig. 14(a). Amplitude values are normalised with respect to \mathcal{A}_d , *i.e.* mean amplitude for $V_L = 0$ mL. For the PLT replica conditions with limited period increase (T/T_d increase $< 10\%$), a large amplitude increase (between 10% and 120%) and large standard deviations (up to 40%) are observed whereas they are less than 15% for the remaining PLT condition (2800, 2). For all silicone VF replicas standard deviations of \mathcal{A} are negligible and the mean value increase is limited to $< 10\%$ for MRI and M5 and more pronounced up to 35% for EPI.
430

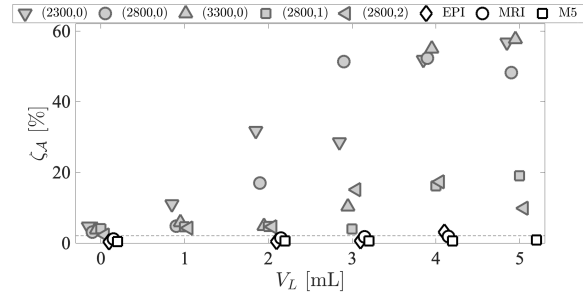
Cycle-to-cycle perturbation ζ_A (Fig. 14(b)) remains less than 2% for all silicone VF replicas and increases up to 60% for PLT replica conditions. The same tendency is observed when considering turbulence intensity $\Delta U_{P_{u, max}} / \bar{U}_{P_{u, max}}$ where $U_{P_{u, max}}$ is estimated for each cycle using Eq. (5). The turbulence intensity yields less than 1% for all silicone VF replicas and increases with V_L up to 15% for PLT replica conditions. Overall perturbation measures ζ_A and $\Delta U_{P_{u, max}} / \bar{U}_{P_{u, max}}$ increases as the PLT VF replica condition ($P_{PLT, o_{mm}}$) becomes more elastic (decreasing $P_{PLT} \in \{3300, 2800, 2300\}$ Pa and $o_{mm} = 0$ mm) and as the initial aperture decreases (decreasing $o_{mm} \in \{2, 1, 0\}$ mm and $P_{PLT} = 2800$ Pa).
440

Closing and opening $T^t = T^c + T^o$:

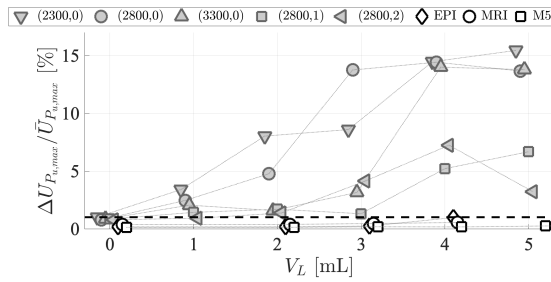
. Mean and standard deviation of T^t/T , expressing the ratio between the duration of the pressure peak associated with closing and opening and period T , is
445



(a) $\mathcal{A}/\mathcal{A}_d$: 1.1 (dashed line)

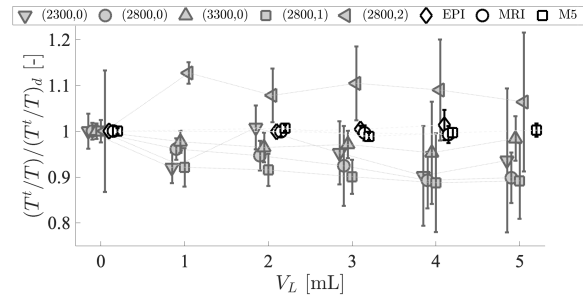


(b) $\zeta_{\mathcal{A}}$: 2% (dashed line)

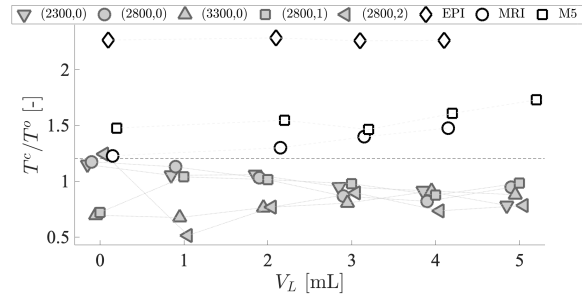


(c) $\Delta U_{P_{u,max}}/\bar{U}_{P_{u,max}}$: 1% (dashed line)

Figure 14: Mean (symbols) and standard deviation (vertical bars) as a function of sprayed water volume V_L : a) normalized amplitude $\mathcal{A}/\mathcal{A}_d$, b) amplitude perturbation $\zeta_{\mathcal{A}}$, c) turbulence intensity $\Delta U_{P_{u,max}}/\bar{U}_{P_{u,max}}$.



(a) $(T^t/T)/(T^t/T)_d$: 1.0 (dashed line)



(b) T^c/T^o : 1.2 (dashed line)

Figure 15: Mean (symbols) and standard deviation (vertical bars) as a function of sprayed water volume V_L : a) normalised closed portion $(T^t/T)/(T^t/T)_d$, b) closing-opening asymmetry $(T^c/T^o)/(T^c/T^o)_d$.

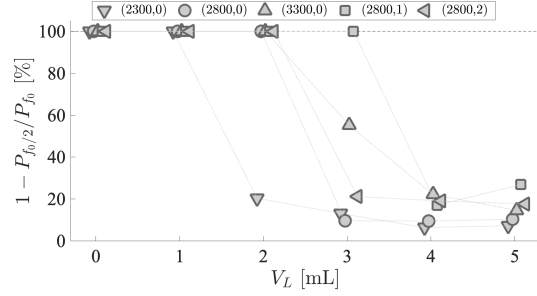
plotted in Fig. 15. Shown values are normalised by $(T^t/T)_d$ for $V_L = 0$ mL. For silicone replicas T^t/T is unaffected by V_L since $T^t/T \approx 1$ and standard deviations are less than 3%. For PLT conditions it is seen that ratio T^t/T decreases compared to its value for $V_L = 0$ mL while the standard deviation increases to 20%. A different tendency is again observed for PLT condition (2800, 2) for which the ratio yields $\approx 10\%$ for $V_L > 0$ mL.

Closing-opening asymmetry T^c/T^o associated with T^t is plotted in Fig. 6.2.2. Different tendencies are observed for the silicone VF replicas and PLT replica conditions. For silicone VF replicas $T^c \geq 1.2T^o$ and its value either remains (EPI for which $T^c/T^o \approx 2.3$) or increases with V_L (MRI and M5) so that the closing phase dominates the opening phase regardless of V_L . The opposite tendency is found for the PLT VF replica conditions since the range for $V_L = 0$ mL ($T^c/T^o \in [0.7 \ 1.2]$) reduces with V_L to $T^c/T^o \approx 0.8 \pm 0.1$. Consequently, for PLT replica conditions the opening phase is more prominent than the closing phase. Note that these tendencies can be qualitatively observed from upstream pressure time signals plotted in Fig. 12(a) for PLT condition (3300, 0) and in Fig. 12(b) for the silicone EPI VF replica.

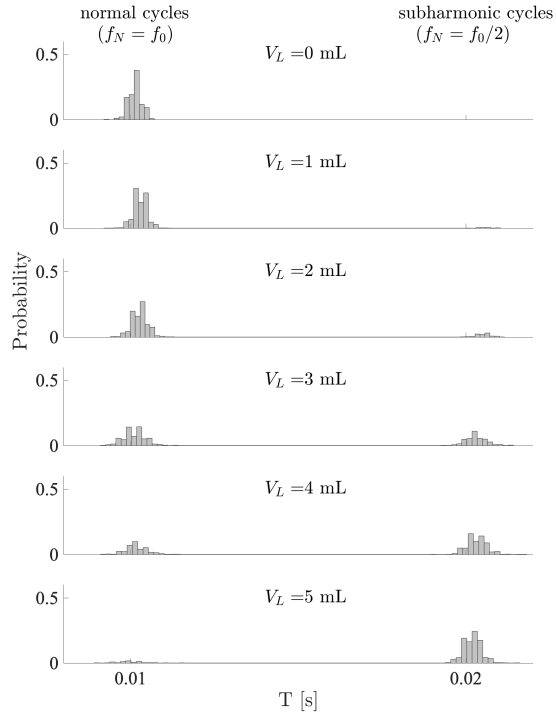
6.2.3. Cycle-to-cycle analysis associated with f_N

Evidence of subharmonic oscillation regime:

. The first harmonic frequency f_N is determined as outlined in Section 5.2. For silicone vocal folds replicas (EPI, MRI and M5) the first harmonic frequency (Eq. (14)) equals the harmonic frequency ($f_N = f_0$) for all V_L (see *e.g.* Fig. 12(b) for the EPI VF replica), so that the power ratio between subharmonic frequency $f_0/2$ and harmonic frequency f_0 yields zero, *i.e.* $P_{f_0/2}/P_{f_0} = 0$, and hence $1 - P_{f_0/2}/P_{f_0} = 1$ (or 100%). For PLT VF conditions on the other hand, first harmonic frequency f_N shifts from harmonic frequency f_0 to subharmonic frequency $f_0/2$ as V_L increases, which is illustrated for (3300, 0) in Fig. 12(a). Values of $1 - P_{f_0/2}/P_{f_0}$ for all PLT replica conditions as a function of V_L are



(a) $1 - P_{f_0/2}/P_{f_0}$: 100% (dashed line)



(b) T probability for (2800, 0)

Figure 16: Evidence for subharmonic frequency $f_0/2$ as a function of V_L : a) subharmonic-to-harmonic power ratio $1 - P_{f_0/2}/P_{f_0}$, b) probability of T from f_N cycle-to-cycle analysis for PLT condition (2800, 0).

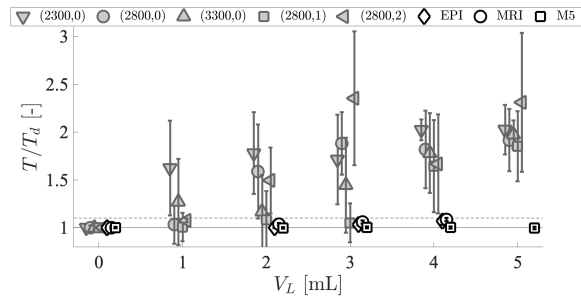
plotted in Fig. 16(a). The ratio decreases from 100% for $V_L = 0$ mL, when no subharmonic is present and $f_N = f_0$ holds, to less than 30% for $V_L \geq 4$ mL. The rate at which first harmonic f_N shifts from harmonic frequency f_0 to subharmonic $f_0/2$ as V_L increases depends on the assessed PLT replica condition
480 ($P_{PLT, omm}$). Note that since $1 - P_{f_0/2}/P_{f_0} > 0$, it implies that in all cases harmonic frequency f_0 has more energy than subharmonic frequency $f_0/2$.

Period T:

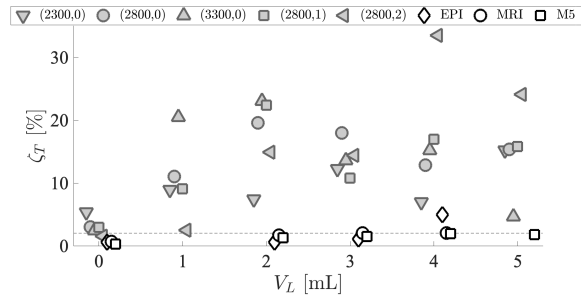
. Fig. 16(b) shows the probability distribution of T as a function of V_L for
485 PLT condition (2800, 0). Period T is detected as outlined in Section 5.2. Two distribution peaks are observed. The first peak associated with $f_N = f_0$ for $T \approx 0.01$ s is dominant for $V_L < 3$ mL and the second peak associated with $f_N = f_0/2$ for $T \approx 0.02$ s is dominant for $V_L > 3$ mL. For $V_L = 3$ mL the maximum probability of both peaks is similar. Furthermore, it is noted that
490 both peaks have similar width indicating that the variation around the mean peak value is similar as well.

A cycle-to-cycle analysis for T/T_d associated with first harmonic frequency f_N is plotted in Fig. 17(a) and associated cycle-to-cycle perturbation ζ_T is shown
495 in Fig. 17(b). For silicone VF replicas (M5, MRI, EPI) $f_N = f_0$ so that plotted values are similar to those in Fig. 13(a). For PLT replica conditions first harmonic frequency f_N equals either harmonic frequency f_0 or subharmonic frequency $f_0/2$ as illustrated in Fig. 16(b) for PLT condition (2800, 0). Consequently, mean T/T_d -values gradually increase with V_L towards $T/T_d \approx 2$
500 expressing the growing weight of subharmonic frequency $f_0/2$ on mean values of T/T_d as is illustrated in Fig. 16.

Overall, for PLT replica conditions standard deviations of T/T_d (Fig. 17(a)) and cycle-to-cycle perturbations ζ_T (Fig. 17(b)) for $V_L \geq 1$ mL associated with a f_N cycle-to-cycle analysis are increased compared to those obtained from a f_0
505 cycle-to-cycle analysis (Fig. 13). This increase is among others due to the first



(a) T/T_d : 1 (full line), 1.1 (dashed line)



(b) ζ_T : 2% (dashed line)

Figure 17: Mean (symbols) and standard deviation (vertical bars) as a function of sprayed water volume V_L : a) normalized period T/T_d , b) period perturbation ζ_T . Values from f_N cycle-to-cycle analysis.

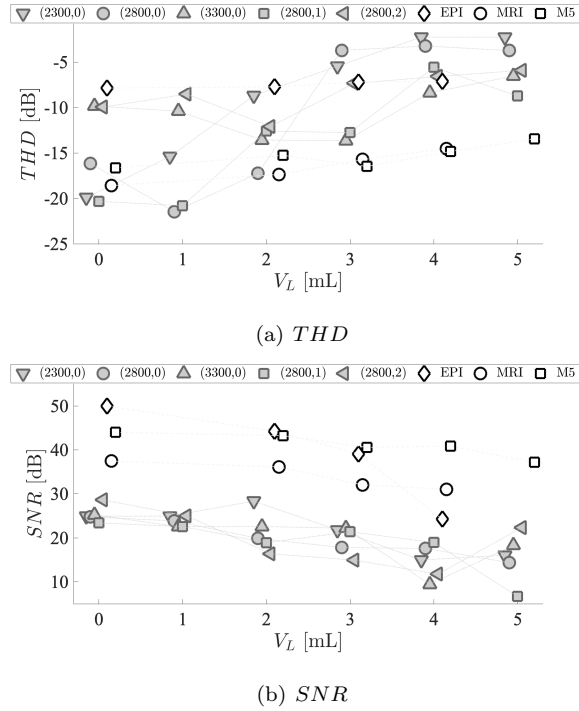


Figure 18: Overall spectral features: a) total harmonic distortion rate THD , b) signal-to-noise ratio SNR .

harmonic frequency f_N shifting between f_0 and $f_0/2$ (see Fig. 16(b)).

Overall spectral features THD and SNR:

. Changes to the harmonic contents with respect to the lowest first harmonic
510 frequency f_N of upstream pressure P_u with V_L are further quantified by the to-
total harmonic distortion rate THD (Eq. (12)) depicted in Fig. 18(a). For silicone
replicas (EPI, MRI and M5) the increase is limited since it is most notable for
MRI (≈ 4 dB increase). For PLT replica conditions an overall increase (> 4 dB)
with V_L is observed. Nevertheless, the increase is not monotonous since for
515 $0 < V_L \leq 3$ mL the subharmonic frequency $f_0/2$ gradually imprints on the
harmonic composition with a rate depending on initial conditions (P_{PLT}, o_{mm}).
Overall, it is seen that THD increases with V_L for all VF replicas so that for

all VF replicas harmonics are generated with V_L .

520 From Fig. 18(b) is seen that the signal-to-noise ratio SNR (Eq. (11)) decreases as V_L increases for all replicas. The overall decrease yields ≥ 10 dB except for MRI and M5 for which the decrease is limited to ≤ 5 dB. It is noted that for all V_L , SNR -values for silicone VF replicas are greater than the ones for PLT VF replica conditions.

525

7. Discussion

For all deformable VF replicas, increasing V_L in the range $V_L \leq 5$ mL affects the mean waveform shape of the upstream pressure during normal oscillation regime: increased oscillation cycle period T , increased amplitude \mathcal{A} and altered closing and opening portions $T^{c,o,t}$ so that closing-opening asymmetry is affected. 530 The perturbation of this mean waveform shape increases with V_L as well: increased total harmonic distortion rate THD , decreased signal-to-noise ratio SNR and increase of both fast ($\zeta_{T,\mathcal{A}}$) and overall (standard deviations) fluctuations of waveform shape features. Therefore, water spraying affects the normal auto-oscillation regime resulting in changes to the mean waveform shape 535 – increased oscillation period and amplitude, changes to opening and closing portions – and increased perturbation of this mean waveform.

A preliminary qualitative description of the effect of water spraying on the glottal flow through the motion driven MDR replica [23] was confirmed quantitatively in this work for waveform amplitude \mathcal{A} and closing and opening portions $T^{t,c,o}$. Found tendencies on the motion driven VF replica compare well with general normal oscillation cycle tendencies described for deformable VF replicas: changes to mean values (amplitude increase and altered opening and closing 545 portions $T^{t,c,o}$) and increased perturbation. Therefore, current findings support that flow changes following two-phase water-air mixing observed for the motion

driven MDR replica do also occur in the case of the deformable VF replicas. Flow changes following two-phase water-air mixing will alter pressure forces (F_A right-hand side of Eq. 1) on the enveloping VF structure and hence contribute
550 to observed waveform shape changes. Current data disprove that the vibrating mass increases with V_L . Therefore, m in the left-hand side of Eq. (1) can be assumed independent of V_L and mass changes can not explain observed changes to normal oscillation period T or frequency f_0 . Hence, it is of interest for further research to account for flow mixing when aiming to model the FS interaction
555 after surface hydration with a spray and to assess how far such a flow model can explain observed general tendencies of the impact of V_L on the waveform shape associated with $V_L = 0$ mL.

A part from mass m , initial conditions related to the elasticity and initial
560 glottal aperture (r , k , and A_0 left-hand side of Eq. (1)) as well as imposed mean upstream air pressure \bar{P}_u (F_A right-hand side of Eq. (1)) determine the FS interaction. Different deformable VF replicas were used resulting in a considerable variation of these initial conditions. Quantified waveform shape features showed the strong impact of initial conditions on the degree to which water spraying af-
565 fects the mean waveform shape and its perturbation. In general, mean and even more so perturbation features are less affected by water spraying for silicone VF replicas (EPI, MRI and M5) than for PLT VF replica conditions. Large differences are observed between different PLT conditions as well. It is noted that the silicone M5 VF replica is only marginally affected by V_L . In future, a
570 more systematic study is needed to quantify the effect of water spraying while varying initial conditions.

A subharmonic oscillation regime is generated by water spraying for $V_L \geq 2$ mL in the case of PLT VF replica conditions and no subharmonic oscillation
575 regime is observed for silicone VF replicas. The generation of a sub-harmonic frequency point to non-linearities introduced following water spraying for the PLT VF replica. These non-linearities are potentially due to perturbations in-

roduced by turbulence, estimated to increase with V_L between 1% and 15%
for the PLT VF replica whereas it remains less than 1% for silicone VF replicas.
580 Further evidence is needed to sustain this statement.

General tendencies observed for the normal oscillation regime agree with
findings reported in literature concerning the effect of surface hydration on hu-
man voice features [12, 17, 2] and on excised larynges [13]: decrease of oscillation
585 frequency f_0 , changes to closing-opening asymmetry and to perturbation mea-
sures $\zeta_{A,T}$ as well as signal-to-noise ratio SNR and total harmonic distortion
rate THD . Note that the shown influence of initial conditions observed for
deformable VF replicas might partly explain the variety of tendencies observed
on human speakers.

590

8. Conclusion

The effect of water spraying on a stable oscillation is quantified for increasing
water volume. For deformable replicas, the mean upstream pressure waveform
shape exhibits decreased oscillation frequency, increased amplitude, changing
595 closing-opening asymmetry and increased perturbation. The degree to which
these changes occur depends on initial conditions. These tendencies are con-
sistent with quantified glottal pressure waveform shape changes observed for a
motion driven rigid VF replica subjected to water spraying. This suggests that,
as observed for the motion driven rigid replica, changing glottal flow behaviour
600 due to air-water mixing underlies observed tendencies for the deformable VF
replicas. Modeling studies are needed in order to assess to which extent mixing
flow can explain current findings. In addition, further experimental research
is needed in order to systematically consider the effect of initial replica condi-
tions and their surface wettability, the influence of the used nozzle, quantify the
605 droplet distribution during oscillation and further investigate physical mecha-
nisms underlying the observed effects of water spraying on oscillation features.

Acknowledgements

This work was partly supported by ArtSpeech project (ANR-15-CE23-0024).
610 Authors are grateful to Dr. Isao T. Tokuda (Ritsumeikan Univ., Japan) for
helping us building silicone VF replicas.

References

- [1] J. Gartner-Schmidt, Voice Therapy for the treatment of voice disorders, 4th Edition, Vol. 1 of Head & Neck Surgery - Otolaryngology, Lippincott
615 Williams & Wilkins, Philadelphia, USA, 2006.
- [2] C. Leydon, M. Sivasankar, D. Falciglia, C. Atkins, K. Fisher, Vocal fold surface hydration: a review, *J Voice* 23 (6) (2009) 658–665.
- [3] K. Verdolini, I. Titze, A. Fernell, Dependence of phonatory effort on hydration level, *J. Speech Hear Res* 37 (1994) 1001–1007.
- 620 [4] M. Sivasankar, T. Carroll, A. Kosinski, C. Rosen, Quantifying the effects of altering ambient humidity on ionic composition of vocal fold surface fluid, *Laryngoscope* 123 (2013) 1275–1278.
- [5] N. Solomon, M. DiMatta, Effects of a vocally fatigue task and systemic hydration on phonation pressure threshold, *J Voice* 14 (2000) 341–362.
- 625 [6] E. Santana, M. Masson, T. Araujo, The effect of surface hydration on teacher’s voice quality: an intervention study, *J Voice* 31 (2017) 5–11.
- [7] E. Erickson-Levendoski, M. Sivasankar, Investigating the effects of caffeine on phonation, *J Voice* 25 (2011) 215–219.
- 630 [8] M. Sivasankar, E. Erickson-Levendoski, Influence of obligatory mouth breathing during realistic activities, on voice measures, *J Voice* 26 (2012) 9–13.

- [9] K. Fisher, J. Ligon, J. Sobecks, D. Roxe, Phonatory effects of body fluid removal, *J Speech Lang Hear Res* 44 (2001) 354–367.
- [10] A. Preetha, R. Banerjee, Comparison of artificial saliva substitutes, *Trends Biomater. Artif. Organs* 18 (2005) 178–186.
- [11] K. Tanner, N. Roy, R. Merrill, K. Kendall, K. Miller, D. Clegg, A. Heller, D. Houtz, M. Elstad, Comparing nebulized water versus saline after laryngeal desiccation challenge in Sjögren’s Syndrome, *Laryngoscope* 123 (2013) 2787–2792.
- [12] M. Ayache, S. Ouaknine, P. Dejonkere, P. Prindere, A. Giovanni, Experimental study of the effects of surface mucus viscosity on the glottic cycle, *J Voice* 18 (2004) 107–115.
- [13] M. Dollinger, F. Grohn, D. Berry, U. Eysholdt, G. Luegmaira, Preliminary results on the influence of engineered artificial mucus layer on phonation, *J. Speech, Language, Hearing Res.* 57 (2014) 637–647.
- [14] J. Jiang, J. Ng, D. Hanson, The effects fo rehydration on phonation in excised canine larynges, *J Voice* 83 (1999) 1536–1552.
- [15] N. Roy, K. Tanner, S. Gray, M. Blomgren, K. Fisher, An evaluation of the effects of three laryngeal lubricants on phonation threshold pressure (PTP), *J Voice* 17 (2003) 331–342.
- [16] C. Leydon, M. Wroblewski, N. Eichorn, M. Sivasankar, A meta-analysis of outcomes of hydration intervention on phonation threshold pressure, *J Voice* 24 (2010) 637–643.
- [17] M. Alves, E. Kruger, B. Pillay, K. van Lierde, J. van der Linde, The effect of hydration on voice quality in adults: a systematic review, *J Voice* 33 (2019) 13–28.
- [18] C. Rosen, C. Simpson, *Operative techniques in laryngology*, Springer-Verlag, 2008.

- [19] I. Titze, The physics of small-amplitude oscillation of the vocal folds, J
660 Acous Soc Am 83 (1988) 1536–1552.
- [20] N. Rutu, X. Pelorson, A. Van Hirtum, I. Lopez, A. Hirschberg, An in-vitro
setup to test the relevance and the accuracy of low-order models of the
vocal folds, J Acous Soc Am 121 (2007) 479–490.
- [21] F. Avanzini, Simulation of vocal fold oscillation with a pseudo-one-mass
665 physical model, Speech Comm. 50 (2008) 95–108.
- [22] P. Luizard, X. Pelorson, Threshold of oscillation of a vocal folds replica
with unilateral surface growths, J Acous Soc Am 141 (2017) 3050–3058.
- [23] A. Van Hirtum, A. Bouvet, X. Pelorson, Pressure drop for adiabatic air-
water flow through a time-varying constriction, Phys Fluids 30 (2018)
670 101901.
- [24] J. Cisonni, A. Van Hirtum, X. Pelorson, J. Willems, Theoretical simulation
and experimental validation of inverse quasi one-dimensional steady and
unsteady glottal flow models, J Acous Soc Am 124 (2008) 535–545.
- [25] B. Pickup, S. Thomson, Flow-induced vibratory response of idealized versus
675 magnetic resonance imaging-based synthetic vocal fold models, J Acous Soc
Am 128 (2010) 124–129.
- [26] P. Murray, S. Thomson, Vibratory responses of synthetic, self-oscillating
vocal fold models, J Acous Soc Am 132 (2012) 3428–3438.
- [27] M. Triep, C. Brucker, W. Schroder, High-speed PIV measurements of the
680 flow downstream of a dynamic mechanical model of the human vocal folds,
Exp Fluids 39 (2005) 232–245.
- [28] J. Neubauer, Z. Zhang, R. Miraghaie, D. Berry, Coherent structures of the
near field flow in a self-oscillating physical model of the vocal folds, J Acous
Soc Am 121 (2007) 1102–1118.

- 685 [29] A. Lodermeier, S. Becker, M. Dollinger, S. Kniesburges, Phase-locked flow field analysis in a synthetic human larynx model, *Exp Fluids* 56 (2015) 1–13.
- [30] I. Tokuda, R. Shimamura, Effect of level difference between left and right vocal folds on phonation: Physical experiment and theoretical study, *J Acous Soc Am* 142 (2017) 482–492.
690
- [31] A. Lodermeier, M. Tautz, S. Becker, M. Dollinger, V. Birk, S. Kniesburges, Aeroacoustic analysis of the human phonation process based on a hybrid acoustic PIV approach, *Exp Fluids* 59 (2018) 1–15.
- [32] I. Titze, S. Schmidt, M. Titze, Phonation threshold pressure in a physical model of the vocal fold mucosa, *J Acous Soc Am* 97 (1995) 3080–3084.
695
- [33] M. Hirano, S. Kurita, T. Nakashima, *Vocal fold physiology: contemporary research and clinical issues*, College-Hill Press, 1983, Ch. Growth, development and aging of human vocal folds, pp. 22–43.
- [34] R. Plant, G. Freed, R. Plant, Direct measurement of onset and offset phonation threshold pressure in normal subjects, *J Acous Soc Am* 116 (2004) 3640–3646.
700
- [35] M. Mobashir, A. Mohamed, A. Quriba, A. Anany, E. Hassan, Linear measurements of vocal folds and laryngeal dimensions in freshly excised human larynges, *J Voice* 32 (2018) 525–529.
- 705 [36] C. Vilain, X. Pelorson, C. Fraysse, M. Deverge, A. Hirschberg, J. Willems, Experimental validation of a quasi-steady theory for the flow through the glottis, *J. Sound and Vib* 276 (2004) 475–490.
- [37] F. Alipour, I. Titze, Elastic models of vocal fold tissues, *J Acous Soc Am* 90 (1991) 1326–1331.
- 710 [38] Y. Min, I. Titze, F. Alipour, Stress-strain response of the human vocal ligament, *Ann Otol Rhinol Laryngol* 104 (1995) 563–569.

- [39] R. Chan, M. Fu, L. Young, N. Tirunagari, Relative contributions of collagen and elastin to elasticity of the vocal fold under tension, *Ann Biomed. Eng.* 35 (2007) 1471–1483.
- 715 [40] S. Smith, S. Thomson, Effect of inferior surface angle on the self-oscillation of a computational vocal fold model, *J Acous Soc Am* 131 (2012) 4062–4075.
- [41] R. Scherer, D. Shinwari, K. De Witt, C. Zhang, B. Kucinski, A. Afjeh, Intraglottal pressure profiles for a symmetric and oblique glottis with a divergence angle of 10 degrees, *J Acous Soc Am* 109 (2001) 1616–1630.
- 720 [42] A. Van Hirtum, X. Pelorson, High-speed imaging to study an auto-oscillating vocal fold replica for different initial conditions, *Int. J. Applied Mech.* 9 (1-18).
- [43] S. Hwang, M. Litt, W. Forsman, Rheological properties of mucus, *Rheologica Acta* 8 (1969) 438–448.
- 725 [44] W. Schwarz, The rheology of saliva, *J Dent Res* 66 (1987) 660–664.
- [45] S. Lai, Y. Wang, D. Wirtz, J. Hanes, Micro- and macrorheology of mucus, *Adv. Drug Deliv. Rev.* 61 (2009) 86–100.
- [46] J. Phillips, L. Wong, D. Yeates, Bidirectional transepithelial water transport: measurement and governing mechanisms, *Biophys J* 76 (1999) 869–877.
- 730 [47] K. Fisher, A. Telser, J. Phillips, D. Yeates, Regulation of vocal fold transepithelial water fluxes, *J Appl Physiol* 91 (2001) 1401–1411.
- [48] M. Sivasankar, K. Fisher, Vocal fold epithelial response to luminal osmotic perturbation, *J. Speech Hear Res* 50 (2007) 886–898.
- 735 [49] A. Miri, Mechanical characterization of vocal fold tissue: a review study, *J Voice* 28 (6) (2014) 657–666.