



HAL
open science

N-acetylglucosamine deacetylases modulate the anchoring of the gamma-glutamyl capsule to the cell wall of *Bacillus anthracis*.

Thomas Candela, Stavroula Balomenou, Willy Aucher, Vassilis Bouriotis, Jean-Pierre Simorre, Agnes Fouet, Ivo G Boneca

► To cite this version:

Thomas Candela, Stavroula Balomenou, Willy Aucher, Vassilis Bouriotis, Jean-Pierre Simorre, et al. N-acetylglucosamine deacetylases modulate the anchoring of the gamma-glutamyl capsule to the cell wall of *Bacillus anthracis*. Microbial Drug Resistance, 2014, 20 (3), pp.222-30. 10.1089/mdr.2014.0063 . hal-01119761

HAL Id: hal-01119761

<https://hal.univ-grenoble-alpes.fr/hal-01119761v1>

Submitted on 18 Jul 2024

HAL is a multi-disciplinary open access archive for the deposit and dissemination of scientific research documents, whether they are published or not. The documents may come from teaching and research institutions in France or abroad, or from public or private research centers.

L'archive ouverte pluridisciplinaire **HAL**, est destinée au dépôt et à la diffusion de documents scientifiques de niveau recherche, publiés ou non, émanant des établissements d'enseignement et de recherche français ou étrangers, des laboratoires publics ou privés.

N-Acetylglucosamine Deacetylases Modulate the Anchoring of the Gamma-Glutamyl Capsule to the Cell Wall of *Bacillus anthracis*

Thomas Candela,^{1,2,*} Stavroula Balomenou,³⁻⁶ Willy Aucher,^{1,2,†} Vassilis Bouriotis,^{5,6} Jean-Pierre Simore,⁷ Agnes Fouet,^{1,2,‡,§} and Ivo G. Boneca^{3,4,§}

Bacillus anthracis has a complex cell wall structure composed of a peptidoglycan (PG) layer to which major structures are anchored such as a neutral polysaccharide, an S-layer, and a poly- γ -D-glutamate (PDGA) capsule. Many of these structures have central roles in the biology of *B. anthracis*, particularly, in virulence. However, little attention has been devoted to structurally study the PG and how it is modified in the presence of these secondary cell wall components. We present here the fine structure of the PG of the encapsulated RPG1 strain harboring both pXO1 and pXO2 virulence plasmids. We show that *B. anthracis* has a high degree of cross-linking and its GlcNAc residues are highly modified by *N*-deacetylation. The PG composition is not dependent on the presence of either LPXTG proteins or the capsule. Using NMR analysis of the PG-PDGA complex, we provide evidence for the anchoring of the PDGA to the glucosamine residues. We show that anchoring of the PDGA capsule is impaired in two PG *N*-deacetylase mutants, Ba1961 and Ba3679. Thus, these multiple *N*-deacetylase activities would constitute excellent drug targets in *B. anthracis* by simultaneously affecting its resistance to lysozyme and to phagocytosis impairing *B. anthracis* survival in the host.

Introduction

BACILLUS CEREUS group comprises, among others, three well-known species, *Bacillus anthracis*, *Bacillus thuringiensis*, and *Bacillus cereus sensu stricto*. *B. anthracis* is pathogenic for mammals, including man, eliciting anthrax, *B. thuringiensis* is an entomopathogen, and *B. cereus* is a ubiquitous soil bacterium, some strains being opportunistic pathogens, causing gastrointestinal and nongastrointestinal infections.^{25,31} On genetic basis, all three are the same species.²⁴ Some, but not all strains, harbor virulence plasmids, which specify the pathogenic phenotypes.^{19,26} *B. thuringiensis* strains possess plasmids responsible for the toxin Cry production, *B. cereus sensu stricto* may harbor toxin synthetic operon or pXO1- and pXO2-like plasmids, and *B. anthracis* possesses pXO1 and pXO2.¹⁹ The *B. anthracis* plasmids carry the genetic

components responsible, respectively, for the production of a tripartite toxin (composed of protective antigen, edematogen factor, and lethal factor) and of a poly- γ -D-glutamate (PDGA) capsule (synthesized by CapB, CapC, CapA, and CapE and anchored by CapD).^{7,8} Tripartite toxin and the capsule are the two major *B. anthracis* virulence factors. Another difference between these *Bacillus* species lies in the regulatory networks. Indeed, a pleiotropic regulator PlcR activates many *B. cereus* and *B. thuringiensis* genes encoding surface or extracellular proteins (including virulence factors), whereas this regulator is inactivated in *B. anthracis*.^{1,26,30} Instead, another pleiotropic regulator AtxA (*atxA* is carried on pXO1) is found to regulate more than 70 genes comprising the major virulence factors of *B. anthracis*,^{4,17,23,40} (for review,^{15,18}). Finally, bicarbonate was shown to modulate the expression of an important number of genes.^{9,17,38}

¹Institut Pasteur, Unité Toxines et Pathogénie Bactérienne, Paris, France.

²Centre National de la Recherche Scientifique, URA 2172, Paris, France.

³Institut Pasteur, Unité Biologie et génétique de la paroi bactérienne, Paris, France.

⁴Institut National de la Santé et de la Recherche Médicale, Equipe Avenir, Paris, France.

⁵Department of Biology, Enzyme Biotechnology Group, University of Crete, Heraklion, Greece.

⁶Institute of Molecular Biology and Biotechnology, Heraklion, Greece.

⁷Institut de Biologie Structurale Jean-Pierre Ebel, UMR 5075 CNRS/CEA/UJF, Grenoble, France.

*Present Affiliation: EA4043, Faculté de Pharmacie, Université Paris Sud, Châtenay-Malabry, France.

†Present Affiliation: Université de Poitiers, CNRS UMR 7267, Poitiers, France.

‡Present Affiliation: INSERM U1016, Institut Cochin, Paris, France.

§These authors share senior authorship.

B. anthracis surface is central to host defenses and to bacterial survival. It is composed of, outside-in, a PDGA capsule, an S-layer, that is a bidimensional proteinic crystal, a peptidoglycan (PG) layer, and the membrane.^{14,16} The S-layers and all the SLH-harboring proteins are non-covalently anchored to the PG,^{28,29} whereas LPXTG proteins are covalently anchored by three sortases (encoded by *srt* genes) to the PG.^{2,11,20} These proteins are potentially involved in virulence.⁴² Finally, the PDGA filaments (capsule constituents) are directly and covalently linked to the PG.⁷ In fact, a preparation of PDGA covalently linked to PG affords protection against anthrax.⁶ PG is therefore a key element of *B. anthracis* surface and virulence.

Despite the central role of the PG layer in organizing the surface structure of *B. anthracis*, there are few studies addressing its fine structure. The *B. cereus* RSVF1 was considered by Severin *et al.* to be a *B. anthracis* cured of its virulence plasmids and, therefore, the *B. cereus* RSVF1 PG composition was analyzed as a surrogate.³⁷ The *Bacillus* PG belongs to the A1 γ , meaning that peptidic parts are directly linked between the positions 3 and 4 containing the *meso* diaminopemilic acid (*meso*DAP).^{36,37} However, in the absence of the covalently anchored capsule, the study does not reflect the exact fine structure of *B. anthracis* PG. In fact, the PDGA capsule is directly anchored by the gamma-glutamyl transpeptidase (GGT) CapD to the PG.^{5,7} It has been shown *in vitro* that CapD can anchor the PDGA to *meso*DAP residues with a free ϵ -amino group,³⁵ although direct *in vivo* evidence is still missing.

In addition, polysaccharide polymers covalently linked through phosphodiester linkage to *B. anthracis* PG consist of $\rightarrow 6$ - α -GlcNAc-(1 \rightarrow 4)- β -ManNAc-(1 \rightarrow 4)- β -GlcNAc-(1 \rightarrow in which the α -GlcNAc residue is substituted with α -galactose and β -galactose at O-3 and O-4, respectively, and the β -GlcNAc substituted with α -galactose at O-3.¹⁰ This neutral polysaccharide is the anchoring site of SLH-containing proteins.^{28,29} Finally, it has been proposed that glucosamine residues are in majority *N*-deacetylated.^{37,43} This suggestion was reinforced by the fact that *B. cereus* and *B. anthracis* possess ten GlcNAc *N*-deacetylases of which five belong to the GlcNAc PG *N*-deacetylase subfamily.³⁴ Recently, Balomenou *et al.* have shown that of these five GlcNAc *N*-deacetylases, three have the PG as substrate and two act on the neutral polysaccharide.³ Among the GlcNAc *N*-deacetylases modifying the PG, BA1977 is involved in resistance to host lysozyme, whereas BA1961 and BA3679 contribute to the PG biogenesis.

Here, we report the analysis of the fine structure of the *B. anthracis* PG in an encapsulated strain and show that it is similar to that in an isogenic mutant where the PDGA is not synthesized and to that in all sortase mutant strains. We studied the anchoring site of the capsule and we provide evidence for the role of two GlcNAc *N*-deacetylases in modulating the anchoring of the capsule to the surface of *B. anthracis*. Our data suggest that targeting these activities would not only affect bacterial cell shape,³ but also impair capsule anchoring or possibly synthesis, affecting its anti-phagocytic role.

Results

PG composition and structure

Despite the central role in virulence of the PDGA capsule, there is no direct evidence on its precise site of *in vivo* an-

choring to the PG. To address this issue, we attempted to characterize the fine structure of the PG of *B. anthracis* in the presence and in the absence of the capsule. First, to get rid of capsule and yet grow cells in physiological conditions, a *capB* mutant (RTC10) was used to analyze the PG composition and structure. *B. anthracis* RTC10 was grown in the presence of bicarbonate at 37°C to mimic the environmental conditions found in the host and PG was purified thereafter.

After PG purification, a first global amino acid analysis was done to verify the amino acids contained in *B. anthracis* PG. Only alanine, glutamate, and *meso*DAP were found confirming the global composition of amino acid classically found in *Bacillus* PG. PG was then hydrolyzed with mutanolysin; muropeptides were purified and analyzed by mass spectrometry. An average of 35% of muropeptides were in monomer form (Fig. 1, peaks 1 to 3). Other muropeptides were dimers (55%) and trimers (10%). These percentages defined the cross-linkage of the wall at approximately 32%. Although this cross-linkage is high, no tetramers or higher multimers were found. All peaks corresponded to one muropeptide, except for the peak 9 that contained two muropeptides separated after desalting (Fig. 1 and Table 1). Monomers were composed of tripeptides (peak 1, 55%), tetrapeptides (peak 2, 34%), and pentapeptides (peak 3, 11%). No dipeptides were detected. Dimers were composed of tetra-tripeptides (peaks 4 to 6, 24.5%), tetra-tetrapeptides (peaks 7 to 9, 18.5%), and penta-tetrapeptide (peak 7 and 10, 3.5%). Two unusual muropeptides were found in minority in peaks 9 and 12. After mass spectrometry analysis, the corresponding mass was found to be respectively a penta-tetrapeptide and a tetra-tetrapeptide minus 14 daltons. It has been described in some bacteria that glycine can replace the terminal alanine.³⁶ The difference between alanine and glycine is 14 daltons. These peaks were therefore assumed to be a tetra-glycine-tetrapeptide (peak 9, 2%) and tri-glycine-tetrapeptide (peak 12, 2.5%). This result was confirmed by MS/MS spectrometry (data not shown). The peptidic portion of PG was not modified by amidation. In contrast, the GlcNAc was vastly deacetylated (92%) as described previously by Zipperle *et al.*⁴³ Indeed, all monomers were deacetylated (Table 1). All dimers were di-deacetylated except for a minority of tri-tetrapeptide, tetra-tetrapeptide, and penta-tetrapeptide that were found under a mono-acetylated form.

As differences of regulation occur with or without bicarbonate, we decided to analyze *B. anthracis* PG from RTC10 grown in the absence of bicarbonate. The muropeptide profiles of PG purified after culture with or without bicarbonate were identical (data not shown).

LPXTG proteins, for the most, have no known function, but, because of their localization, they may have, directly or not, an impact on PG maturation. Consequently, we assessed their role in PG composition by analyzing it in each of the three sortase mutant strains grown in the presence of bicarbonate. All muropeptide profiles analyzed were identical (Fig. 2). This result suggests that LPXTG proteins have no impact on PG composition.

PG composition and structure in the presence of anchored PDGA

To analyze whether the presence of PDGA disturbs the PG composition and structure, we extracted PG from encapsulated RPG1 strain grown in the presence of bicarbonate. As shown

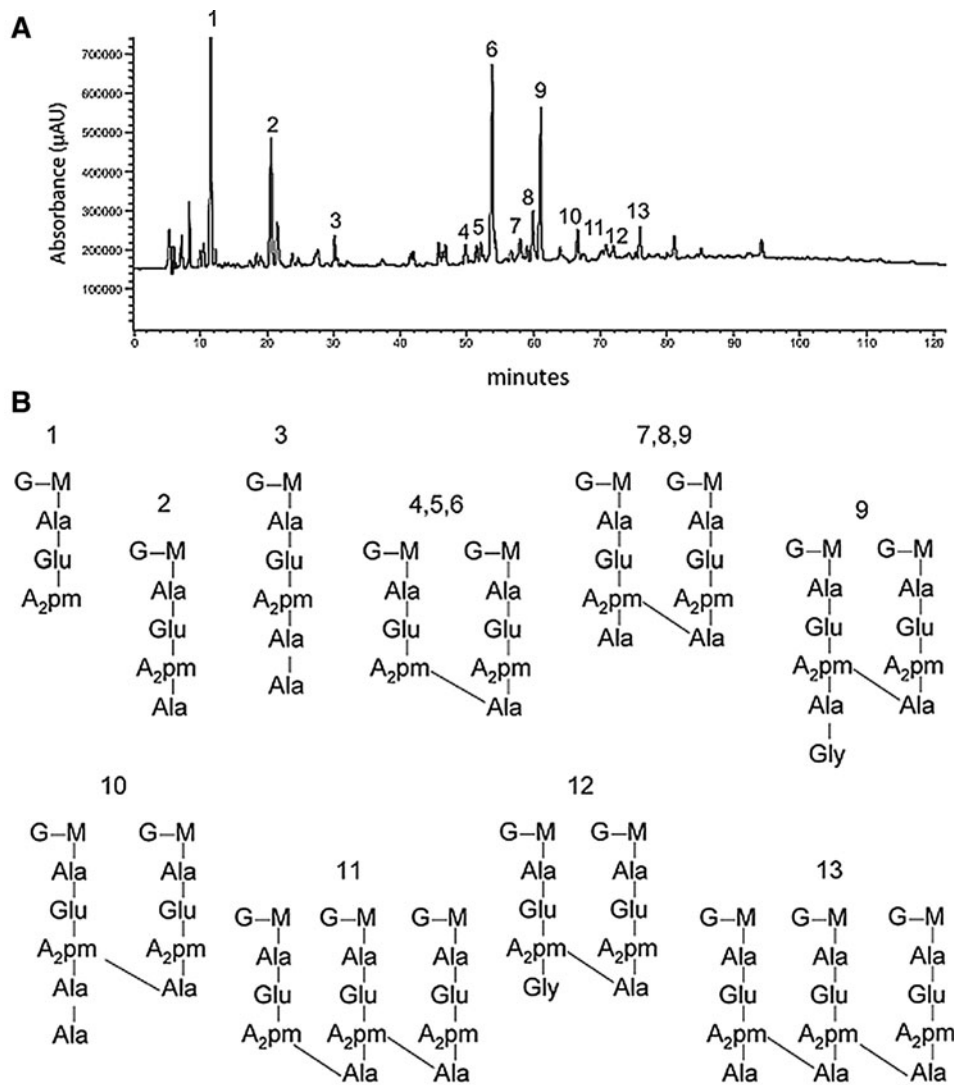


FIG. 1. Muropeptide composition of *Bacillus anthracis* RCT10 ($\Delta capB$) mutant strain. The PG was digested with mutanolysin, reduced with sodium borohydride and separated by reverse-phase high-performance liquid chromatography using a hypersyl ODS18 column (A). The muropeptides were collected, desalted, and analyzed by MALDI-TOF and MALDI-MS/MS (Table 1). The assignment of the different peaks structures are presented in (B). G and M stand for GlcNAc (or glucosamine) and MurNAc, respectively. Ala, Gly A₂pm stand for alanine, glutamate, and *meso*DAP, respectively. Note that 1 volt corresponds to 1 absorbance unit at 206 nm.

previously, PDGA was found at this step linked to PG.⁷ PDGA presence was therefore tested after elution of each peak by dot-blots with antibodies specifically directed against PDGA, as previously described.⁷ PDGA was found to elute before 10 minutes (data not shown) with salts and highly charged molecules. Analysis of the muropeptide profile indicated that there were no differences between this PG and that extracted from the *capB* mutant strain (Fig. 2), indicating that PDGA anchoring did not modify the global PG composition and structure. Due to technical difficulties for PG analysis by mass spectrometry in the presence of salts, we were unable to determine the exact PDGA anchoring site to PG.

PDGA anchoring site

Since the fine structure analysis of the PG by high-performance liquid chromatography (HPLC) did not yield

information on the nature of the anchoring site of the capsule to the PG, we decided to study the structural environment of the capsule to the PG by NMR. The direct and covalent anchoring of the capsule to the PG is predicted to affect the chemical shift of the neighboring residues. For example, based on the work of Richter *et al.*,³⁵ we anticipated observing changes in the environment of *meso*DAP residues in the presence or absence of the capsule. Bacteria were grown in conditions such that macromolecules, including PG and PDGA, were labeled with ¹³C and ¹⁵N and the PG was purified from the parental RPG1 strain and RTC10, its isogenic *capB* derived strain. We analyzed the NMR spectra using 2D-TOCSY. In the proton–nitrogen and proton–proton correlation spectra (Fig. 3A, B, respectively), comparison of the capsulated and noncapsulated strain was readily observed for the PGDA (asterisk). In the NH region, the two peaks corresponding to backbone amide and the lateral amide can be assigned to the

TABLE 1. COMPOSITION AND DEGREE OF *N*-DEACETYLATION OF THE MUROPEPTIDES OF *BACILLUS ANTHRACIS*

Peak	Percentage of total UV	Muropeptide structure	Molecular mass		Degree of acetylation
			Theoretical	Experimental	
1	19.59	Tripeptide	851.35	851.37	Deacetylate
2	12.05	Tetrapeptide	922.39	922.35	Deacetylate
3	3.81	Pentapeptide	993.42	993.43	Deacetylate
4	2.95	Tetra-tripeptide	1732.74	1732.73	Di-deacetylate
5	1.33	Tetra-tripeptide	1774.74	1774.73	Mono-deacetylate
6	20.39	Tetra-tripeptide	1732.74	1732.75	Di-deacetylate
7	6.73	Tetra-tetrapeptide	1845.78	1845.73	Mono-deacetylate
	Traces	Penta-tetrapeptide	1916.82	1917.01	Mono-deacetylate
8	3.55	Tetra-tetrapeptide	1803.77	1803.79	Di-deacetylate
9	11.47	Tetra-tetrapeptide	1803.77	1803.73	Di-deacetylate
	2.27	Tetra-Gly-tetrapeptide	1860.82	1860.74	Di-deacetylate
10	3.60	Penta-tetrapeptide	1874.81	1874.81	Di-deacetylate
11	6.53	Tetra-tetra-tripeptide	2614.12	2615.15	Tri-deacetylate
12	2.49	Tetra-tri-Gly-peptide	1789.79	1790.78	Di-deacetylate
13	3.24	Tetra-tetra-tetrapeptide	2685.16	2686.17	Tri-deacetylate

*meso*DAP residues. No difference could be observed between the capsulated and noncapsulated strain. In the proton-carbon correlation spectra (Fig. 3C), we observed in the region corresponding to the anomeric protons of the sugars a clear change in the chemical shift between capsulated and noncapsulated strain, suggesting that the presence of the PDGA was changing the chemical environment of the sugar backbone. Anchoring of the PGDA to the PG layer is performed by CapD, a GGT.^{7,35} This requires a free amine group on the PG layer. Our NMR data suggest that the capsule is anchored to the glycan backbone of the PG layer. The glycan backbone is composed of repeating units of the

N-GlcNAc β -1,4 linked to N-acetylmuramic acid (MurNAc). The glycan backbone has been shown by others and this work to be extensively *N*-deacetylated (Table 1) at the GlcNAc residues freeing the amine group at C2 of the GlcNAc.

Previously, we have shown that *N*-deacetylation of the PG of *B. anthracis* is performed by at least three distinct *N*-deacetylases, BA1961, BA1977, and BA3679.³ Given our NMR data, we tested whether the *N*-deacetylase mutants could be involved in the anchoring of the PDGA capsule to the PG. We grew the different strains (parental and the single mutant strains) in the presence of bicarbonate at

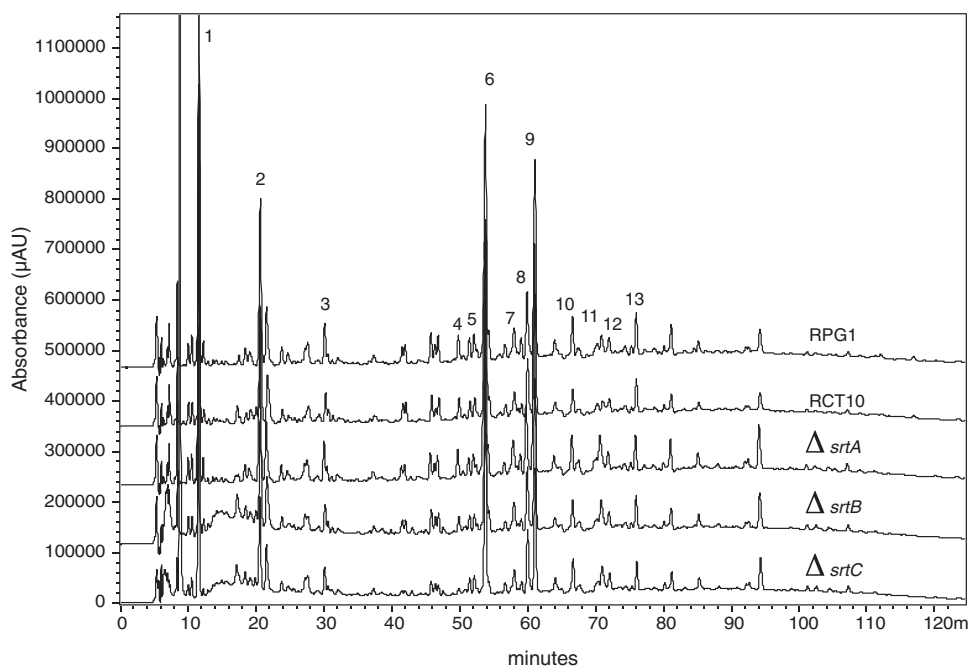


FIG. 2. Muropeptide profile of different *B. anthracis* mutants. The muropeptide profile of the parental strain RPG1 was compared to its isogenic mutants RCT10 ($\Delta capB$), RSBON30 ($\Delta srtA$), RSBTR30 ($\Delta srtB$), and RSBTO30 ($\Delta srtC$). The mutants produced muropeptide profiles similar to those of the parental strain. The peak numbers correspond to the peak nomenclature of Figure 1. Note that 1 volt corresponds to 1 absorbance unit at 206 nm.

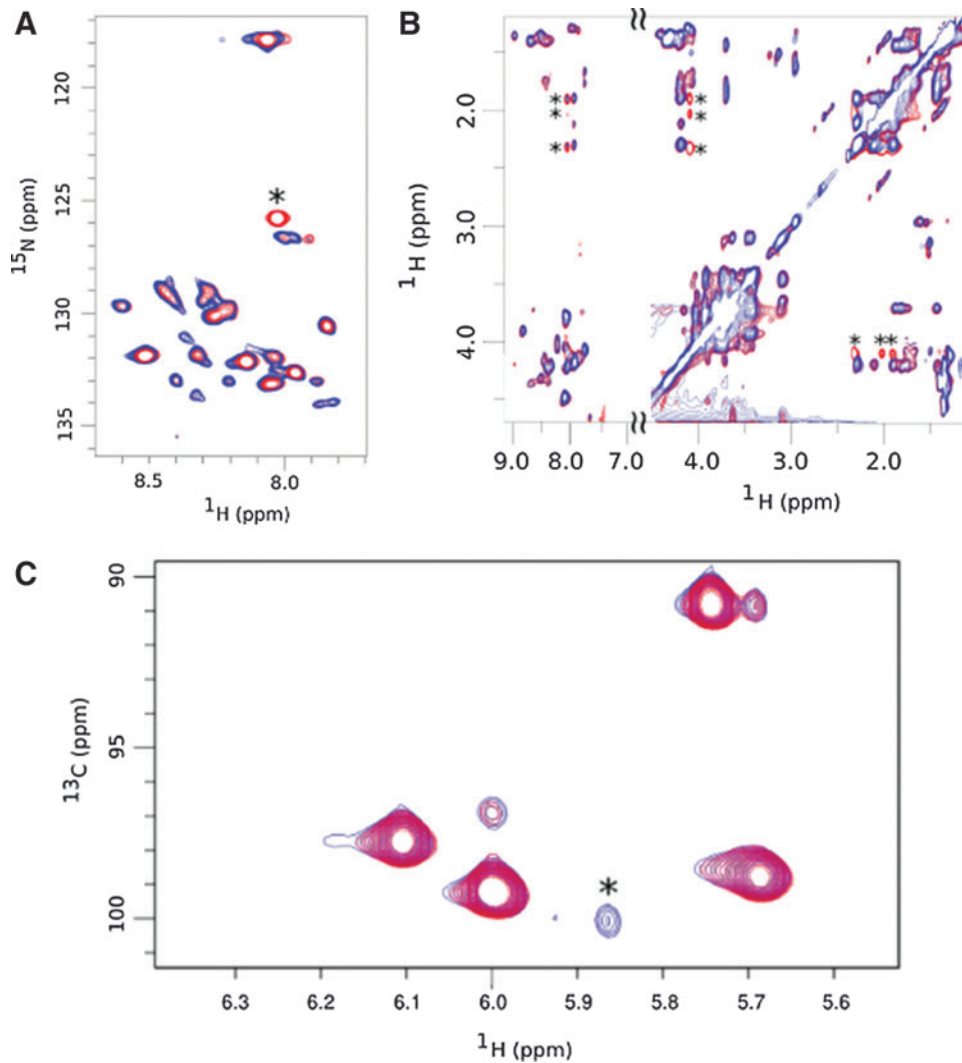


FIG. 3. Comparison of peptidoglycan and polyglutamate linked peptidoglycan using NMR (A) ^{15}N - ^1H correlation recorded on muropeptide prepared from digestion of the cell wall of the RPG1 strain (red) and the RTC10 mutant (blue). The amide correlation of the polyglutamate is indicated by a star. (B) ^1H - ^1H TOCSY experiments carried out with the PG from the RPG1 strain (red) and the RTC10 mutant (blue) in the same conditions. Extra correlation peaks obtained for the RPG1 strain can be assigned to the H_N , CH_α , $\text{CH}_2\beta$, and $\text{CH}_2\gamma$ glutamate resonances and are indicated by stars. (C) Difference observed for the sugar in the ^{13}C - ^1H correlation recorded on the RPG1 and RTC10 peptidoglycans. Region of the ^{13}C - ^1H correlation recorded on muropeptide prepared from digestion of the cell wall of the RPG1 strain (red) and the RTC10 mutant (blue) in the same conditions. ^1H - ^{13}C anomeric correlation only present in the RTC10 mutant is indicated by an asterisk.

37°C to mimic the environmental conditions that induce the synthesis of the capsule. The presence of the capsule was visualized by staining the bacteria with India ink (Fig. 4). Both the parental RPG1 strain and the $\text{R}\Delta\text{ba}2944$ mutant strain, which was shown to be involved in modification of the neutral polysaccharide and used as a control, displayed capsule surrounding homogeneously the bacilli (Fig. 4A, B). $\text{R}\Delta\text{ba}1977$, $\text{R}\Delta\text{ba}1961$, and $\text{R}\Delta\text{ba}3679$, all three harboring a modified PG, also produced a capsule. However, $\text{R}\Delta\text{ba}1961$ and $\text{R}\Delta\text{ba}3679$, both known to be impaired in the biogenesis of the PG, produced cells with a heterogeneous distribution of PDGA on the surface (Fig. 4D, E), while $\text{R}\Delta\text{ba}1977$, which is sensitive to lysozyme, behaved like the parental strain (Fig. 4C). These results suggest that both $\text{R}\Delta\text{ba}1961$ and $\text{R}\Delta\text{ba}3679$ are impaired

in PDGA anchoring to the cell surface of *B. anthracis* and/or in its synthesis.

Discussion

Despite the importance of *B. cereus sensu lato* species, and, in particular, of *B. anthracis* as a pathogen, few studies have addressed the fine structure of the major cell wall component of this bacterium, the PG. A pioneering study by Zipperle⁴³ showed that the global composition was similar to the one found in the *Bacillus* group. The PG of the Sterne strain (also known as strain 7702) was characterized by a high degree of *N*-deacetylation at both the GlcNAc (88%) and the MurNAc (34%) and by a low degree of cross-linking. However, this study used crude and indirect methods to probe

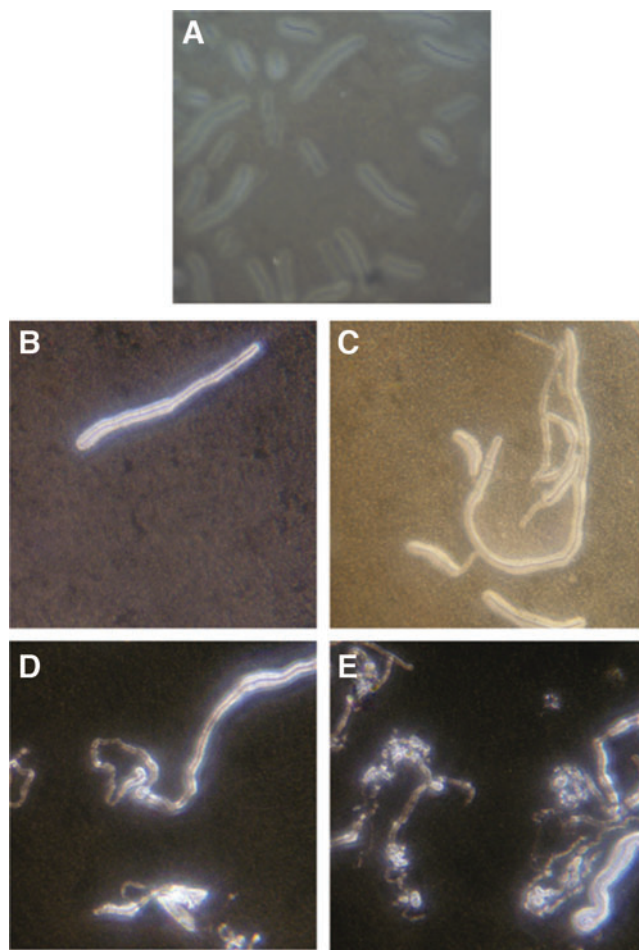


FIG. 4. Visualization of the PDGA capsule by India ink staining. *B. anthracis* bacilli grown in the presence of bicarbonate were observed in the presence of India ink at the same magnification. RPG1 (A), R Δ ba2944 (B), and R Δ ba1977 (C) harbored a capsule, whereas R Δ ba1961 (D) and R Δ ba3679 (E) strains display heterogeneous and discontinuous capsule.

the level of cross-linking and *N*-deacetylation. Furthermore, the Sterne strain does not carry the pXO2 virulence plasmid encoding the capsule biosynthetic operon.

More recently, Severin *et al.* reported the fine structure of the PG of *B. cereus* RSVF1³⁷ arguing that this strain could serve as a surrogate for *B. anthracis*. The HPLC and mass spectrometry analysis of the mucopeptides of strain RSVF1 confirmed the high level of *N*-deacetylation of the PG. Furthermore, the authors observed a high degree of amidation of the stem peptide. A major limitation of this work was the choice of the strain. Indeed, although closely related to the clonal *B. anthracis*, strain RSVF1 does not belong to the same lineage and does not carry the two virulence plasmids pXO1 and pXO2.

Thus, we determined the structure of the PG of the virulent *B. anthracis* strain RPG1. Our results showed significant differences with both previous studies. First, we observed *N*-deacetylation exclusively of the GlcNAc residues (and none of the MurNAc) and the levels were not identical to those previously described. Second, we did not observe any amidation of the stem peptide in contrast to the

Severin study.³⁷ Third, we observed a high degree of cross-linking compared with the Zipperle study.⁴⁵ Fourth, we isolated mucopeptides indicative of glycine presence into the stem peptide. These three studies provide common features of the PG of *B. anthracis* and *B. cereus* such as the high degree of *N*-deacetylation of the GlcNAc conferring high resistance to lysozyme. They also highlight that despite the phylogenetic relationship between these species, there are strain-dependent variations in the PG composition in the *B. cereus* group, warranting a wider study of the PG composition of strains representing the diversity of the *B. cereus* group. For example, we have recently published the mucopeptide profile of strain 7702.³ Comparison between 7702³ and RPG1 (Fig. 2 and data not shown for growth without bicarbonate) indicates that the global composition is similar (similar cross-linking and similar *N*-deacetylation). However, strain 7702 has more mucopeptides with tetrapeptides while RPG1 has more of the tripeptides. These differences could be attributed to the presence of pXO2 in RPG1. Interestingly, the monomer GM-tripeptide is the preferred Nod1 ligand.²² Thus, many of these variations could be under selective pressure such as the immune system of their natural hosts (insects for *B. thuringiensis* and mammals for *B. anthracis*).

Next, we attempted to structurally characterize the anchoring site of PDGA to *B. anthracis* PG. The previous work by Richter *et al.* proposed PDGA to be anchored to the *meso*DAP residues of the stem peptides.³⁵ However, these experiments were done *in vitro* using small PDGA filaments, which may change the substrate preference. Currently, there is no direct evidence on the preferred anchoring site of PGDA *in vivo*. Serological detection of the PDGA along the entire HPLC profile of *B. anthracis* mucopeptides indicated it eluted with the flow-through fraction containing the salts precluding any possible MALDI-TOF and MS/MS analysis. CapD as a GGT cleaves the PDGA and transfers it, either to H₂O leading to hydrolysis, or to an acceptor molecule leading to a transpeptidation. According to Richter and collaborators, CapD is able to act as an endopeptidase cleaving PDGA into two PDGA filaments.³⁵ It is noteworthy that classical GGTs transfer only a glutamyl while CapD transfers a filament of PDGA.³² During this reaction CapD forms an acyl-intermediate with PDGA as already described for GGTs. Richter *et al.* showed that *in vitro* CapD can transfer a cleaved PDGA molecule onto the *meso*DAP of *B. anthracis* PG.³⁵ However, the acceptor group may also be the free amine of *N*-deacetylated GlcNAc residues. Thus, we attempted to characterize PDGA anchoring to the PG by directly purifying PDGA-harboring PG from the bacilli and using NMR analysis. Surprisingly, no impact on the *meso*-DAP due to the PDGA presence was noticed. Instead, chemical shifts corresponding to the sugar backbone were observed. Our results suggest that *in vivo* CapD covalently anchors the PDGA filaments to the glucosamine of the *B. anthracis* PG rather than on the *meso*DAP as observed *in vitro*. The transfer on *meso*DAP may also exist *in vivo* albeit with a frequency such that it was not observed in our analysis. To further support this conclusion, we show that two of the PG *N*-deacetylases, BA1961 and BA3679, are involved in the anchoring of PGDA to the *B. anthracis* cell surface. Thus, BA1961 and BA3679 would generate free amino groups by *N*-deacetylating the GlcNAc residues

creating the site on the PG on which CapD anchors PDGA. This is reminiscent of their role in modifying the PG of *B. anthracis* spores.³ In the absence of both activities, the PG of the spores is no longer GlcNAc *N*-deacetylated precluding the sequential action of the amidase CwID and of the MurNac *N*-deacetylase PdaA required for the formation of the δ -lactam muramic acid. Alternatively, our results cannot exclude that due to the cell shape defect in BA1691 and BA3679 mutants, nonmodified PG might impact on the whole cell wall machinery including the PDGA synthetic machinery through sensing mechanisms such as the WalKR two-component system.¹³ We observed a heterogeneous distribution of the PDGA in the *N*-deacetylase mutants clearly distinct from a *capD* phenotype⁷ suggesting that PG *N*-deacetylation probably interferes with the site of PDGA anchoring and eventually of its synthesis.

In conclusion, *N*-deacetylases are widely distributed in bacteria and contribute to pathogens virulence by escaping the host innate immunity. Thus, strategies aiming these activities would have a dramatic impact on *B. anthracis* survival by simultaneously targeting mechanisms of resistance to lysozyme and to phagocytosis.

Materials and Methods

Strains and growth conditions

Escherichia coli HB101 harboring pRK24 was used for mating experiments.³⁹ *B. anthracis* RPG1 strain was used for the study.²¹ This strain possesses both virulence plasmids pXO1 and pXO2; however, because of point mutations in *cya* and *lef*, encoding the edematogen and lethal factors, respectively, nonfunctional toxins are produced. The *capB* mutant strain (RTC10) derives from the RPG1 strain.⁸ The strains R Δ ba1961, R Δ ba1977, R Δ ba2929, and R Δ ba3679 are deleted in *ba1961*, *ba1977*, *ba2929*, and *ba3679* encoding *N*-deacetylases.³

The *srt* mutants were constructed in the RPG1 background using recombinant plasmids previously described, namely pSON30, pSTR30, and pSTO30,¹¹ to yield RSBON30 (RPG1 Δ srtA), RSBTR30 (RPG1 Δ srtB), and RSBTO30 (RPG1 Δ srtC). Recombinant plasmids were transferred from *E. coli* to *B. anthracis* by heterogramic conjugation.³⁹ Allelic exchange was carried out as described previously.³³

B. anthracis was grown in BHI (Difco) medium without or with addition of sodium bicarbonate (0.6%).

Labeling PG with ¹⁵N and ¹³C was carried out as described previously.²⁷ We grew *E. coli* up to stationary phase in minimal M9 medium in which we replaced the normal glucose and NH₄Cl by ¹³C-glucose and ¹⁵NH₄Cl, respectively. Bacteria were harvested by centrifugation, resuspended in 15 ml of Tris-HCl pH 7.5 25 mM and NaCl 150 mM, and sonicated. The lysate was treated with DNaseI and RNaseA for 1 hour at 37°C followed by proteinase K overnight at 37°C. Remaining cellular debris were removed by centrifugation, the soluble lysate was autoclaved 15 minutes at 105°C and lyophilized. *B. anthracis* was then grown in a R-bic-like medium composed of 50 mM potassium phosphate buffer, ¹⁵NH₄Cl (0.6 g/L), ¹³C-glucose (0.25%), thiamine (1 g/L), MgSO₄ (17.5 mg/L), MnSO₄ (0.9 mg/L), CaCl₂ (7.5 mg/L), *E. coli* lysate extracts (0.5%), and sodium bicarbonate (0.6%). Bacterial cells grown under

these conditions were harvested to prepare the labeled PG and PGDA used for the NMR analysis.

Capsule visualization

B. anthracis capsule was visualized using India ink as previously described.⁷

PG extraction and analysis

PG was extracted as described previously from 200 ml stationary phase cultures.⁷ PG was digested with mutanolysin treatment (50 μ g/ml) and further reduced with sodium borohydride. Muropeptide were then separated on phase reverse Hypersil ODS18 column (250 by 4.6 mm, 3 μ m particular size) with 0–15% methanol gradient and 4.3–5 pH sodium phosphate gradient. Chromatograms were obtained at λ = 206 nm. Separated muropeptides were desalted on the same column, but with 0.05% trifluoroic acid with a 0–25% acetonitrile gradient. They were finally analyzed by mass spectrometry with a Voyager DE-STR MALDI-TOF from the Proteomics platform at Institut Pasteur. Amino acid analysis was performed by “unité de Chimie Organique” at the Institut Pasteur, using the ninhydrin technique and a Beckman 6300 analyzer.

All NMR data were collected at 25°C in the same conditions on two muropeptide samples obtained by digestion of the ¹³C, ¹⁵N-labeled cell wall of the RPG1 and the RTC10 *B. anthracis* strains. The sample was dissolved in 100 mM sodium phosphate buffer, pH 6.5 containing 10% D₂O. Spectra were recorded on Agilent spectrometers equipped with cryogenic triple ¹H, ¹³C, ¹⁵N resonance probes operating at 600 MHz ¹H NMR frequencies. TOCSY experiments were performed with a DIPSI mixing time of 70 ms and an experimental time of 6 hours. ¹⁵N-¹H and ¹³C-¹H Sensitivity enhanced HSQC were recorded with an experimental time of 15 minutes and 2 hours, respectively. NMR data were processed with NMRPipe¹² and analyzed using the CcpNmr Analysis 2.2 software.⁴¹

Acknowledgments

The Proteomics Plateform and Unité de Chimie Organique from Institut Pasteur are thanked for MS and amino acids analysis. TC was funded by Caisse Nationale d'Assurance Maladie des nonsalariés (CANAM). SB was supported by a short-term EMBO fellowship. Work in IGB laboratory was supported by an ERC starting Grant (PGNfromSHAPEtoVIR 202283). The work of SB and VB was co-financed by EU (ERDF) and Greek funds through the “THALIS” program. We thank Michèle Mock and Agnès Labigne, in whose laboratories part of this work was carried out. Catherine Chaput is also thanked for her help with the HPLC manipulation.

Disclosure Statement

No competing financial interests exist.

References

1. Agaisse, H., M. Gominet, O.A. Okstad, A.B. Kolsto, and D. Lereclus. 1999. PlcR is a pleiotropic regulator of

- extracellular virulence factor gene expression in *Bacillus thuringiensis*. *Mol. Microbiol.* **32**:1043–1053.
2. **Aucher, W., S. Davison, and A. Fouet.** 2011. Characterization of the Sortase Repertoire in *Bacillus anthracis*. *PLoS One* **6**:e27411.
 3. **Balomenou, S., A. Fouet, M. Tzanodaskalaki, E. Couture-Tosi, V. Bouriotis, and I.G. Boneca.** 2013. Distinct functions of polysaccharide deacetylases in cell shape, neutral polysaccharide synthesis and virulence of *Bacillus anthracis*. *Mol. Microbiol.* **87**:867–883.
 4. **Bourgogne, A., M. Drysdale, S.G. Hilsenbeck, S.N. Peterson, and T.M. Koehler.** 2003. Global effects of virulence gene regulators in a *Bacillus anthracis* strain with both virulence plasmids. *Infect. Immun.* **71**:2736–2743.
 5. **Candela, T.** 2012. CapD Poly- γ -glutamate Hydrolase/Transpeptidase. In: Rawlings and Salvesen (ed.), *Handbook of Proteolytic Enzymes*, 3rd Edition. Elsevier, United Kingdom, pp. 3719–3722.
 6. **Candela, T., F. Dumetz, E. Tosi-Couture, M. Mock, P.L. Goossens, and A. Fouet.** 2012. Cell-wall preparation containing poly- γ -D-glutamate covalently linked to peptidoglycan, a straightforward extractable molecule, protects mice against experimental anthrax infection. *Vaccine* **31**:171–175.
 7. **Candela, T., and A. Fouet.** 2005. *Bacillus anthracis* CapD, belonging to the gamma-glutamyltranspeptidase family, is required for the covalent anchoring of capsule to peptidoglycan. *Mol. Microbiol.* **57**:717–726.
 8. **Candela, T., M. Mock, and A. Fouet.** 2005. CapE, a 47-amino-acid peptide, is necessary for *Bacillus anthracis* polyglutamate capsule synthesis. *J. Bacteriol.* **187**:7765–7772.
 9. **Chitlaru, T., O. Gat, Y. Gozlan, N. Ariel, and A. Shaf-ferman.** 2006. Differential proteomic analysis of the *Bacillus anthracis* secretome: distinct plasmid and chromosome CO₂-dependent cross talk mechanisms modulate extracellular proteolytic activities. *J. Bacteriol.* **188**:3551–3571.
 10. **Choudhury, B., C. Loeff, E. Saile, P. Wilkins, C.P. Quinn, E.L. Kannenberg, and R.W. Carlson.** 2006. The structure of the major cell wall polysaccharide of *Bacillus anthracis* is species-specific. *J. Biol. Chem.* **281**:27932–27941.
 11. **Davison, S., E. Couture-Tosi, T. Candela, M. Mock, and A. Fouet.** 2005. Identification of the *Bacillus anthracis* (gamma) phage receptor. *J. Bacteriol.* **187**:6742–6749.
 12. **Delaglio, F., S. Grzesiek, G.W. Vuister, G. Zhu, J. Pfeifer, and A. Bax.** 1995. NMRPipe: a multidimensional spectral processing system based on UNIX pipes. *J. Biomol. NMR* **6**:277–293.
 13. **Dubrac, S., P. Bisicchia, K.M. Devine, and T. Msadek.** 2008. A matter of life and death: cell wall homeostasis and the WalKR (YycGF) essential signal transduction pathway. *Mol. Microbiol.* **70**:1307–1322.
 14. **Fouet, A.** 2009. The surface of *Bacillus anthracis*. *Mol. Aspects Med.* **30**:374–385.
 15. **Fouet, A.** 2010. AtxA, a *Bacillus anthracis* global virulence regulator. *Res. Microbiol.* **161**:735–742.
 16. **Fouet, A., and S. Mesnage.** 2002. *Bacillus anthracis* cell envelope components. *Curr. Top. Microbiol. Immunol.* **271**:87–113.
 17. **Fouet, A., and M. Mock.** 1996. Differential influence of the two *Bacillus anthracis* plasmids on regulation of virulence gene expression. *Infect. Immun.* **64**:4928–4932.
 18. **Fouet, A., and M. Mock.** 2006. Regulatory networks for virulence and persistence of *Bacillus anthracis*. *Curr. Opin. Microbiol.* **9**:160–166.
 19. **Fouet, A., and M. Moya.** 2008. Virulence Megaplasmids in *Bacillus anthracis* and their relatives in the *Bacillus cereus* group. In: E. Schwartz (ed.), *Microbial Megaplasmids*. Springer, Münster, pp. 187–206.
 20. **Gaspar, A.H., L.A. Marraffini, E.M. Glass, K.L. Debord, H. Ton-That, and O. Schneewind.** 2005. *Bacillus anthracis* sortase A (SrtA) anchors LPXTG motif-containing surface proteins to the cell wall envelope. *J. Bacteriol.* **187**:4646–4655.
 21. **Gimenez, A.P., Y.Z. Wu, M. Paya, C. Delclaux, L. Touqui, and P.L. Goossens.** 2004. High bactericidal efficiency of type iia phospholipase A2 against *Bacillus anthracis* and inhibition of its secretion by the lethal toxin. *J. Immunol.* **173**:521–530.
 22. **Girardin, S.E., I.G. Boneca, L.A. Carneiro, A. Antignac, M. Jehanno, J. Viala, K. Tedin, M.K. Taha, A. Labigne, U. Zahringer, and others.** 2003. Nod1 detects a unique muropeptide from gram-negative bacterial peptidoglycan. *Science* **300**:1584–1587.
 23. **Guignot, J., M. Mock, and A. Fouet.** 1997. AtxA activates the transcription of genes harbored by both *Bacillus anthracis* virulence plasmids. *FEMS Microbiol. Lett.* **147**:203–207.
 24. **Helgason, E., O.A. Okstad, D.A. Caugant, H.A. Johansen, A. Fouet, M. Mock, I. Hegna, and A.B. Kolsto.** 2000. *Bacillus anthracis*, *Bacillus cereus*, and *Bacillus thuringiensis*—one species on the basis of genetic evidence. *Appl. Environ. Microbiol.* **66**:2627–2630.
 25. **Jensen, G.B., B.M. Hansen, J. Eilenberg, and J. Mahillon.** 2003. The hidden lifestyles of *Bacillus cereus* and relatives. *Environ. Microbiol.* **5**:631–640.
 26. **Kolsto, A.B., N.J. Tourasse, and O.A. Okstad.** 2009. What sets *Bacillus anthracis* apart from other *Bacillus* species? *Annu. Rev. Microbiol.* **63**:451–476.
 27. **Lecoq, L., C. Bougault, T. Kern, J.E. Hugonnet, C. Veckerle, O. Pessey, M. Arthur, and J.P. Simorre.** 2012. Backbone and side-chain 1H, 15N and 13C assignment of apo- and imipenem-acylated L,D-transpeptidase from *Bacillus subtilis*. *Biomol. NMR Assign.* **6**:205–208.
 28. **Mesnage, S., T. Fontaine, T. Mignot, M. Delepierre, M. Mock, and A. Fouet.** 2000. Bacterial SLH domain proteins are non-covalently anchored to the cell surface via a conserved mechanism involving wall polysaccharide pyruvylation. *EMBO J.* **19**:4473–4484.
 29. **Mesnage, S., E. Tosi-Couture, and A. Fouet.** 1999. Production and cell surface anchoring of functional fusions between the SLH motifs of the *Bacillus anthracis* S-layer proteins and the *Bacillus subtilis* levansucrase. *Mol. Microbiol.* **31**:927–936.
 30. **Mignot, T., M. Mock, D. Robichon, A. Landier, D. Lereclus, and A. Fouet.** 2001. The incompatibility between the PlcR- and AtxA-controlled regulons may have selected a nonsense mutation in *Bacillus anthracis*. *Mol. Microbiol.* **42**:1189–1198.
 31. **Mock, M., and A. Fouet.** 2001. Anthrax. *Annu Rev Microbiol* **55**:647–671.
 32. **Okada, T., H. Suzuki, K. Wada, H. Kumagai, and K. Fukuyama.** 2006. Crystal structures of gamma-glutamyltranspeptidase from *Escherichia coli*, a key enzyme in glutathione metabolism, and its reaction intermediate. *Proc. Natl. Acad. Sci. U. S. A.* **103**:6471–6476.
 33. **Pezard, C., P. Berche, and M. Mock.** 1991. Contribution of individual toxin components to virulence of *Bacillus anthracis*. *Infect. Immun.* **59**:3472–3477.

34. **Psylinakis, E., I.G. Boneca, K. Mavromatis, A. Deli, E. Hayhurst, S.J. Foster, K.M. Varum, and V. Bouriotis.** 2005. Peptidoglycan N-acetylglucosamine deacetylases from *Bacillus cereus*, highly conserved proteins in *Bacillus anthracis*. *J. Biol. Chem.* **280**:30856–30863.
35. **Richter, S., V.J. Anderson, G. Garufi, L. Lu, J.M. Budzik, A. Joachimiak, C. He, O. Schneewind, and D. Missiakas.** 2009. Capsule anchoring in *Bacillus anthracis* occurs by a transpeptidation reaction that is inhibited by capsidin. *Mol. Microbiol.* **71**:404–420.
36. **Schleifer, K.H., and O. Kandler.** 1972. Peptidoglycan types of bacterial cell walls and their taxonomic implications. *Bacteriol. Rev.* **36**:407–477.
37. **Severin, A., K. Tabei, and A. Tomasz.** 2004. The structure of the cell wall peptidoglycan of *Bacillus cereus* RSVF1, a strain closely related to *Bacillus anthracis*. *Microb. Drug Resist.* **10**:77–82.
38. **Sirard, J.C., M. Mock, and A. Fouet.** 1994. The three *Bacillus anthracis* toxin genes are coordinately regulated by bicarbonate and temperature. *J. Bacteriol.* **176**:5188–5192.
39. **Trieu-Cuot, P., C. Carlier, P. Martin, and P. Courvalin.** 1987. Plasmid transfer by conjugation from *Escherichia coli* to Gram-positive bacteria. *FEMS Microbiol. Lett.* **48**:289–294.
40. **Uchida, I., S. Makino, T. Sekizaki, and N. Terakado.** 1997. Cross-talk to the genes for *Bacillus anthracis* capsule synthesis by *atxA*, the gene encoding the trans-activator of anthrax toxin synthesis. *Mol. Microbiol.* **23**:1229–1240.
41. **Vranken, W.F., W. Boucher, T.J. Stevens, R.H. Fogh, A. Pajon, M. Llinas, E.L. Ulrich, J.L. Markley, J. Ionides, and E.D. Laue.** 2005. The CCPN data model for NMR spectroscopy: development of a software pipeline. *Proteins* **59**:687–696.
42. **Xu, Y., X. Liang, Y. Chen, T.M. Koehler, and M. Hook.** 2004. Identification and biochemical characterization of two novel collagen binding MSCRAMMs of *Bacillus anthracis*. *J. Biol. Chem.* **279**:51760–51768.
43. **Zipperle, G.F., Jr., J.W. Ezzell, Jr., and R.J. Doyle.** 1984. Glucosamine substitution and muramidase susceptibility in *Bacillus anthracis*. *Can. J. Microbiol.* **30**:553–559.

Address correspondence to:

Ivo G. Boneca, PhD

Institut Pasteur

Unité Biologie et génétique de la paroi bactérienne

28 rue du Dr Roux

Paris cedex 15 75724

France

E-mail: bonecai@pasteur.fr